

## Accepted Manuscript

Review

Endoplasmic Reticulum stress signaling and the pathogenesis of Non-Alcoholic Fatty Liver Disease

Cynthia Lebeauvin, Deborah Vallée, Younis Hazari, Claudio Hetz, Eric Chevet, Béatrice Bailly-Maitre

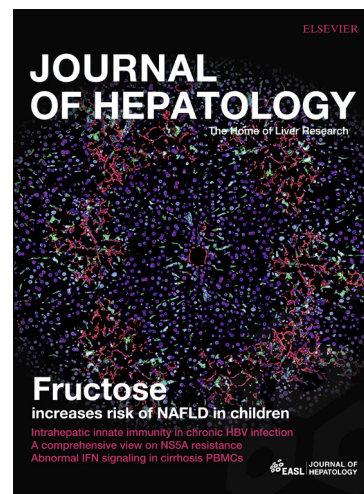
PII: S0168-8278(18)32161-5  
DOI: <https://doi.org/10.1016/j.jhep.2018.06.008>  
Reference: JHEPAT 7009

To appear in: *Journal of Hepatology*

Received Date: 12 February 2018  
Revised Date: 22 May 2018  
Accepted Date: 14 June 2018

Please cite this article as: Lebeauvin, C., Vallée, D., Hazari, Y., Hetz, C., Chevet, E., Bailly-Maitre, B., Endoplasmic Reticulum stress signaling and the pathogenesis of Non-Alcoholic Fatty Liver Disease, *Journal of Hepatology* (2018), doi: <https://doi.org/10.1016/j.jhep.2018.06.008>

This is a PDF file of an unedited manuscript that has been accepted for publication. As a service to our customers we are providing this early version of the manuscript. The manuscript will undergo copyediting, typesetting, and review of the resulting proof before it is published in its final form. Please note that during the production process errors may be discovered which could affect the content, and all legal disclaimers that apply to the journal pertain.



**Endoplasmic Reticulum stress signaling and the pathogenesis of  
Non-Alcoholic Fatty Liver Disease**

Cynthia Lebeaupin<sup>1</sup>, Deborah Vallée<sup>1</sup>, Younis Hazari<sup>2,3,4</sup>, Claudio Hetz<sup>2,3,4,5,6</sup>, Eric Chevet<sup>7,8</sup>, Béatrice Bailly-Maitre<sup>1,§</sup>.

<sup>1</sup>*Université Côte d'Azur, INSERM, U1065, C3M, 06200 Nice, France;*

<sup>2</sup>*Biomedical Neuroscience Institute (BNI), Faculty of Medicine, University of Chile, Santiago, Chile.*

<sup>3</sup>*Center for Geroscience, Brain Health and Metabolism (GERO), Santiago, Chile.*

<sup>4</sup>*Program of Cellular and Molecular Biology, Institute of Biomedical Sciences, University of Chile, Santiago, Chile.*

<sup>5</sup>*Buck Institute for Research on Aging, Novato, CA, 94945, USA*

<sup>6</sup>*Department of Immunology and Infectious diseases, Harvard School of Public Health, 02115 Boston MA, USA.*

<sup>7</sup>*"Chemistry, Oncogenesis, Stress, Signaling", Inserm U1242, Université de Rennes, Rennes, France*

<sup>8</sup>*Centre de Lutte Contre le Cancer Eugène Marquis, Rennes, France*

**CONTACT INFORMATION:**

<sup>§</sup>Address all correspondence to Dr. Bailly-Maitre, Beatrice. Bâtiment Universitaire ARCHIMED, INSERM, U1065, Team 8 "Hepatic complications in obesity", 151 route Saint Antoine de Ginestière, BP 2 3194, 06204 Nice Cedex 03, France. Email: [beatrice.bailly-maitre@unice.fr](mailto:beatrice.bailly-maitre@unice.fr) or Tel.+33(0) 489064238 or Fax. +33(0)489064221.

**RUNNING HEAD:** ER stress and NAFLD

Download English Version:

<https://daneshyari.com/en/article/10218136>

Download Persian Version:

<https://daneshyari.com/article/10218136>

[Daneshyari.com](https://daneshyari.com)