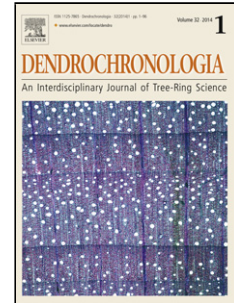


Accepted Manuscript

Title: Mixed effects of climate variation on the Scots pine forests: age and species mixture matter

Authors: Cristian Gheorghe Sidor, Michal Bosela, Ulf Büntgen, Radu Vlad



PII: S1125-7865(18)30094-8
DOI: <https://doi.org/10.1016/j.dendro.2018.09.005>
Reference: DENDRO 25540

To appear in:

Received date: 21-5-2018
Revised date: 13-9-2018
Accepted date: 13-9-2018

Please cite this article as: Sidor CG, Bosela M, Büntgen U, Vlad R, Mixed effects of climate variation on the Scots pine forests: age and species mixture matter, *Dendrochronologia* (2018), <https://doi.org/10.1016/j.dendro.2018.09.005>

This is a PDF file of an unedited manuscript that has been accepted for publication. As a service to our customers we are providing this early version of the manuscript. The manuscript will undergo copyediting, typesetting, and review of the resulting proof before it is published in its final form. Please note that during the production process errors may be discovered which could affect the content, and all legal disclaimers that apply to the journal pertain.

Mixed effects of climate variation on the Scots pine forests: age and species mixture**matter**

Cristian Gheorghe SIDOR^{1*}, Michal BOSELA^{2,3}, Ulf BÜNTGEN^{4,5,6}, Radu VLAD¹

¹Forest National Institute for Research and Development in Forestry “Marin Drăcea”,
Research Station for Norway spruce Silviculture, Calea Bucovinei 73 bis, Câmpulung
Moldovenesc, Romania

²Department of Forest Management Planning and Geodesy, Faculty of Forestry, Technical
University in Zvolen, T.G. Masaryka 24, 96053 Zvolen, Slovakia

³National Forest Centre, Forest Research Institute Zvolen, T.G. Masaryka 22, 96092 Zvolen,
Slovakia

⁴Department of Geography, University of Cambridge, Cambridge, CB2 3EN, UK

⁵Swiss Federal Research Institute, 8903 Birmensdorf, Switzerland

⁶CzechGlobe & Department of Geography, Masaryk University, 61137 Brno, Czech
Republic

*Corresponding author: Cristian Gheorghe SIDOR

¹Forest National Institute for Research and Development in Forestry “Marin Drăcea”,
Research Station for Norway spruce Silviculture, Calea Bucovinei 73 bis, Câmpulung
Moldovenesc, Romania

Email: cristi.sidor@yahoo.com Tel: + 40 230 314747; Fax: + 40 230 314746

Highlights

- the spatial vulnerability of Romanian Scots pine stands to climate change impact is
- quantified;

Download English Version:

<https://daneshyari.com/en/article/11024524>

Download Persian Version:

<https://daneshyari.com/article/11024524>

[Daneshyari.com](https://daneshyari.com)