

The Second CIRP Conference on Biomanufacturing

Design and prototyping of a handheld 3-DOF laparoscopic ultrasound manipulator for liver surgery

Hideyuki Sato^a, Kanako Harada^{a*}, Jumpei Arata^b, Susumu Oguri^b, Shinya Onogi^b, Tetsuo Ikeda^b, Makoto Hashizume^b, and Mamoru Mitsuishi^a

^aDepartment of Mechanical Engineering, School of Engineering, The University of Tokyo, 7-3-1 Hongo, Bunkyo-ku, Tokyo 113-8656, Japan

^bCenter for Advanced Medical Innovation, Kyushu University, Fukuoka 812-8582, Japan

* Corresponding author. Tel.: +81-3-5841-6357; fax: +81-3-5841-6357. E-mail address: kanako@nml.t.u-tokyo.ac.jp

Abstract

Laparoscopic ultrasound offers noninvasive, real-time, and low-cost intraoperative monitoring of the intra-abdominal organs. However, because of the lack of degrees of freedom in the positioning of the laparoscopic ultrasound probe, it is difficult to align an ultrasound imaging plane with the longitudinal section of a blood vessel in the liver. This paper proposes a handheld laparoscopic ultrasound manipulator with three degrees of freedom designed to manipulate a miniature laparoscopic ultrasound probe. First, an ideal range of motion, measured using sensors and quantified as the required minimum range of motion of the laparoscopic ultrasound probe, was demonstrated by a surgeon. Thereafter, a double-bevel-gear mechanism enabling a pitch motion of $\pm 40^\circ$ and a yaw motion of $\pm 30^\circ$ and a wire-driven mechanism enabling a roll motion of $\pm 60^\circ$ were designed and implemented to the laparoscopic ultrasound manipulator with three degrees of freedom. A mechanism for assembling the miniature laparoscopic ultrasound probe with the shaft of the manipulator under a laparoscopic view was also designed to minimize the number and size of incisions in the abdomen. A prototype of the manipulator with a drive unit was fabricated and tested on an ultrasound liver phantom. A successful assembly, as well as successful visualization of the longitudinal section of a blood vessel in the liver model was demonstrated in a simulated laparoscopic environment. In future, the design will be revised, and the handheld laparoscopic ultrasound manipulator with three degrees of freedom will be tested for *in vivo* experiments.

© 2015 The Authors. Published by Elsevier B.V. This is an open access article under the CC BY-NC-ND license (<http://creativecommons.org/licenses/by-nc-nd/4.0/>).

Peer-review under responsibility of the scientific committee of The Second CIRP Conference on Biomanufacturing

Keywords: Biomechatronics; Medical device; Design.

1. Introduction

Laparoscopic ultrasound (LUS) [1] is an intraoperative imaging modality that enables the observation of the internal structure of the intra-abdominal organs. Figure 1 illustrates the concept of conventional LUS imaging. A surgeon manipulates a LUS device with one or two deflection degrees of freedom (DOFs) to visualize the internal structures such as a vascular network. With such intraoperative visualization of the internal structure of organs, a surgeon can map the preoperative medical imaging information onto the deformable organs. Thus, LUS offers noninvasive, real-time, and low-cost intraoperative monitoring, contributing to accurate and safe operation.

In the detection of liver tumors, the longitudinal sectional view of a blood vessel is important to track the vascular network surrounding the liver and determine a cut line; however, the alignment of a small ultrasound imaging plane with the longitudinal section of a blood vessel is difficult and sometimes even impossible due to the lack of DOFs for positioning the LUS probe. Some researchers proposed the use of a surgical robotic system to manipulate a LUS probe [2-6]. However, the use of a surgical robotic system can be expensive for the target operation. A few other researchers proposed 2D or 3D navigation systems to facilitate the manipulation of conventional handheld LUS devices [7-12]. We propose to develop handheld multi-DOF LUS manipulators and investigate several possible designs

including the one reported in [13]. This paper describes the design, development, and evaluation of the prototype of a handheld multi-DOF LUS manipulator designed for dexterous manipulation of a miniature LUS probe in the abdominal cavity.

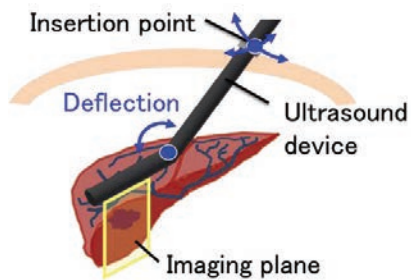


Fig. 1. Concept of LUS

2. Design and prototyping

2.1. Positioning of miniature LUS probe

This study employed a miniature LUS probe (UST-533, Hitachi Aloka Medical, Ltd., Japan). The handheld 3-DOF LUS manipulator was designed to implement three rotational DOFs namely, roll, pitch, and yaw as shown in Fig. 2(a). The implementation of the three rotational motions enlarges the ultrasound imaging range as shown in Fig. 2(b). The yaw motion is important to align the ultrasound imaging plane with the longitudinal plane of a blood vessel in the liver. The roll and pitch motions are more important to land the miniature LUS probe onto the liver surface. In the proposed scenario, the surgeon roughly positions the tip of the handheld 3-DOF LUS manipulator and then precisely controls the motorized 3-DOF motion using the handheld user interface of the manipulator.

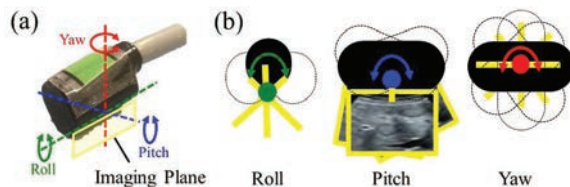


Fig. 2. Miniature LUS probe: (a) Implementation of 3 DOFs; (b) Imaging planes

2.2. Required range of motion

Although surgeons are aware of the lack of DOFs of LUS devices, there is no quantified requirement for the range of its motion. Therefore, an ideal range of motion of the LUS was measured by experiment in a simulated laparoscopic environment.

An ultrasound phantom of the intra-abdominal organs (IOUSFAN, Kyoto kagaku Co., Ltd, Japan) was placed in a

box trainer (K-ZWEI ASC-1, B Braun Aesculap Japan Co., Ltd., Japan) as shown in Fig. 3(a). The liver model contained several tumor and blood vessel models that were visible in the ultrasound imaging. A sensor coil of an electromagnetic 3D position tracking system (trakSTAR, Ascension Technology Corp., USA) and an encoder (MES-9-300P, Extcom Inc., Japan) were mounted on the handle of a conventional LUS device with one deflection DOF (UST-5536-7.5, Hitachi Aloka Medical, Ltd., Japan) as shown in Fig. 3(b). The ideal range of motion of the LUS device was measured when the surgeon moved the tip of the LUS device on the liver model as he would in an actual liver surgery. In this experiment, the motion constraint at the insertion point (Fig. 1) was removed by opening the cover of the box trainer, and the surgeon demonstrated the ideal range of motion without any motion constraints by placing his hand in the box trainer to grab and move the tip of the LUS

The tracked motion of the handle was transformed to the tip's position and orientation data. The range of motion of the tip and the ratio of the use of each DOF were used as metrics to evaluate the ideal motion. The ratio of use of a DOF is defined as the ratio of the time in motion to the task completion time. Each DOF was deemed as in motion when a motion of more than 0.5° per 100 ms was detected by the sensors.

Figure 4 shows the experimental result. The range of motion of roll is -54.7° – 53.3° , pitch -4.7° – 19.6° , and yaw -25.6° – 26.2° . The ratio of use of roll is 25.3%, pitch 9.1%, and yaw 20.9%. As observed, the roll and pitch motions were used to place the LUS probe on the surface of the liver model with the roll motion being used frequently. The yaw motion was used to align the ultrasound imaging plane.

Based on the experimental result and observation, the minimum range of motion required for the handheld 3-DOF LUS manipulator is determined as follows: roll: $\pm 60^\circ$, pitch: $\pm 20^\circ$, and yaw: $\pm 30^\circ$. The importance of the three DOFs is in the order of yaw, roll, and pitch.

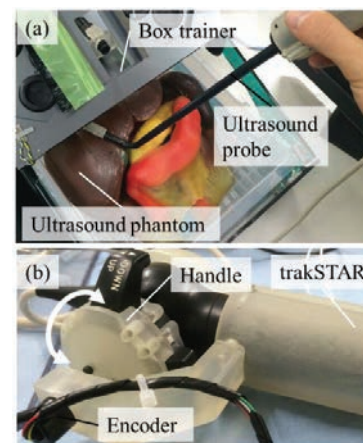


Fig. 3. Experimental setup: (a) US phantom in box trainer, (b) Implementation of sensors

Download English Version:

<https://daneshyari.com/en/article/1698239>

Download Persian Version:

<https://daneshyari.com/article/1698239>

[Daneshyari.com](https://daneshyari.com)