

Systematics, Morphology and Biogeography

Description of a new species of *Adetus* and of the female of *Wappesoeme camiri*, new records and updates to type depository for three species of *Amphicnaeia* Bates (Coleoptera, Cerambycidae)



Antonio Santos-Silva^a, Maria Helena M. Galileo^{b,*}

^a Universidade de São Paulo, Museu de Zoologia, São Paulo, SP, Brazil

^b Universidade Federal do Rio Grande do Sul, Programa de Pós-graduação em Biologia Animal, Departamento de Zoologia, Porto Alegre, RS, Brazil

ARTICLE INFO

Article history:

Received 23 May 2016

Accepted 2 September 2016

Available online 15 September 2016

Associate Editor: Lúcia Almeida

Keywords:

Apomecynini

Neotropical Region

Oemini

South America

Taxonomy

ABSTRACT

A new species of *Adetus* LeConte, 1852 is described from Bolivia. Additions to the description of *Wappesoeme* Galileo et al., 2015 and differences between males and females of *Wappesoeme camiri* Galileo et al., 2015 are provided. New country and state records are provided in Cerambycinae and Lamiinae. The type depository is corrected for three species of *Amphicnaeia* Bates, 1866.

Published by Elsevier Editora Ltda. on behalf of Sociedade Brasileira de Entomologia. This is an open access article under the CC BY-NC-ND license (<http://creativecommons.org/licenses/by-nc-nd/4.0/>).

Introduction

Adetus LeConte, 1852 is a genus of Apomecynini including 79 species occurring from the United States of America to Southern South America (Monné, 2016b). The study of specimens sent by Frederick W. Skillman, Jr. allowed us to describe a new species from Bolivia.

James E. Wappes collected and recognized three more specimens of *Wappesoeme camiri* Galileo et al., 2015. Two of these specimens are females, which made possible to add some features in the description of the genus and provided differences between males and females of *W. camiri*. He has also informed us about the incorrect type depository of some species of *Amphicnaeia* Bates, 1866 described recently (Galileo, 2015).

Additionally, the study of specimens from MZSP and USNM collections enabled us to establish new geographical records for some species of Cerambycinae and Lamiinae.

Material and methods

Photographs were taken with a Canon EOS Rebel T3i DSLR camera, Canon MP-E 65 mm f/2.8 1-5X macro lens, controlled by Zerene

Stacker AutoMontage software. Measurements were taken in “mm” using a micrometer ocular Hensoldt/Wetzlar – Mess 10 in the Leica MZ6 stereomicroscope, also used in the study of the specimen.

The collection acronyms used in this study are as follows:

ACMT – American Coleoptera Museum (James E. Wappes), San Antonio, Texas, USA;

FSCA – Florida State Collection of Arthropods, Gainesville, Florida, USA;

FWSC – Frederick W. Skillman Jr., Pearce, Arizona, USA;

MNKM – Museo de Historia Natural, Noel Kempff Mercado, Santa Cruz de la Sierra, Bolivia;

MZSP – Museu de Zoologia, Universidade de São Paulo, São Paulo, Brazil;

USNM – National Museum of Natural History, Smithsonian Institution, Washington, D.C., USA.

Results

APOMECCYNINI

Adetus LeConte, 1852

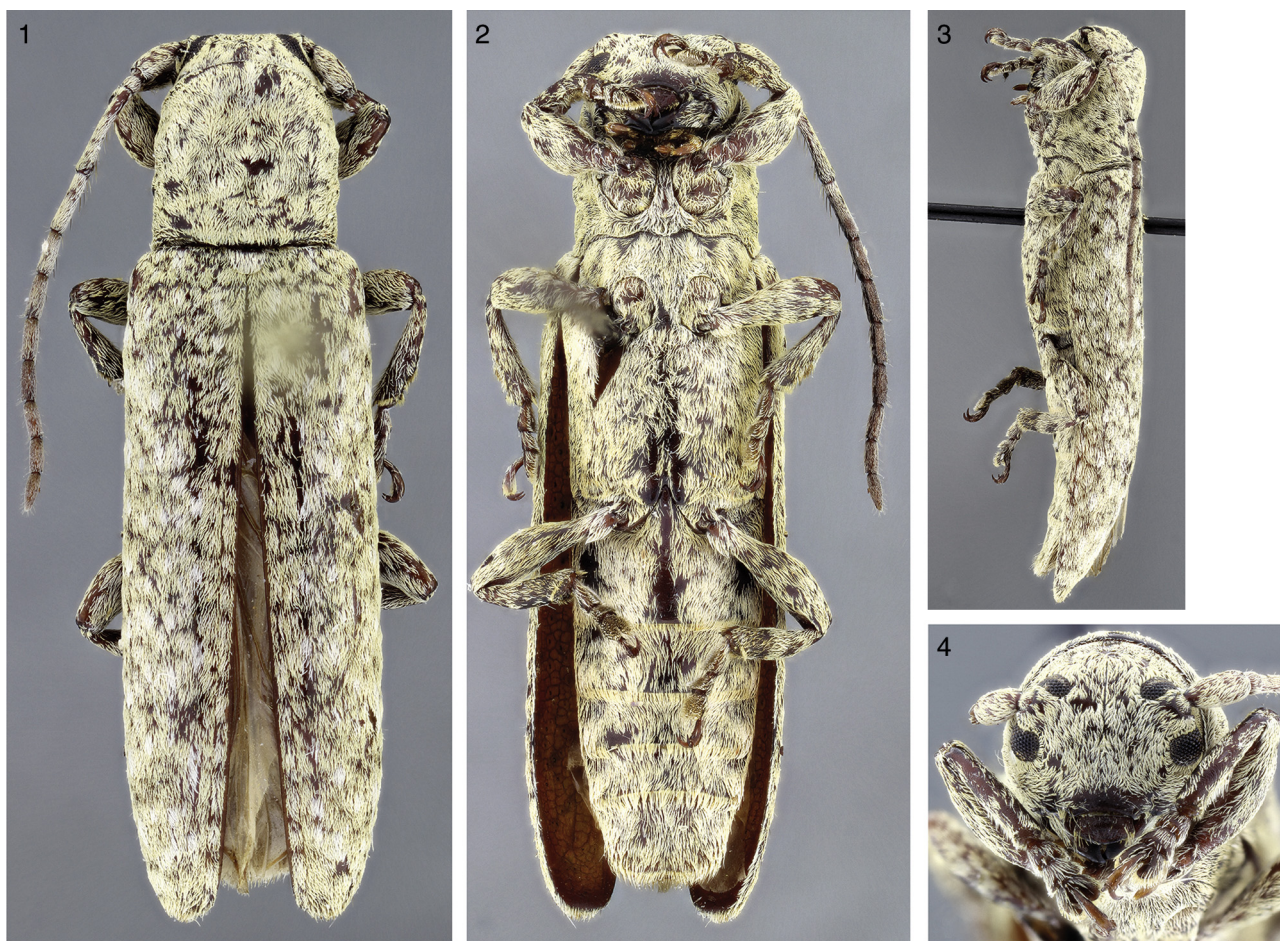
Adetus LeConte, 1852: 161; Monné, 2016b: 340 (cat.)

Adetus herrerae Santos-Silva & Galileo sp. nov.

(Figs. 1–4)

* Corresponding author.

E-mail: galileomh@yahoo.com (M.H. Galileo).



Figs. 1–4. *Adetus herrerae* sp. nov., holotype female: (1) Dorsal habitus; (2) Ventral habitus; (3) Lateral habitus; (4) Head, frontal view.

Description

Male. Integument dark-brown, darker reddish-brown on some areas; mouthparts reddish-brown. Pubescence almost entirely obscuring integument, yellowish-white; dorsally with small spots with decumbent white pubescence (mainly on elytra); ventral side with pubescence more whitish centrally (at prothorax, only on prosternal process), interspersed with irregular areas with yellowish-white pubescence.

Head. Frons transverse, finely, sparsely punctate (punctures absent close to clypeus). Vertex finely, sparsely punctate (punctures slightly denser between antennal tubercles and upper eye lobes). Coronal suture distinct from clypeus to posterior level of upper eye lobes. Area behind upper eye lobes with row of fine punctures close to eye. Genae 1.65 times length of lower eye lobes. Labrum almost glabrous centrally, with long, erect setae laterally. Upper and lower eye lobes connected by slender band with ill-formed ommatidia; distance between upper eye lobes 0.95 times length of scape; distance between lower eye lobes in frontal view 1.75 times length of scape. Antennae 0.8 times elytral length, reaching about middle of elytra; antennomeres with short, erect, sparse setae ventrally (close to inner side), gradually sparser toward distal antennomeres; antennal formula (ratio) based on antennomere III: scape = 0.59; pedicel = 0.18; IV = 0.64; V = 0.42; VI = 0.44; VII = 0.42; VIII = 0.39; IX = 0.35; X = 0.34; XI = 0.39.

Thorax. Prothorax as long as wide, wider at base than apically; sides slightly, gradually narrowed on anterior third, with two slightly distinct, rounded tubercles. Pronotum slightly, gradually

sloped downward from basal margin to apex of basal third, then distinctly sloped upward to distal margin; finely, sparsely punctate. Prosternal process distinctly sloped upward from prosternum, then gradually sloped downward toward apex. Metasternum finely, sparsely punctate laterally. Elytra. Coarsely, partially confluent punctate on base, gradually finer, sparsely punctate toward apex; surface irregularly, slightly rugose; apex individually rounded. Legs. Apex of dorsal side of tibiae with triangular area sloped downward, almost glabrous on this region that is surrounded by band of short, erect setae. Metatarsomere I 0.7 times length II–III together.

Abdomen. Ventrite V about as long as I (excluding central projection), truncate at apex.

Dimensions in mm

Total length, 12.0; prothoracic length, 2.50; anterior prothoracic width, 2.30; posterior prothoracic width, 2.50; humeral width, 3.10; elytral length, 9.10.

Type material

Holotype male from BOLIVIA, Santa Cruz: Florida province (4 km N Bermejo; Refugio Los Volcanes; 18°06' S/63°36' W; 1000–1200 m), 29.X.2011, Skillman & Wappes col. (MNKM). Paratype, sex unknown: same data as holotype except 28.X.2011 (FWSC).

Download English Version:

<https://daneshyari.com/en/article/4501558>

Download Persian Version:

<https://daneshyari.com/article/4501558>

[Daneshyari.com](https://daneshyari.com)