

Accepted Manuscript

Pepsin diffusivity in whey protein gels and its effect on gastric digestion

Qi Luo, Jan Willem Borst, Adrie H. Westphal, Remko M. Boom, Anja E.M. Janssen



PII: S0268-005X(16)30919-5

DOI: [10.1016/j.foodhyd.2016.11.046](https://doi.org/10.1016/j.foodhyd.2016.11.046)

Reference: FOOHYD 3707

To appear in: *Food Hydrocolloids*

Received Date: 21 July 2016

Revised Date: 21 November 2016

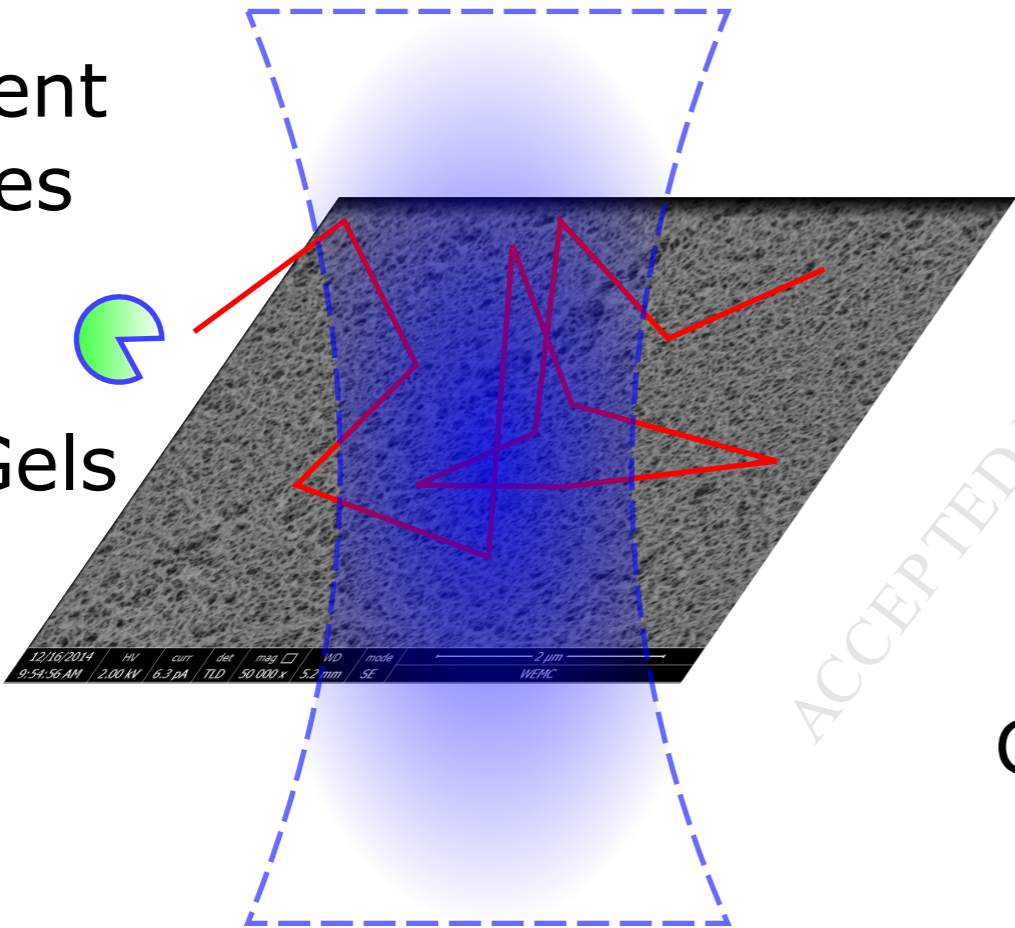
Accepted Date: 29 November 2016

Please cite this article as: Luo, Q., Borst, J.W., Westphal, A.H., Boom, R.M., Janssen, A.E.M., Pepsin diffusivity in whey protein gels and its effect on gastric digestion, *Food Hydrocolloids* (2017), doi: 10.1016/j.foodhyd.2016.11.046.

This is a PDF file of an unedited manuscript that has been accepted for publication. As a service to our customers we are providing this early version of the manuscript. The manuscript will undergo copyediting, typesetting, and review of the resulting proof before it is published in its final form. Please note that during the production process errors may be discovered which could affect the content, and all legal disclaimers that apply to the journal pertain.

CSLM+Photon Counter \Rightarrow Fluorescence Correlation Analysis

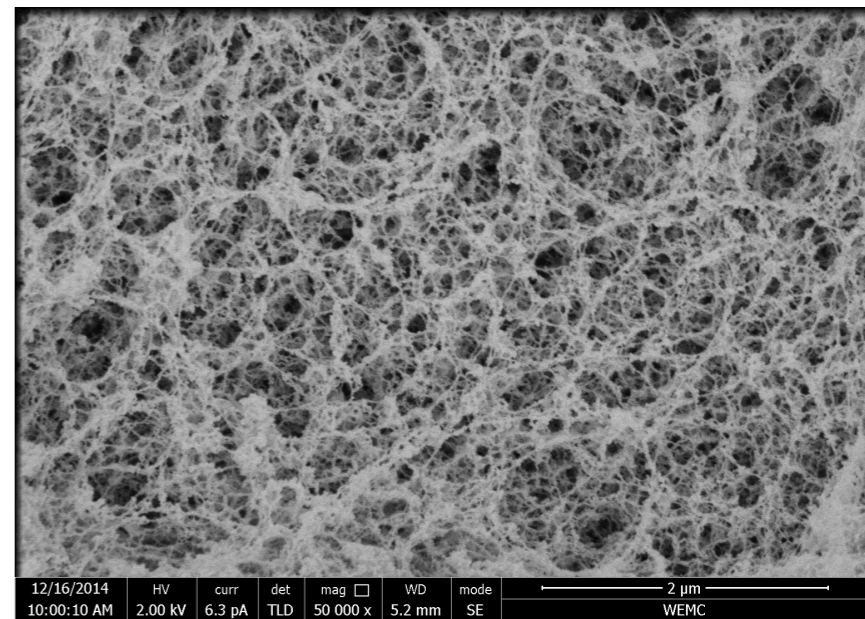
Fluorescent
Molecules
in
Whey
Protein Gels



Fluorescence Correlation Analysis

Gel structures Hinder Diffusion

Penetrated
Pepsin
Changes
Gel Structure



Download English Version:

<https://daneshyari.com/en/article/4984069>

Download Persian Version:

<https://daneshyari.com/article/4984069>

[Daneshyari.com](https://daneshyari.com)