

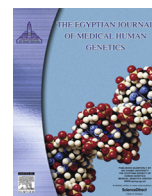
HOSTED BY



ELSEVIER

Contents lists available at ScienceDirect

## The Egyptian Journal of Medical Human Genetics

journal homepage: [www.sciencedirect.com](http://www.sciencedirect.com)

Original article

## Prevalence of food addiction and its relationship to body mass index

Alaa Youssef Ahmed<sup>a,\*</sup>, Amany Mohammed Sayed<sup>b</sup><sup>a</sup> Paediatrics Department, Ain Shams University, Egypt<sup>b</sup> Community, Environmental and Occupational Medicine Department, Ain Shams University, Egypt

## ARTICLE INFO

## Article history:

Received 3 October 2016

Accepted 23 October 2016

Available online 24 December 2016

## Keywords:

Food addiction  
Body mass index  
Adolescents  
Egypt

## ABSTRACT

**Background:** Food addiction (FA) is a new terminology that simulates craving for food to drug addiction. It is recently measured by the Yale Food Addiction Scale (YFAS). It was speculated that FA is incriminated in the current obesity epidemic. Egypt is one of the highest African countries in the prevalence of obesity. **Aim:** Estimation of the prevalence of FA in Egyptian adolescents and exploration of its relationship to the body mass index (BMI). **Subjects and methods** This study included 801 adolescents aged 11–18 years recruited by a multistage cluster sampling technique from preparatory and secondary school students distributed in Cairo. All the included subjects had their weight and height measured followed by calculation of the BMI then they were interviewed by the YFAS. The diagnosis of FA was made if there were  $\geq 3$  symptoms with clinically significant impairment.

**Results:** FA prevalence was 15.7% in the studied sample. The most prevalent FA symptom was tolerance which was present in 52.1% of the sample. FA diagnosis didn't differ across the different BMI categories; however, all of the FA symptoms showed significant differences in relation to the BMI when classified as normal, overweight and obese except for the symptom of tolerance.

**Conclusion:** FA exists in one sixth of Egyptian adolescents. FA symptoms rather than FA diagnosis differed in the different BMI categories.

© 2016 Ain Shams University. Production and hosting by Elsevier B.V. This is an open access article under the CC BY-NC-ND license (<http://creativecommons.org/licenses/by-nc-nd/4.0/>).

## 1. Introduction

The rising obesity rates in recent years [1] raised public concerns to explore the eating habits contributing to obesity. The first description of the addictive properties to sugar [2] put the basis to further exploration of this new idea and culminated in the development of the Yale Food Addiction Scale (YFAS) by Gearhardt et al. in 2009 to measure the symptomatology of food addiction (FA) [3]. Evidence exists that the biological reaction to food involves activation of opioid and dopamine pathways which are also activated by drugs of abuse. Consequently, the strong desire to obtain palatable foods was similar to the craving of addicts to get their addictive substances [3,4], despite being different in the role of abstinence [5]. FA is subject to many influences including genetic, environmental, social and neurobiological [6]. Excess consumption of unhealthy food contributes to the highly rising obesity prevalence [7]. FA represents a form of uncontrollable eating causing impaired function regarding social, occupational

or recreational activities. This form of eating to get the psychological rewarding effect of palatable food is genetically controlled by altered dopamine signals [8].

FA has been accepted recently as a valid phenotype of obesity [9]. Egypt is an African country with the highest obesity rate in adolescents among 7 recently surveyed countries [10]. Therefore the primary aim of this study was to measure FA prevalence in Egyptian adolescents and the secondary aim was to explore the relationship of the various FA symptomatology and relate them together with the diagnosis of FA to the body mass index (BMI) in a community-based sample.

## 2. Subjects and methods

This was a cross sectional study that included 801 Egyptian adolescents recruited randomly from public and private schools in Cairo over 6 months from December 2014 to May 2015. Their ages ranged from 11 to 18 years. Their mean age was  $14.4 \pm 1.7$  years.

## 2.1. Sampling technique

We had a multistage cluster sample to get a representative sample of students in the 4 zones of Cairo; eastern, western, northern

Peer review under responsibility of Ain Shams University.

\* Corresponding author at: Abbassia Square, Faculty of Medicine, Ain Shams University, Cairo 11566, Egypt.

E-mail address: [dralaayoussef@gmail.com](mailto:dralaayoussef@gmail.com) (A.Y. Ahmed).<http://dx.doi.org/10.1016/j.ejmhg.2016.10.002>

1110-8630/© 2016 Ain Shams University. Production and hosting by Elsevier B.V.

This is an open access article under the CC BY-NC-ND license (<http://creativecommons.org/licenses/by-nc-nd/4.0/>).

and southern Cairo. In the first stage, we stratified the sample according to school types (governmental and private) then schools were selected randomly from the list of schools that were obtained from the Ministry of Education. In the second stage, inside each school, school grades were stratified into (1st, 2nd and 3rd) then classes were randomly selected from each grade and all students in selected classes were eligible to participate.

## 2.2. Sample size justification

It was calculated as a cluster sample using the following formula:

Sample size for a cluster sample = simple random sample size  $\times$  design effect.

Where the design effect =  $(1 + (m - 1)p)$ ,  $m$  = size of the cluster and  $p$  = intra-cluster correlation coefficient (ICC). Assumed that the proportion to be evaluated = 0.21 and a confidence interval of width = 0.2, at 95% confidence interval. The sample size for a simple random sample = 72. For correction for design (the cluster design) we had to estimate the ICC = 0.01 and the average cluster size (average number of respondents of each type in every cluster (type of school)). The average cluster size was 40 and ICC was 0.01, we had a design effect of 1.39. So, the sample size of each group after correction was approximately 100 individuals. By multiplication of 100 by 2 types of schools in 4 districts, the whole sample was calculated as 800 students. All adolescents in the defined age range were eligible for inclusion according to randomization unless they were receiving any medications, having neurologic, neurodevelopmental, or psychiatric problems, declaring or showing signs of substances dependence or medical disease.

### 2.2.1. Clinical assessment

We measured the weight of all participants in kilograms with a digital scale with minimal clothing. Height was measured to the nearest 0.1 cm on a portable stadiometer (Seca stadiometer 213). The BMI was calculated as weight (kg)/height (m)<sup>2</sup> and standard deviation scores were calculated according to the norms [11]. All measurements were done between 9 am and 12 pm. All subjects had been interviewed to assess food addiction by the YFAS [12]. This scale is composed of 7 questions. These questions inquired about tolerance which is the intake of large amount of food to achieve the desired rewarding effect or the reduction of the pleasurable sensory input related to food with consumption of the same amount of food each time without increasing it, withdrawal symptoms when not obtaining the desired food which was similar to withdrawal manifestations in substance abuser or the intake of food to avoid the negative impact of food absence, continuing to take food for a longer time than expected, unsuccessful attempts to cut down food intake, large amount of time spent to get food or recover from its effects and continuing to eat too much in spite of knowledge of the side effects of taking too much food. Presence of  $\geq 3$  of the symptoms together with the presence of significant functional impairment in the social, occupational and recreational aspects of one's life were required to make the diagnosis of FA.

Translation of the YFAS into Arabic was done by an accredited translation office then checked by the researchers and reviewed by three experts to be sure of its validity. The diagnosis of food addiction was made if there were  $\geq 3$  symptoms with clinically significant impairment or distress [13].

Weight for height and height for age were considered normal (average) if they fell within +2 to -2 standard deviations (SDS). Below average was considered for those  $< -2$  SDS and above average was defined as  $> +2$  SDS for each of them. Overweight was defined as BMI  $> +1$  SDS and obesity was defined as BMI  $> +2$  SDS above the mean. Those with BMI  $< -2$  SDS below the mean were classified as being thin [14].

### 2.2.2. Ethical considerations

The work has been carried out in accordance with The Code of Ethics of the World Medical Association (Declaration of Helsinki) for experiments on humans. The study was approved by the local ethics committee of Ain Shams University and the Egyptian Ministry of Education as well as the administrative departments of the involved schools. Verbal assent was obtained from the adolescents participating in the study on the day of the interview.

### 2.2.3. Statistical analyses

All analyses were performed with Portable PASW statistics 18 statistical package. Mean  $\pm$  standard deviation (SD) used for quantitative variables and frequency percentage for qualitative variables. Comparison was done using the chi-squared test for qualitative variables and student  $t$  test for quantitative variables. A value of  $p < 0.05$  was considered statistically significant.

## 3. Results

This study included 801 adolescents in preparatory and secondary schools in Cairo. Their ages ranged from 11 to 18 years distributed nearly equally between public and private schools. The demographic and anthropometric criteria of the studied subjects are listed in Table 1. The prevalence of FA in the studied adolescents was 15.7%. The various FA symptoms are listed in Table 2. This study showed that the most prevalent FA symptom was tolerance (52.1%). The relationship of the diagnosis of FA to age, gender and BMI is shown in Table 3. It shows that the diagnosis of FA showed significant differences in relation to age; the mean age of adolescents without FA was  $14.36 \pm 1.7$  years while those with FA had a mean age of  $14.86 \pm 1.76$  years. Thus adolescents with FA were clustered in the age range of more than 14.5 years. The relationships of the different symptomatology of food addiction and the diagnosis of FA according to the YFAS to the different BMI categories; normal, overweight and obese are shown in Table 4. It shows that all symptoms differed significantly in the different BMI categories except tolerance.

## 4. Discussion

The prevalence of FA in Egyptian adolescents was 15.7% in consistency with the results of a systematic review which showed a prevalence of 19.9% in the general population [13]. Studies evaluating FA in obese subjects showed a higher prevalence; 38% [15], 40% [16] and up to 71% [17] in some studies. The most prevalent

**Table 1**  
Descriptive characteristics of the studied participants.

Age in years	(Mean $\pm$ SD) 14.4 $\pm$ 1.7
Age groups	Number (%)
11 - <14	280 (35)
14 - <17	410 (51.2)
$\geq 17$ -18	111(13.9)
Type of School	Number (%)
Public	424 (52.9)
Private	377 (47.1)
Height SDS	Number (%)
$< -2$ SDS	26 (3.2)
+2 to -2SDS	753 (94)
$> +2$ SDS	22 (2.7)
Weight SDS	Number (%)
$< -2$ SDS	12 (1.5)
+2 to -2SDS	571 (71.3)
$> +2$ SDS	218 (27.2)

Download English Version:

<https://daneshyari.com/en/article/5532090>

Download Persian Version:

<https://daneshyari.com/article/5532090>

[Daneshyari.com](https://daneshyari.com)