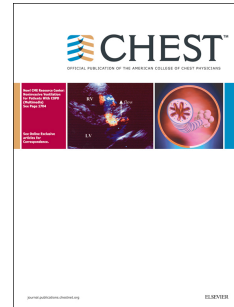


Accepted Manuscript



A critical review of the quality of cough clinical practice guidelines

Mei Jiang, Ph.D, Wei-jie Guan, Ph.D, Zhang-fu Fang, Ph.D, Yan-qing Xie, Ph.D, Jia-xing Xie, Ph.D, Hao Chen, M.D, Dang Wei, M.D, Ke-fang Lai, M.D, Nan-shan Zhong, M.D

PII: S0012-3692(16)48816-1

DOI: [10.1016/j.chest.2016.04.028](https://doi.org/10.1016/j.chest.2016.04.028)

Reference: CHEST 458

To appear in: *CHEST*

Received Date: 2 February 2016

Revised Date: 5 April 2016

Accepted Date: 26 April 2016

Please cite this article as: Jiang M, Guan Wj, Fang Zf, Xie Yq, Xie Jx, Chen H, Wei D, Lai Kf, Zhong Ns, A critical review of the quality of cough clinical practice guidelines, *CHEST* (2016), doi: 10.1016/j.chest.2016.04.028.

This is a PDF file of an unedited manuscript that has been accepted for publication. As a service to our customers we are providing this early version of the manuscript. The manuscript will undergo copyediting, typesetting, and review of the resulting proof before it is published in its final form. Please note that during the production process errors may be discovered which could affect the content, and all legal disclaimers that apply to the journal pertain.

1 **Original article**2 **A critical review of the quality of cough clinical practice guidelines**

3 Mei Jiang^{*1}, Ph.D., Wei-jie Guan^{*1}, Ph.D., Zhang-fu Fang¹, Ph.D., Yan-qing Xie¹, Ph.D., Jia-xing Xie¹,
4 Ph.D., Hao Chen², M.D., Dang Wei³, M.D., Ke-fang Lai¹, M.D., Nan-shan Zhong¹, M.D.

5
6 ¹State Key Laboratory of Respiratory Disease, National Clinical Research Center for Respiratory
7 Disease, Guangzhou Institute of Respiratory Diseases, First Affiliated Hospital of Guangzhou
8 Medical University, Guangzhou, China.

9 ²The Second Clinical College, Nanjing University of Chinese Medicine, Nanjing, China.

10 ³Evidence-Based Medicine Center, School of Basic Medical Sciences, Lanzhou University, Key
11 Laboratory of Evidence Based Medicine and Knowledge Translation of Gansu Province, Lanzhou,
12 China.

13
14 **Corresponding author 1:** Nan-shan Zhong, M. D., State Key Laboratory of Respiratory Disease,
15 National Clinical Research Center for Respiratory Disease, Guangzhou Institute of Respiratory
16 Disease, First Affiliated Hospital of Guangzhou Medical University, Guangzhou, China.

17 Address: 151 Yanjiang Road, Guangzhou, Guangdong, China.

18 E-mail: nanshan@vip.163.com

19
20 **Corresponding author 2:** Ke-fang Lai, M. D., State Key Laboratory of Respiratory Disease,
21 National Clinical Research Center for Respiratory Disease, Guangzhou Institute of Respiratory
22 Disease, First Affiliated Hospital of Guangzhou Medical University, Guangzhou, China.

Download English Version:

<https://daneshyari.com/en/article/5600654>

Download Persian Version:

<https://daneshyari.com/article/5600654>

[Daneshyari.com](https://daneshyari.com)