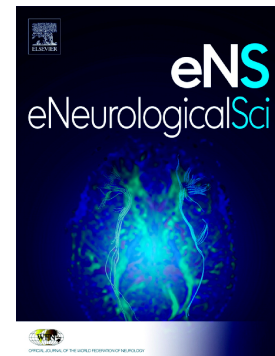


## Accepted Manuscript

Regional glucose hypometabolic spread within the primary motor cortex is associated with amyotrophic lateral sclerosis disease progression: A fluoro-deoxyglucose positron emission tomography study

Hironobu Endo, Kenji Sekiguchi, Takehiro Ueda, Hisatomo Kowa, Fumio Kanda, Tatsushi Toda



PII: S2405-6502(17)30001-1  
DOI: doi: [10.1016/j.ensci.2017.01.001](https://doi.org/10.1016/j.ensci.2017.01.001)  
Reference: ENSCI 71  
To appear in: *eNeurologicalSci*  
Received date: 23 December 2016  
Accepted date: 4 January 2017

Please cite this article as: Hironobu Endo, Kenji Sekiguchi, Takehiro Ueda, Hisatomo Kowa, Fumio Kanda, Tatsushi Toda , Regional glucose hypometabolic spread within the primary motor cortex is associated with amyotrophic lateral sclerosis disease progression: A fluoro-deoxyglucose positron emission tomography study. The address for the corresponding author was captured as affiliation for all authors. Please check if appropriate. *Ensci*(2017), doi: [10.1016/j.ensci.2017.01.001](https://doi.org/10.1016/j.ensci.2017.01.001)

This is a PDF file of an unedited manuscript that has been accepted for publication. As a service to our customers we are providing this early version of the manuscript. The manuscript will undergo copyediting, typesetting, and review of the resulting proof before it is published in its final form. Please note that during the production process errors may be discovered which could affect the content, and all legal disclaimers that apply to the journal pertain.

**Regional glucose hypometabolic spread within the primary motor cortex is associated with amyotrophic lateral sclerosis disease progression: A fluoro-deoxyglucose positron emission tomography study**

Hironobu Endo, MD; Kenji Sekiguchi, MD; Takehiro Ueda, MD; Hisatomo Kowa, MD; Fumio Kanda, MD; and Tatsushi Toda, MD

Division of Neurology, Kobe University Graduate School of Medicine, Kobe City, Japan

**Corresponding author:**

Kenji Sekiguchi

E-mail: sekiguch@med.kobe-u.ac.jp

Telephone number: +81-78-382-5885

Division of Neurology, Kobe University Graduate School of Medicine

7-5-2, Kusunoki-cho, Chuo-ku, Kobe City, Hyogo, Japan 650-0017

Download English Version:

<https://daneshyari.com/en/article/6009698>

Download Persian Version:

<https://daneshyari.com/article/6009698>

[Daneshyari.com](https://daneshyari.com)