

## Accepted Manuscript

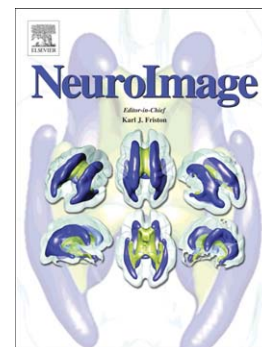
Integrating longitudinal information in hippocampal volume measurements for the early detection of Alzheimer's disease

Andrea Chincarini, Francesco Sensi, Luca Rei, Gianluca Gemme, Sandro Squarcia, Renata Longo, Francesco Brun, Sabina Tangaro, Roberto Bellotti, Nicola Amoroso, Martina Bocchetta, Alberto Redolfi, Paolo Bosco, Marina Boccardi, Giovanni B. Frisoni, Flavio Nobili

PII: S1053-8119(15)00981-7  
DOI: doi: [10.1016/j.neuroimage.2015.10.065](https://doi.org/10.1016/j.neuroimage.2015.10.065)  
Reference: YNIMG 12700

To appear in: *NeuroImage*

Received date: 4 June 2015  
Accepted date: 1 October 2015



Please cite this article as: Chincarini, Andrea, Sensi, Francesco, Rei, Luca, Gemme, Gianluca, Squarcia, Sandro, Longo, Renata, Brun, Francesco, Tangaro, Sabina, Bellotti, Roberto, Amoroso, Nicola, Bocchetta, Martina, Redolfi, Alberto, Bosco, Paolo, Boccardi, Marina, Frisoni, Giovanni B., Nobili, Flavio, Integrating longitudinal information in hippocampal volume measurements for the early detection of Alzheimer's disease, *NeuroImage* (2015), doi: [10.1016/j.neuroimage.2015.10.065](https://doi.org/10.1016/j.neuroimage.2015.10.065)

This is a PDF file of an unedited manuscript that has been accepted for publication. As a service to our customers we are providing this early version of the manuscript. The manuscript will undergo copyediting, typesetting, and review of the resulting proof before it is published in its final form. Please note that during the production process errors may be discovered which could affect the content, and all legal disclaimers that apply to the journal pertain.

# Integrating longitudinal information in hippocampal volume measurements for the early detection of Alzheimer's disease

Andrea Chincarini<sup>a,\*</sup>, Francesco Sensi<sup>a</sup>, Luca Rei<sup>a,b</sup>, Gianluca Gemme<sup>a</sup>, Sandro Squarcia<sup>a,b</sup>, Renata Longo<sup>g,e</sup>, Francesco Brun<sup>f,e</sup>, Sabina Tangaro<sup>d</sup>, Roberto Bellotti<sup>c,d</sup>, Nicola Amoroso<sup>c,d</sup>, Martina Bocchetta<sup>h,i</sup>, Alberto Redolfi<sup>h</sup>, Paolo Bosco<sup>h</sup>, Marina Boccardi<sup>h</sup>, Giovanni B. Frisoni<sup>k,h</sup>, Flavio Nobili<sup>j</sup>, and for the Alzheimer's Disease Neuroimaging Initiative<sup>1</sup>

<sup>a</sup>*Istituto Nazionale di Fisica Nucleare, Sezione di Genova, I-16146, Genova, Italy*

<sup>b</sup>*Dipartimento di Fisica, Università degli Studi di Genova, I-16146, Genova, Italy*

<sup>c</sup>*Dipartimento Interateneo di Fisica, Università degli Studi di Bari, Italy*

<sup>d</sup>*Istituto Nazionale di Fisica Nucleare, Sezione di Bari, Italy*

<sup>e</sup>*Istituto Nazionale di Fisica Nucleare, Sezione di Trieste, Italy*

<sup>f</sup>*Dipartimento di Ingegneria e Architettura, Università degli Studi di Trieste, Italy*

<sup>g</sup>*Dipartimento di Fisica, Università degli Studi di Trieste, Italy*

<sup>h</sup>*IRCCS Centro San Giovanni di Dio Fatebenefratelli, I-25125, Brescia, Italy*

<sup>i</sup>*Department of Molecular and Translational Medicine, University of Brescia, Brescia, Italy*

<sup>j</sup>*Neurofisiologia Clinica, Dipartimento di Neuroscienze, Oftalmologia e Genetica, Azienda Ospedale-Università S. Martino, Genova, I-16132, Genova, Italy*

<sup>k</sup>*University Hospitals and University of Geneva, Geneva, Switzerland*

---

## Keywords:

MRI, Image analysis, Longitudinal measure, Alzheimer's disease, Hippocampus

PACS: 87.61.-c, 87.57.N-, 87.61.Tg

---

\*Corresponding author. Address: INFN, via Dodecaneso 33, I-16146 Genova, Italy. Tel.: +39 010 353 6496; fax: +39 010 313358.

*Email address:* [andrea.chincarini@ge.infn.it](mailto:andrea.chincarini@ge.infn.it) (Andrea Chincarini)

<sup>1</sup>Data used in preparation of this article were obtained from the Alzheimers Disease Neuroimaging Initiative (ADNI) database ([adni.loni.ucla.edu](http://adni.loni.ucla.edu)). As such, the investigators within the ADNI contributed to the design and implementation of ADNI and/or provided data but did not participate in analysis or writing of this report. A complete listing of ADNI investigators can be found at: [adni.loni.ucla.edu/wp-content/uploads/how\\_to\\_apply/ADNI\\_Acknowledgement\\_List.pdf](http://adni.loni.ucla.edu/wp-content/uploads/how_to_apply/ADNI_Acknowledgement_List.pdf)

Download English Version:

<https://daneshyari.com/en/article/6024187>

Download Persian Version:

<https://daneshyari.com/article/6024187>

[Daneshyari.com](https://daneshyari.com)