

Accepted Manuscript

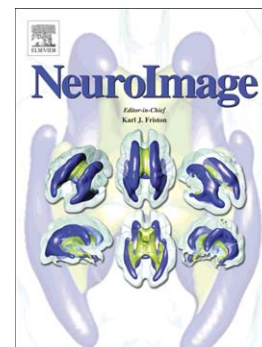
Differential activity in Heschl's gyrus between deaf and hearing individuals is due to auditory deprivation rather than language modality

Velia Cardin, C. Rebecca Smittenaar, Eleni Orfanidou, Jerker Rönnerberg, Cheryl M. Capek, Mary Rudner, Bencie Woll

PII: S1053-8119(15)00794-6
DOI: doi: [10.1016/j.neuroimage.2015.08.073](https://doi.org/10.1016/j.neuroimage.2015.08.073)
Reference: YNIMG 12554

To appear in: *NeuroImage*

Received date: 7 April 2015
Accepted date: 24 August 2015



Please cite this article as: Cardin, Velia, Rebecca Smittenaar, C., Orfanidou, Eleni, Rönnerberg, Jerker, Capek, Cheryl M., Rudner, Mary, Woll, Bencie, Differential activity in Heschl's gyrus between deaf and hearing individuals is due to auditory deprivation rather than language modality, *NeuroImage* (2015), doi: [10.1016/j.neuroimage.2015.08.073](https://doi.org/10.1016/j.neuroimage.2015.08.073)

This is a PDF file of an unedited manuscript that has been accepted for publication. As a service to our customers we are providing this early version of the manuscript. The manuscript will undergo copyediting, typesetting, and review of the resulting proof before it is published in its final form. Please note that during the production process errors may be discovered which could affect the content, and all legal disclaimers that apply to the journal pertain.

Title: Differential activity in Heschl's gyrus between deaf and hearing individuals is due to auditory deprivation rather than language modality

Velia Cardin^{1,2*}, C. Rebecca Smittenaar³, Eleni Orfanidou^{1,4}, Jerker Rönnerberg², Cheryl M. Copek⁵, Mary Rudner^{2§} & Bencie Woll^{1§}

1. Deafness, Cognition and Language Research Centre, 49 Gordon Square, University College London, London WC1H 0BT, United Kingdom.

2. Linnaeus Centre HEAD, Swedish Institute for Disability Research, Department of Behavioural Sciences and Learning, Linköping University, Sweden.

3. Experimental Psychology, 26 Bedford Way, University College London, London WC1H 0AP, United Kingdom.

4. School of Psychology, University of Crete, Greece.

5. School of Psychological Sciences, University of Manchester, Manchester M13 9PL, United Kingdom.

* To whom correspondence should be addressed:

Dr. Velia Cardin. Deafness, Cognition and Language Research Centre, 49 Gordon Square, University College London, London WC1H 0PD, United Kingdom, and Linnaeus Centre HEAD, Swedish Institute for Disability Research, Department of Behavioural Sciences and Learning, Linköping University, Sweden. e-mail: velia.cardin@gmail.com. Tel: +44 (0) 20 7679 5822.

§ These authors contributed equally to this study.

Running title: Heschl's gyrus, deafness and language

Key Words: Heschl's gyrus, deafness, sign language, speech, fMRI.

Download English Version:

<https://daneshyari.com/en/article/6024248>

Download Persian Version:

<https://daneshyari.com/article/6024248>

[Daneshyari.com](https://daneshyari.com)