

# Accepted Manuscript

In-situ micro-tensile investigation of strain rate response along  $\langle 100 \rangle$  and  $\langle 110 \rangle$  directions in single crystal nickel

Alan Xu, Michael Saleh, Joel Davis, Lyndon Edwards, Dhriti Bhattacharyya

PII: S0749-6419(17)30589-2

DOI: [10.1016/j.ijplas.2018.03.005](https://doi.org/10.1016/j.ijplas.2018.03.005)

Reference: INTPLA 2318

To appear in: *International Journal of Plasticity*

Received Date: 18 October 2017

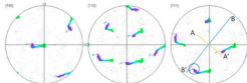
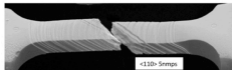
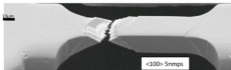
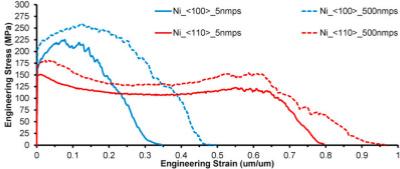
Revised Date: 19 February 2018

Accepted Date: 7 March 2018

Please cite this article as: Xu, A., Saleh, M., Davis, J., Edwards, L., Bhattacharyya, D., In-situ micro-tensile investigation of strain rate response along  $\langle 100 \rangle$  and  $\langle 110 \rangle$  directions in single crystal nickel, *International Journal of Plasticity* (2018), doi: 10.1016/j.ijplas.2018.03.005.

This is a PDF file of an unedited manuscript that has been accepted for publication. As a service to our customers we are providing this early version of the manuscript. The manuscript will undergo copyediting, typesetting, and review of the resulting proof before it is published in its final form. Please note that during the production process errors may be discovered which could affect the content, and all legal disclaimers that apply to the journal pertain.





Download English Version:

<https://daneshyari.com/en/article/7174805>

Download Persian Version:

<https://daneshyari.com/article/7174805>

[Daneshyari.com](https://daneshyari.com)