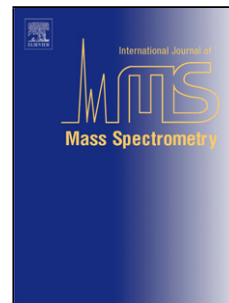


## Accepted Manuscript

Title: Comprehensive and Sensitive Proteogenomics Data Analysis Strategy based on Complementary Multi-Stage Database Search

Authors: Inamul Hasan Madar, Wonyeop Lee, Xiaojing Wang, Seung-Ik Ko, Hokeun Kim, Dong-Gi Mun, Bing Zhang, Eunok Paek, Sang-Won Lee



PII: S1387-3806(17)30225-7  
DOI: <http://dx.doi.org/10.1016/j.ijms.2017.08.015>  
Reference: MASPEC 15858

To appear in: *International Journal of Mass Spectrometry*

Received date: 30-4-2017  
Revised date: 1-8-2017  
Accepted date: 22-8-2017

Please cite this article as: Inamul Hasan Madar, Wonyeop Lee, Xiaojing Wang, Seung-Ik Ko, Hokeun Kim, Dong-Gi Mun, Bing Zhang, Eunok Paek, Sang-Won Lee, Comprehensive and Sensitive Proteogenomics Data Analysis Strategy based on Complementary Multi-Stage Database Search, *International Journal of Mass Spectrometry* <http://dx.doi.org/10.1016/j.ijms.2017.08.015>

This is a PDF file of an unedited manuscript that has been accepted for publication. As a service to our customers we are providing this early version of the manuscript. The manuscript will undergo copyediting, typesetting, and review of the resulting proof before it is published in its final form. Please note that during the production process errors may be discovered which could affect the content, and all legal disclaimers that apply to the journal pertain.

# Comprehensive and Sensitive Proteogenomics Data Analysis Strategy based on Complementary Multi-Stage Database Search

Inamul Hasan Madar<sup>1†</sup>, Wonyeop Lee<sup>2†</sup>, Xiaojing Wang<sup>3†</sup>, Seung-Ik Ko<sup>1</sup>, Hokeun Kim<sup>1</sup>, Dong-Gi Mun<sup>1</sup>, Bing Zhang<sup>3\*</sup>, Eunok Paek<sup>2\*</sup>, Sang-Won Lee<sup>1\*</sup>

<sup>1</sup>Department of Chemistry and Cancer Proteogenomics Research Center, Korea University, Seoul 02843, Republic of Korea

<sup>2</sup>Department of Computer Science, Hanyang University, Seoul 04763, Republic of Korea

<sup>3</sup>Department of Molecular and Human Genetics and Lester & Sue Smith Breast Center, Baylor College of Medicine, One Baylor Plaza, Suite NB100, Houston, Texas 77030, United States

\*Corresponding Authors:

Sang-Won Lee, Tel: +82-2-3290-3137; Fax: +82-2-3290-3121; E-mail: sw\_lee@korea.ac.kr.

Eunok Paek, Tel: +82-2-2220-2377; Fax: +82-2-2220-1723; E-mail: eunokpaek@hanyang.ac.kr.

Bing Zhang, Tel: +1-713-798-1443; Fax: +1-713-798-1990; E-mail:bing.zhang@bcm.edu

† These authors made equal contributions to this work

Download English Version:

<https://daneshyari.com/en/article/7602978>

Download Persian Version:

<https://daneshyari.com/article/7602978>

[Daneshyari.com](https://daneshyari.com)