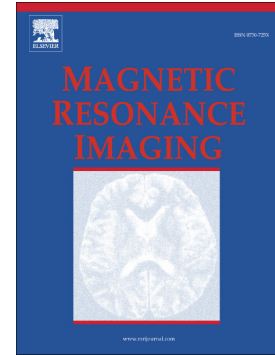


## Accepted Manuscript

Single-shot late Gd enhancement imaging of myocardial infarction with retrospectively adjustable contrast and heart-phase

Tobias Wech, Johannes Tran-Gia, Felix Rützel, Thorsten Klink, Thorsten A. Bley, Herbert Köstler



PII: S0730-725X(17)30233-3  
DOI: doi:[10.1016/j.mri.2017.10.008](https://doi.org/10.1016/j.mri.2017.10.008)  
Reference: MRI 8852

To appear in:

Received date: 19 June 2017  
Revised date: 23 October 2017  
Accepted date: 31 October 2017

Please cite this article as: Tobias Wech, Johannes Tran-Gia, Felix Rützel, Thorsten Klink, Thorsten A. Bley, Herbert Köstler , Single-shot late Gd enhancement imaging of myocardial infarction with retrospectively adjustable contrast and heart-phase. The address for the corresponding author was captured as affiliation for all authors. Please check if appropriate. *Mri*(2017), doi:[10.1016/j.mri.2017.10.008](https://doi.org/10.1016/j.mri.2017.10.008)

This is a PDF file of an unedited manuscript that has been accepted for publication. As a service to our customers we are providing this early version of the manuscript. The manuscript will undergo copyediting, typesetting, and review of the resulting proof before it is published in its final form. Please note that during the production process errors may be discovered which could affect the content, and all legal disclaimers that apply to the journal pertain.

# Single-Shot Late Gd Enhancement Imaging of Myocardial Infarction with Retrospectively Adjustable Contrast and Heart-Phase

Tobias Wech<sup>1,2,\*</sup>, Johannes Tran-Gia<sup>1,3</sup>, Felix Rützel<sup>1</sup>, Thorsten Klink<sup>1</sup>, Thorsten A. Bley<sup>1</sup>,  
and Herbert Köstler<sup>1,2</sup>

<sup>1</sup>Institute of Diagnostic and Interventional Radiology, University of Würzburg, Würzburg, Germany

<sup>2</sup>Comprehensive Heart Failure Center, University of Würzburg, Würzburg, Germany

<sup>3</sup>Institute of Nuclear Medicine, University of Würzburg, Würzburg, Germany

**\*Correspondence to:** Tobias Wech  
Institute of Diagnostic and Interventional Radiology  
University of Würzburg  
Oberdürrbacherstr. 6  
97080 Würzburg  
Germany  
Tel.: +49-931-201-34971  
Email: wech\_t@ukw.de

**Key words:** Heart, Myocardium, Cardiomyopathies, Magnetic Resonance Imaging, Myocardial infarction

**Article Type:** Technical Note

**Running Title:** Late Enhancement Imaging in Myocardium with Retrospectively Adjustable Contrast

**Grant Support:** DFG (KO 2938/4-1), Siemens Healthcare (Research Grant)

**Word count:** 2948 (including abstract)

**Figures:** 3

**Tables:** 1

**References:** 17

Download English Version:

<https://daneshyari.com/en/article/8159999>

Download Persian Version:

<https://daneshyari.com/article/8159999>

[Daneshyari.com](https://daneshyari.com)