

## Accepted Manuscript

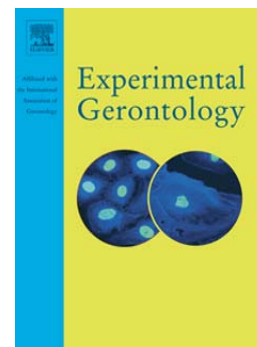
Lower skeletal muscle capillarization in hypertensive elderly men

Marine Gueugneau, Cécile Coudy-Gandilhon, Bruno Meunier, Lydie Combaret, Daniel Taillandier, Cécile Polge, Didier Attaix, Frédéric Roche, Léonard Féasson, Jean-Claude Barthélémy, Daniel Béchet

PII: S0531-5565(16)30013-4  
DOI: doi: [10.1016/j.exger.2016.01.013](https://doi.org/10.1016/j.exger.2016.01.013)  
Reference: EXG 9773

To appear in: *Experimental Gerontology*

Received date: 10 November 2015  
Revised date: 14 January 2016  
Accepted date: 25 January 2016



Please cite this article as: Gueugneau, Marine, Coudy-Gandilhon, Cécile, Meunier, Bruno, Combaret, Lydie, Taillandier, Daniel, Polge, Cécile, Attaix, Didier, Roche, Frédéric, Féasson, Léonard, Barthélémy, Jean-Claude, Béchet, Daniel, Lower skeletal muscle capillarization in hypertensive elderly men, *Experimental Gerontology* (2016), doi: [10.1016/j.exger.2016.01.013](https://doi.org/10.1016/j.exger.2016.01.013)

This is a PDF file of an unedited manuscript that has been accepted for publication. As a service to our customers we are providing this early version of the manuscript. The manuscript will undergo copyediting, typesetting, and review of the resulting proof before it is published in its final form. Please note that during the production process errors may be discovered which could affect the content, and all legal disclaimers that apply to the journal pertain.

## Lower skeletal muscle capillarization in hypertensive elderly men

**Marine Gueugneau<sup>a,b,2</sup>, Cécile Coudy-Gandilhon<sup>a,b</sup>, Bruno Meunier<sup>c</sup>, Lydie Combaret<sup>a,b</sup>,  
Daniel Taillandier<sup>a,b</sup>, Cécile Polge<sup>a,b</sup>, Didier Attaix<sup>a,b</sup>, Frédéric Roche<sup>d</sup>, Léonard  
Féasson<sup>e,f</sup>, Jean-Claude Barthélémy<sup>d</sup>, and Daniel Béchet<sup>a,b,1</sup>**

<sup>a</sup> INRA, UMR1019, Unité de Nutrition Humaine, CRNH Auvergne, F-63122 Saint-Genès Champanelle, France

<sup>b</sup> Clermont Université, Université d'Auvergne, F-63000 Clermont-Ferrand, France

<sup>c</sup> INRA-Vetagro Sup, UMR1213, F-63122 Saint-Genès Champanelle, France

<sup>d</sup> Service de Physiologie Clinique et de l'Exercice, CHU Nord, Faculté de Médecine Jacques Lisfranc, PRES de Lyon, Université Jean Monnet, F-42055 Saint-Etienne, France

<sup>e</sup> Unité de Myologie, Centre Référent Maladies Neuromusculaires Rares Rhône-Alpes, CHU de Saint-Etienne F-42055

<sup>f</sup> Laboratoire de Physiologie de l'Exercice EA4338, Université Jean Monnet, Saint-Etienne F-42023, Université de Lyon, France

<sup>1</sup> Corresponding author at: INRA, UMR1019, Unité de Nutrition Humaine, CRNH Auvergne, F-63122 Saint-Genès Champanelle, France.

Email address: daniel.bechet@clermont.inra.fr (D. Béchet)

<sup>2</sup> Present address: Pôle Endocrinologie, Diabétologie et Nutrition, Institut de Recherches Expérimentales et Cliniques, Université Catholique de Louvain, B-1200 Brussels, Belgium.

**Abbreviations used:** CAF, mean number of capillaries around a single fiber; CD, capillary density; C/F, capillary-to-fiber ratio; C/Fi, individual capillary-to-fiber ratio; CFPE, capillary-

Download English Version:

<https://daneshyari.com/en/article/8262933>

Download Persian Version:

<https://daneshyari.com/article/8262933>

[Daneshyari.com](https://daneshyari.com)