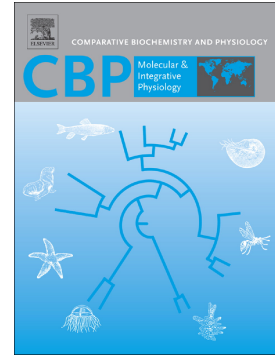


Accepted Manuscript

Expression profile of glucose transport-related genes under chronic and acute exposure to growth hormone in zebrafish

Camila Dalmolin, Daniela Volcan Almeida, Marcio Azevedo Figueiredo, Luis Fernando Marins



PII: S1095-6433(18)30031-X
DOI: doi:[10.1016/j.cbpa.2018.02.015](https://doi.org/10.1016/j.cbpa.2018.02.015)
Reference: CBA 10312

To appear in:

Received date: 11 August 2017
Revised date: 23 February 2018
Accepted date: 27 February 2018

Please cite this article as: Camila Dalmolin, Daniela Volcan Almeida, Marcio Azevedo Figueiredo, Luis Fernando Marins , Expression profile of glucose transport-related genes under chronic and acute exposure to growth hormone in zebrafish. The address for the corresponding author was captured as affiliation for all authors. Please check if appropriate. Cba(2018), doi:[10.1016/j.cbpa.2018.02.015](https://doi.org/10.1016/j.cbpa.2018.02.015)

This is a PDF file of an unedited manuscript that has been accepted for publication. As a service to our customers we are providing this early version of the manuscript. The manuscript will undergo copyediting, typesetting, and review of the resulting proof before it is published in its final form. Please note that during the production process errors may be discovered which could affect the content, and all legal disclaimers that apply to the journal pertain.

Expression profile of glucose transport-related genes under chronic and acute exposure to growth hormone in zebrafish

Camila Dalmolin, Daniela Volcan Almeida, Marcio Azevedo Figueiredo, Luis Fernando Marins*

Laboratório de Biologia Molecular, Instituto de Ciências Biológicas, Universidade Federal do Rio Grande - FURG, Rio Grande, RS, Brazil

*Send correspondence to L. F. Marins. Instituto de Ciências Biológicas, Universidade Federal do Rio Grande – FURG, Av. Itália km 8, 96203-900, Rio Grande, RS, Brazil. Tel. +55 53 32935191. E-mail: dqmluf@furg.br

Acknowledgments

This work was supported by Brazilian CNPq (Conselho Nacional de Desenvolvimento Científico e Tecnológico) and CAPES (Coordenação de Aperfeiçoamento de Pessoal de Nível Superior). L. F. Marins is a research fellow from CNPq (Proc. No. 305928/2015-5).

Download English Version:

<https://daneshyari.com/en/article/8318154>

Download Persian Version:

<https://daneshyari.com/article/8318154>

[Daneshyari.com](https://daneshyari.com)