

## Short communication

# Marijuana use differentially affects cannabinoid receptor expression in early gestational human endometrium and placenta



Naveen K. Neradugomma<sup>a,\*\*</sup>, Kaitlyn Drafton<sup>a</sup>, Diana R. O'Day<sup>b</sup>, Michael Z. Liao<sup>a</sup>,  
Lyrielle W. Han<sup>a</sup>, Ian A. Glass<sup>b</sup>, Qingcheng Mao<sup>a,\*</sup>

<sup>a</sup> Department of Pharmaceutics, School of Pharmacy, University of Washington, Seattle, WA 98195, United States

<sup>b</sup> Department of Pediatrics, School of Medicine, University of Washington, Seattle, WA 98195, United States

## ARTICLE INFO

## Keywords:

Marijuana  
Cannabinoid  
Cannabinoid receptor  
Placenta  
Uterine endometrium

## ABSTRACT

Marijuana is one of the most abused drugs among pregnant women leading to maternal and fetal abnormalities. Cannabinoids are the active ingredients of marijuana, which interact with cannabinoid receptors such as CNR1 and CNR2 to activate cellular signaling pathways. Human endometrium and placenta are known to express CNR1 and CNR2 and can respond to cannabinoid signaling. In this study, we show that marijuana use significantly increases mRNA or protein expression of CNR1 and CNR2 in human endometrium from the first and early second trimester pregnancies, with minor effects on placental expression of CNRs.

## 1. Introduction

Marijuana is extracted from plants of *Cannabis sp.* [1]. Over the last decade, marijuana use by pregnant women has increased by ~65% in the US particularly among young women of low socio-economic status [2,3]. Metadata analysis indicates that marijuana use prior to or during pregnancy could contribute to low fetal birth weight, preterm delivery, congenital malformation and neonatal complications [2,4,5].

Marijuana is a mixture of > 60 plant cannabinoids (pCBs) which are highly lipophilic with high protein binding capacity, and can accumulate in a variety of tissues and release slowly over extended periods [6,7]. The endocannabinoids (eCBs), like N-arachidonoyl- ethanolamine and 2-arachidonoylglycerol, are active endogenous cannabinoid-like molecules generated via fatty acid metabolism in higher vertebrates [8,9]. Both pCBs and eCBs interact with cannabinoid receptors (CNRs) such as CNR1 and CNR2 to activate intracellular signaling cascades, which plays important roles in various physiological and pathophysiological processes, including cell death, inflammation and neuroprotection [10,11].

The endocannabinoid system is expressed in reproductive organs and regulates diverse reproductive events [12,13]. Higher endocannabinoid signaling can lead to early pregnancy failures [14]. There is very limited knowledge about how marijuana use either alone or in combination with confounding factors such as tobacco, alcohol and opioid abuse might influence CNR expression in reproductive

tissues critical for a successful pregnancy, such as the uterine endometrium (decidua) and placenta. Since CNRs are necessary for cannabinoid signaling, in the current study, we evaluate CNR1 and CNR2 mRNA and protein expression in early gestation human endometrial and placental tissues obtained from non-users, marijuana users and tobacco/alcohol users.

## 2. Materials and methods

See “Supplemental Materials”.

## 3. Results and discussion

We categorized endometrial and placental tissues of early gestation into non-users, tobacco/alcohol users and marijuana users (Table S1) as described in “Supplemental Materials”. In some cases, such as subject 368, only placental tissue was obtained and analyzed. In other instances, we analyzed either mRNA or protein due to limited amounts of tissues available, and hence placental tissues from subjects 367, 372, 419, 422, 424 and endometrial sample from subject 405 were analyzed for mRNA expression only.

CNR1 and CNR2 could be readily detected in all endometrium and placenta samples analyzed; however, there were considerable inter-individual variations in mRNA (Fig. 1A and Fig. 2A) and protein (Fig. 1C, Fig. 1D and Fig. 2C, Fig. 2D) expression pattern. While the mRNA levels

**Abbreviations:** CNR1, cannabinoid receptor 1; CNR2, cannabinoid receptor 2; CBs, cannabinoids; eCBs, endocannabinoids; ACTB,  $\beta$ -actin

\* Corresponding author. Department of Pharmaceutics, School of Pharmacy, University of Washington, Room H272F, Health Science Building, Seattle, WA 98195-7610, United States.

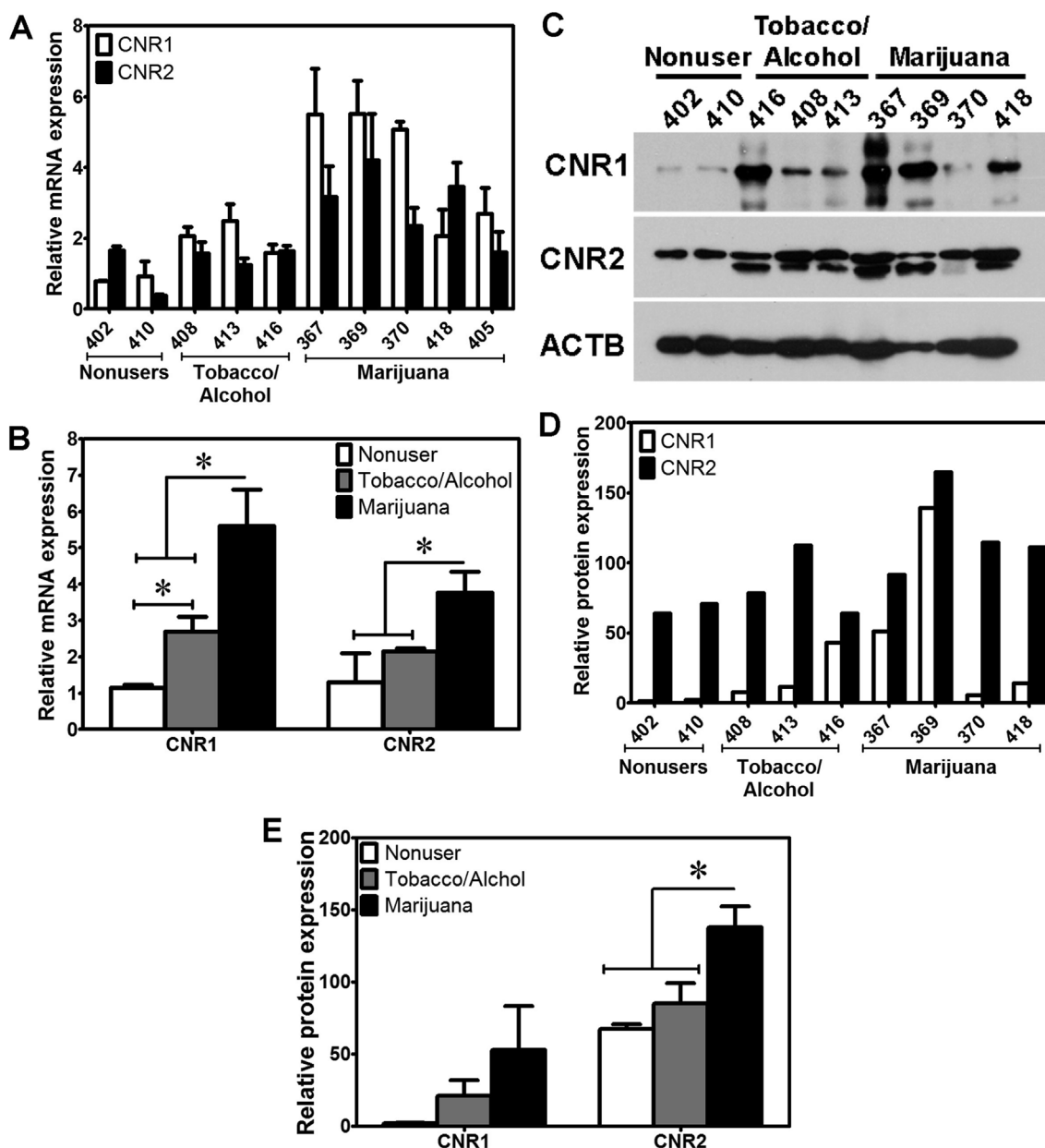
\*\* Corresponding author. Department of Pharmaceutics, School of Pharmacy, University of Washington, Room H259, Health Science Building, Seattle, WA 98195-7610, United States.

E-mail addresses: [naveennk@uw.edu](mailto:naveennk@uw.edu) (N.K. Neradugomma), [qmao@uw.edu](mailto:qmao@uw.edu) (Q. Mao).

<https://doi.org/10.1016/j.placenta.2018.05.002>

Received 27 March 2018; Accepted 6 May 2018

0143-4004/ © 2018 Elsevier Ltd. All rights reserved.



**Fig. 1. Endometrial expression of CNRs.** A) The relative levels of mRNA expression of CNR1 and CNR2 in endometrium of individual donors. B) The relative levels of mRNA expression of CNR1 and CNR2 in endometrium among the three groups of non-users, tobacco/alcohol users and marijuana users. C) Western blot detecting CNR1 and CNR2 protein expression in endometrium of individual donors. D) The relative levels of protein expression of CNR1 and CNR2 in endometrium of individual donors. E) The relative levels of protein expression of CNR1 and CNR2 in endometrium among the three groups of non-users, tobacco/alcohol users and marijuana users. \*indicates significant differences ( $p < 0.05$ ) in mRNA or protein levels of CNR1 or CNR2 between marijuana users and marijuana non-users.

of CNR1 and CNR2 in the endometrium of marijuana users were significantly higher compared to those of non-users and tobacco/alcohol users combined (Fig. 1B), only the levels of CNR1 mRNA in tobacco/alcohol users were higher than those in non-users (Fig. 1B). In contrast, the protein levels of CNR2, but not of CNR1, in endometrium of marijuana users were significantly higher than those of non-users and tobacco/alcohol users combined (Fig. 1E). There were no significant differences in protein expression of CNR1 and CNR2 between non-users and tobacco/alcohol users (Fig. 1E). We did not observe significant differences in the levels of mRNA or protein expression of both CNR1 and CNR2 in the placentas between non-users and marijuana users or tobacco/alcohol users (Fig. 2B and Fig. 2E). The protein levels of CNR2 in the placentas of marijuana users were significantly lower than those of tobacco/alcohol users (Fig. 2E). Our data suggest that marijuana use during early gestation increases mRNA and protein expression of CNR1

or CNR2 in the endometrium, with little effects on CNR expression in the placenta.

Successful pregnancy requires fruitful reciprocal interactions between a competent embryo and a receptive endometrium, and interference in this process can compromise pregnancy [15]. In this study, we confirmed previous reports that CNR1 and CNR2 were detectable at mRNA and/or protein levels in human endometrium/decidua [16] and placenta [17]. This study is the first to evaluate decidual CNR expression in early pregnancy and demonstrates the potential impact of marijuana use by pregnant women during early gestation on CNR expression in the endometrium and placenta. We showed that, while tobacco/alcohol use generally did not seem to alter CNR expression, marijuana use significantly increased mRNA or protein expression of CNR1 and CNR2 in the endometrium, suggesting possible autoinduction/auto-regulation of CNR expression. Optimal cannabinoid signaling

Download English Version:

<https://daneshyari.com/en/article/8626392>

Download Persian Version:

<https://daneshyari.com/article/8626392>

[Daneshyari.com](https://daneshyari.com)