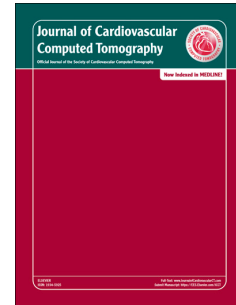


# Accepted Manuscript

Coronary manifestations of Kawasaki Disease in computed tomography coronary angiography

Yong Geng Goh, Ching Ching Ong, Grace Tan, Chong Ri Liang, Sanah Merchant Soomar, Chee Wen Terence Lim, Swee Chye Quek, Li San Lynette Teo



PII: S1934-5925(17)30261-7

DOI: [10.1016/j.jcct.2017.12.003](https://doi.org/10.1016/j.jcct.2017.12.003)

Reference: JCCT 1048

To appear in: *Journal of Cardiovascular Computed Tomography*

Received Date: 30 November 2017

Accepted Date: 10 December 2017

Please cite this article as: Goh YG, Ong CC, Tan G, Liang CR, Soomar SM, Terence Lim CW, Quek SC, Teo LSL, Coronary manifestations of Kawasaki Disease in computed tomography coronary angiography, *Journal of Cardiovascular Computed Tomography* (2018), doi: 10.1016/j.jcct.2017.12.003.

This is a PDF file of an unedited manuscript that has been accepted for publication. As a service to our customers we are providing this early version of the manuscript. The manuscript will undergo copyediting, typesetting, and review of the resulting proof before it is published in its final form. Please note that during the production process errors may be discovered which could affect the content, and all legal disclaimers that apply to the journal pertain.

**TITLE: Coronary Manifestations of Kawasaki Disease in Computed Tomography  
Coronary Angiography**

**Short Title: Coronary CTA for Kawasaki Disease**

Goh Yong Geng<sup>1</sup> MBChB, FRCR, MMed, Ong Ching Ching<sup>1</sup> MBChB, FRCR, MMed, Grace Tan<sup>1</sup> BSc, Liang Chong Ri<sup>1</sup> MHSc, Sanah Merchant Soomar<sup>2</sup> MBBS, MD Pediatrics, FAAP, Terence Lim Chee Wen<sup>2</sup> MBBS, MMed, MRCPCH, Quek Swee Chye<sup>2</sup> MBBS, MMed, MD, DCH, FAMS, FRCPCH, FACC, Teo Li San Lynette<sup>1\*</sup> MBChB, FRCR, MMed, FAMS, EBCR

<sup>1\*</sup>*Department of Diagnostic Imaging, National University Hospital (NUH), 5 Lower Kent Ridge Road, Singapore 119074*

<sup>2</sup>*Division of Paediatric Cardiology, Khoo Teck Puat-National University Children's Medical Institution National University Hospital (NUH), 5 Lower Kent Ridge Road, Singapore 119074,*

*\*To whom correspondence should be addressed. Phone: +65-67726918.*

*E-mail: [lynette\\_ls\\_teo@nuhs.edu.sg](mailto:lynette_ls_teo@nuhs.edu.sg)*

CONFLICTS OF INTERESTS: NIL

Download English Version:

<https://daneshyari.com/en/article/8668152>

Download Persian Version:

<https://daneshyari.com/article/8668152>

[Daneshyari.com](https://daneshyari.com)