

# Accepted Manuscript

Letter to the Editor

Reply to “Clinical Practice Guidelines or Clinical Research Guidelines?”

Riitta Hari, Sylvain Baillet, Gareth Barnes, Nina Forss, Joachim Gross, Matti Hämäläinen, Ole Jensen, Ryusuke Kakigi, François Mauguière, Nobukazu Nakasato, Aina Puce, Gian-Luca Romani, Alfons Schnitzler, Samu Taulu

PII: S1388-2457(18)31138-6  
DOI: <https://doi.org/10.1016/j.clinph.2018.06.016>  
Reference: CLINPH 2008581

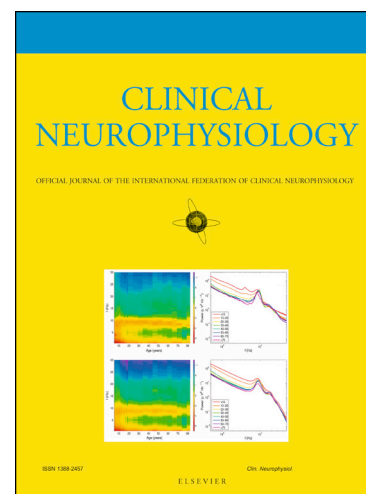
To appear in: *Clinical Neurophysiology*

Received Date: 21 June 2018

Accepted Date: 24 June 2018

Please cite this article as: Hari, R., Baillet, S., Barnes, G., Forss, N., Gross, J., Hämäläinen, M., Jensen, O., Kakigi, R., Mauguière, F., Nakasato, N., Puce, A., Romani, G-L., Schnitzler, A., Taulu, S., Reply to “Clinical Practice Guidelines or Clinical Research Guidelines?”, *Clinical Neurophysiology* (2018), doi: <https://doi.org/10.1016/j.clinph.2018.06.016>

This is a PDF file of an unedited manuscript that has been accepted for publication. As a service to our customers we are providing this early version of the manuscript. The manuscript will undergo copyediting, typesetting, and review of the resulting proof before it is published in its final form. Please note that during the production process errors may be discovered which could affect the content, and all legal disclaimers that apply to the journal pertain.



**Reply to “Clinical Practice Guidelines or Clinical Research Guidelines?”**

- \* Riitta Hari, MD PhD, clinical neurophysiologist, Professor of Systems Neuroscience and Human Brain Imaging (emer.), Aalto University, Helsinki, Finland; [riitta.hari@aalto.fi](mailto:riitta.hari@aalto.fi)
- Sylvain Baillet, PhD, physicist, Professor of Neurology and Neurosurgery, Biomedical Engineering and Computer Science, Montreal Neurological Institute, McGill University, Montreal, QC, Canada; [sylvain.baillet@mcgill.ca](mailto:sylvain.baillet@mcgill.ca)
- Gareth Barnes, PhD, engineer, Professor and Head of MEG, Wellcome Centre for Human Neuroimaging, University College of London, London, UK; [g.barnes@ucl.ac.uk](mailto:g.barnes@ucl.ac.uk)
- Nina Forss, MD PhD, neurologist, Adjunct Professor and Head of Department of Neurology, Helsinki University Hospital, Helsinki, Finland; [nina.forss@hus.fi](mailto:nina.forss@hus.fi)
- Joachim Gross, PhD, physicist, Professor and Director of Institute for Biomagnetism and Biosignalanalysis, University of Münster, Germany; [joachim.gross@uni-muenster.de](mailto:joachim.gross@uni-muenster.de)
- Matti Hämäläinen, PhD, physicist, Professor of Radiology, Harvard Medical School and Massachusetts General Hospital, Boston, MA, USA; [msh@nmr.mgh.harvard.edu](mailto:msh@nmr.mgh.harvard.edu)
- Ole Jensen, PhD, engineer and neuroscientist, Professor in Translational Neuroscience, Centre for Human Brain Health, University of Birmingham, Birmingham, UK; [o.jensen@bham.ac.uk](mailto:o.jensen@bham.ac.uk)
- Ryusuke Kakigi, MD PhD, neurologist and clinical neurophysiologist, Professor of Integrative Physiology, National Institute of Physiological Sciences, Okazaki, Japan; [kakigi@nips.ac.jp](mailto:kakigi@nips.ac.jp)
- François Mauguière, MD PhD, neurologist, Professor of Neurology (emer.), Neurological Hospital & University of Lyon, Lyon, France; [Francois.Mauguiere@univ-lyon1.fr](mailto:Francois.Mauguiere@univ-lyon1.fr)
- Nobukazu Nakasato, MD PhD, neurosurgeon and epileptologist, Professor and Chair, Department of Epileptology, Tohoku University, Sendai, Japan; [nkst@med.tohoku.ac.jp](mailto:nkst@med.tohoku.ac.jp)
- Aina Puce, PhD, biophysicist and neuroscientist, Eleanor Cox Riggs Professor, Psychological & Brain Sciences, Indiana University, Bloomington, IN, USA; [ainapuce@gmail.com](mailto:ainapuce@gmail.com)
- Gian-Luca Romani, PhD, physicist, Professor and Director of the Institute for Advanced Biomedical Technologies, Università degli Studi G. D'Annunzio, Chieti, Italy; [gianluca.romani@unich.it](mailto:gianluca.romani@unich.it)
- Alfons Schnitzler, MD PhD, neurologist, Professor of Clinical Neuroscience and Neurology, Heinrich-Heine-University, Düsseldorf, Germany; [SchnitzA@med.uni-duesseldorf.de](mailto:SchnitzA@med.uni-duesseldorf.de)
- Samu Taulu, PhD, physicist, Research Associate Professor in Physics and Director of the I-LABS MEG Brain Imaging Center, University of Washington, Seattle, WA, USA; [staulu@uw.edu](mailto:staulu@uw.edu)

**\* Corresponding author:**

Riitta Hari

Department of Art, Aalto University, PO Box 31000, 00076 Aalto Finland

[riitta.hari@aalto.fi](mailto:riitta.hari@aalto.fi)

Download English Version:

<https://daneshyari.com/en/article/8682179>

Download Persian Version:

<https://daneshyari.com/article/8682179>

[Daneshyari.com](https://daneshyari.com)