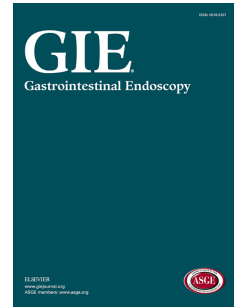


Accepted Manuscript

Implementation of a systematic culturing program to monitor efficacy of endoscope reprocessing: outcomes and costs

Gene K. Ma, David A. Pegues, Michael L. Kochman, Kevin Alby, Neil O. Fishman, Marianne Saunders, Carolyn Grous, Daniel T. Dempsey, Gregory G. Ginsberg



PII: S0016-5107(17)31883-7

DOI: [10.1016/j.gie.2017.05.001](https://doi.org/10.1016/j.gie.2017.05.001)

Reference: YMGE 10563

To appear in: *Gastrointestinal Endoscopy*

Received Date: 23 December 2016

Accepted Date: 1 May 2017

Please cite this article as: Ma GK, Pegues DA, Kochman ML, Alby K, Fishman NO, Saunders M, Grous C, Dempsey DT, Ginsberg GG, Implementation of a systematic culturing program to monitor efficacy of endoscope reprocessing: outcomes and costs, *Gastrointestinal Endoscopy* (2017), doi: 10.1016/j.gie.2017.05.001.

This is a PDF file of an unedited manuscript that has been accepted for publication. As a service to our customers we are providing this early version of the manuscript. The manuscript will undergo copyediting, typesetting, and review of the resulting proof before it is published in its final form. Please note that during the production process errors may be discovered which could affect the content, and all legal disclaimers that apply to the journal pertain.

Implementation of a systematic culturing program to monitor efficacy of endoscope reprocessing: outcomes and costs

Gene K. Ma,¹ David A. Pegues,² Michael L. Kochman,¹ Kevin Alby,³ Neil O. Fishman,² Marianne Saunders,⁴ Carolyn Grous,⁴ Daniel T. Dempsey,⁴ Gregory G. Ginsberg¹

¹Gastroenterology Division, Department of Medicine, University of Pennsylvania Perelman School of Medicine, Philadelphia, PA

²Infectious Diseases Division, Department of Medicine, University of Pennsylvania Perelman School of Medicine, Philadelphia, PA

³Department of Pathology and Laboratory Medicine, University of Pennsylvania Perelman School of Medicine, Philadelphia, PA

⁴Perioperative Services, Hospital of the University of Pennsylvania, Philadelphia, PA

Corresponding author:

Gene K. Ma, MD

3400 Civic Center Boulevard

PCAM South Pavilion, 7th Floor

Philadelphia, PA 19104

Email: gene.ma@uphs.upenn.edu

Phone: 267-324-7651

Author Contributions:

Gene K. Ma: Conception and design, analysis and interpretation of data, drafting of the article, critical revision, final approval of article

David A. Pegues: Analysis and interpretation of data, critical revision, final approval of article

Michael L. Kochman: Conception and design, analysis and interpretation of data, critical revision, final approval of article

Kevin Alby: Analysis and interpretation of data, critical revision, final approval of article

Neil O. Fishman: Analysis and interpretation of data, critical revision, final approval of article

Marianne Saunders: Analysis and interpretation of data, critical revision, final approval of article

Carolyn Grous: Analysis and interpretation of data, critical revision, final approval of article

Daniel T. Dempsey: Analysis and interpretation of data, critical revision, final approval of article

Gregory G. Ginsberg: Conception and design, analysis and interpretation of data, drafting of the article, critical revision, final approval of article

Download English Version:

<https://daneshyari.com/en/article/8728404>

Download Persian Version:

<https://daneshyari.com/article/8728404>

[Daneshyari.com](https://daneshyari.com)