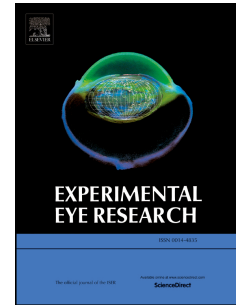


Accepted Manuscript

Epitope mapping of commercial antibodies that detect myocilin

Athéna C. Patterson-Orazem, Shannon E. Hill, Michael P. Fautsch, Raquel L. Lieberman



PII: S0014-4835(18)30117-9

DOI: [10.1016/j.exer.2018.05.002](https://doi.org/10.1016/j.exer.2018.05.002)

Reference: YEXER 7359

To appear in: *Experimental Eye Research*

Received Date: 13 February 2018

Revised Date: 17 April 2018

Accepted Date: 5 May 2018

Please cite this article as: Patterson-Orazem, Athé.C., Hill, S.E., Fautsch, M.P., Lieberman, R.L., Epitope mapping of commercial antibodies that detect myocilin, *Experimental Eye Research* (2018), doi: 10.1016/j.exer.2018.05.002.

This is a PDF file of an unedited manuscript that has been accepted for publication. As a service to our customers we are providing this early version of the manuscript. The manuscript will undergo copyediting, typesetting, and review of the resulting proof before it is published in its final form. Please note that during the production process errors may be discovered which could affect the content, and all legal disclaimers that apply to the journal pertain.

Epitope mapping of commercial antibodies that detect myocilin

Athéna C. Patterson-Orazem¹, Shannon E. Hill¹, Michael P. Fautsch², Raquel L. Lieberman^{1*}

¹School of Chemistry & Biochemistry, Georgia Institute of Technology, Atlanta, GA 30332-0400

²School of Biomedical Engineering, Mayo Clinic Rochester, MN

*Corresponding author, Raquel.lieberman@chemistry.gatech.edu

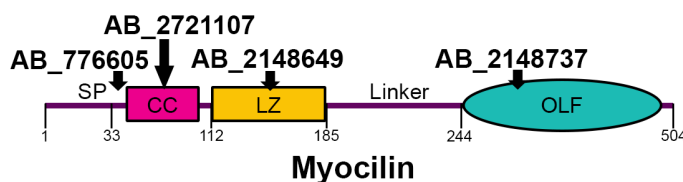
Highlights

*Available commercial myocilin antibodies are not well validated

*Recombinant myocilin constructs can identify epitopes recognized by commercial antibodies

*Available antibodies recognize the three major structural regions of myocilin

Graphical Abstract



Download English Version:

<https://daneshyari.com/en/article/8791955>

Download Persian Version:

<https://daneshyari.com/article/8791955>

[Daneshyari.com](https://daneshyari.com)