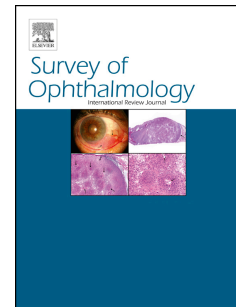


Accepted Manuscript

The Iridocorneal Endothelial Syndrome

Luis Silva, MD, Ahmad Najafi, MD, Yanin Suwan, MD, Chaiwat Teekhasaenee, MD,
Robert Ritch, MD



PII: S0039-6257(17)30112-1

DOI: [10.1016/j.survophthal.2018.01.001](https://doi.org/10.1016/j.survophthal.2018.01.001)

Reference: SOP 6780

To appear in: *Survey of Ophthalmology*

Received Date: 9 April 2017

Revised Date: 19 December 2017

Accepted Date: 8 January 2018

Please cite this article as: Silva L, Najafi A, Suwan Y, Teekhasaenee C, Ritch R, The Iridocorneal Endothelial Syndrome, *Survey of Ophthalmology* (2018), doi: 10.1016/j.survophthal.2018.01.001.

This is a PDF file of an unedited manuscript that has been accepted for publication. As a service to our customers we are providing this early version of the manuscript. The manuscript will undergo copyediting, typesetting, and review of the resulting proof before it is published in its final form. Please note that during the production process errors may be discovered which could affect the content, and all legal disclaimers that apply to the journal pertain.

The Iridocorneal Endothelial Syndrome

Luis Silva, MD^a; Ahmad Najafi, MD^a, Yanin Suwan, MD^{a,b}; Chaiwat Teekhasaenee, MD^b; Robert Ritch, MD^a

^aEinhorn Clinical Research Center, The New York Eye and Ear Infirmary of Mount Sinai. 310 East 14th Street. South building. Suite 304. New York, NY 10003.

^bDepartment of Ophthalmology, Ramathibodi Hospital, Mahidol University, Bangkok, Thailand.

Corresponding author: Luis Silva, MD. Email: lsilva@nyee.edu. Address: 310 E 14th Street. South building. Suite 304. New York, NY 10003.

Conflicts of interest: None.

Supported by the Joseph Cohen Research Fund of the New York Eye and Ear Infirmary of Mount Sinai

Keywords: Glaucoma; Chandler syndrome; progressive iris atrophy; Cogan-Reese syndrome; corneal edema; keratoplasty.

Outline

Abstract

1. Introduction

2. Chandler syndrome

2.1 Clinical findings, presentation, features, specular microscopy, confocal microscopy, UBM.

2.2 Differential diagnosis

3. Progressive iris atrophy

3.1 Clinical findings, presentation, features

3.2 Differential diagnosis

4. Cogan-Reese syndrome

4.1 Clinical findings, presentation, features

4.2 Differential diagnosis

5. Histopathology of ICE syndrome

6. Epidemiology/Associations

7. Etiology

Download English Version:

<https://daneshyari.com/en/article/8795166>

Download Persian Version:

<https://daneshyari.com/article/8795166>

[Daneshyari.com](https://daneshyari.com)