



Contents lists available at ScienceDirect

International Journal of Surgery Case Reports

journal homepage: www.casereports.com

An unusual localization of seven months delayed pelvic lymphocele following radical retropubic prostatectomy: Case report and literature review

Berk Hazır^a, Hakan Bahadır Haberal^{a,*}, Devrim Akıncı^b, Bülent Akdoğan^a

^a Department of Urology, Hacettepe University School of Medicine, Ankara, Turkey

^b Department of Radiology, Hacettepe University School of Medicine, Ankara, Turkey

ARTICLE INFO

Article history:

Received 16 January 2018

Received in revised form 26 January 2018

Accepted 22 February 2018

Keywords:

Radical retropubic prostatectomy

Pelvic lymphocele

Percutaneous drainage

Prostate cancer

Case-report

ABSTRACT

INTRODUCTION: A pelvic lymphocele is a collection of lymphatic fluid that develops after extensive lymphadenectomies in surgeries such as urological malignancies or renal transplantation. Pelvic lymphoceles may cause complications such as fever, abdominal pain, leg swelling, genital swelling and flank pain. This report summarizes the management of a pelvic lymphocele after open radical retropubic prostatectomy with bilateral lymphadenectomy.

PRESENTATION OF CASE: Herein, we present a case in which a pelvic lymphocele developed seven months post-radical open retropubic prostatectomy and through this patient we discussed the lymphocele following radical prostatectomy. The pelvic lymphocele occurred along the sciatic nerve from the sciatica foramen to the intergluteal muscles. The patient was treated with three drainage catheters. This localization is an atypical and unusual for lymphocele after radical retropubic prostatectomy.

DISCUSSION: Lymphocele formation that leads to major complications after radical prostatectomy is rare. Lymphocele formation is most commonly seen in the early postoperative period, but it should be considered in patients with fever, abdominal pain or leg swelling during the late postoperative period. Lymphocele formation was the most common cause of hospital readmission after radical prostatectomy.

CONCLUSION: Lymphocele formation can be seen in atypical regions and can lead to unexpected complications after radical prostatectomy. Therefore, it should be brought to mind when complaints such as fever and lower extremity swelling occurred in patients underwent extensive lymph node dissection. Surgical treatment options are available, but percutaneous interventions can also be used.

© 2018 Published by Elsevier Ltd on behalf of IJS Publishing Group Ltd. This is an open access article under the CC BY-NC-ND license (<http://creativecommons.org/licenses/by-nc-nd/4.0/>).

1. Introduction

A pelvic lymphocele is a collection of lymphatic fluid that develops mainly after urological or gynecologic malignancy surgeries or renal transplantation. It usually occurs after extensive lymphadenectomies [1]. Pelvic lymph node dissection is the most efficient and dependable method for the detection of pelvic lymph node metastasis in prostate cancer. Increasing the extent of the lymph node dissection leads to more accurate staging of the cancer. Additionally, lymphadenectomy may be an effective treatment for especially limited lymph node metastatic disease. One of the

strongest predictors for cancer-specific survival in prostate cancer is lymph node metastasis status [2]. Lymphocele formation increases the risk of fever and thromboembolic events in patients after radical prostatectomy [3,4]. Herein, we present a case in which pelvic lymphocele developed at an unusual localization seven months post-radical retropubic prostatectomy. Percutaneous drainage catheters were used for treatment. This work has been reported in line with the SCARE criteria [5].

2. Case presentation

Initially, a 71-year-old male patient was admitted to the hospital for an elevated prostate specific antigen (PSA) of 47 ng/ml. His past medical history was significant for diabetes, hypertension and coronary artery disease. His body mass index was 26.1. The patient was evaluated with transrectal ultrasonography and a prostate biopsy. He was diagnosed with a Gleason score of 7 (4 + 3) adenocarcinoma of the prostate. Bone scintigraphy and thoracoabdominal computed tomography (CT) were negative. The patient underwent open non-nerve-sparing retropubic radical prostatectomy with bilateral

Abbreviations: PSA, prostate specific antigen; CT, computed tomography; IV, intravenous; MRI, magnetic resonance imaging.

* Corresponding author at: Meksika Caddesi Buketevler Sitesi, D Blok Daire No: 16 Ümitköy, Çankaya, 06810, Ankara, Turkey.

E-mail addresses: berkhazir@hacettepe.edu.tr (B. Hazır),

bhaberal@hacettepe.edu.tr (H.B. Haberal), dakinci@hacettepe.edu.tr (D. Akıncı),

bulent.akdogan@hacettepe.edu.tr (B. Akdoğan).

<https://doi.org/10.1016/j.ijscr.2018.02.036>

2210-2612/© 2018 Published by Elsevier Ltd on behalf of IJS Publishing Group Ltd. This is an open access article under the CC BY-NC-ND license (<http://creativecommons.org/licenses/by-nc-nd/4.0/>).

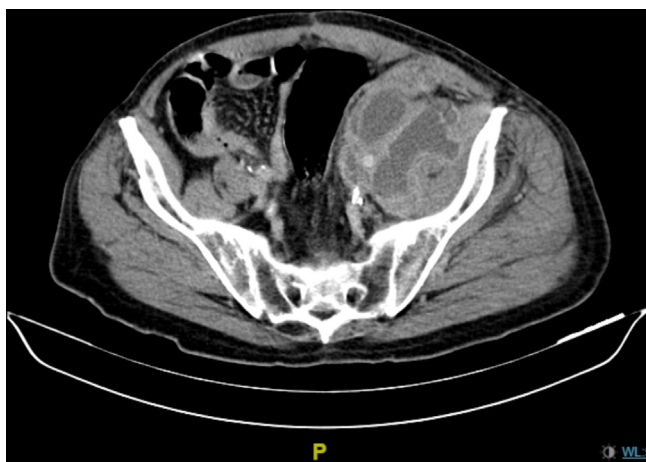


Fig. 1. Initial cystic mass with septation in the left iliac fossa on abdominal CT.

pelvic lymphadenectomy. All lymph nodes in the obturator area and around the internal and external iliac arteries were excised to the common iliac artery. Metallic clips and monopolar cautery was used for sealing the lymphatic vessels. A final pathology report for a radical prostatectomy specimen revealed a Gleason of score 9 (4+5) adenocarcinoma, and 19 lymph nodes were negative. The postoperative 1st day sump drain was removed, and the patient was discharged without issue the following day. The patient was not prescribed low-molecular-weight heparin in the postoperative period.

Seven months later, the patient was admitted to the emergency department with fever and left side abdominal pain. The thoracoabdominal CT revealed an 11 × 7 cm infected cystic mass with septations (Fig. 1). This cystic mass was compatible with a lymphocele. The patient was hospitalized and underwent drainage catheter placement under USG control. He received 2 × 500 mg intravenous (IV) Metronidazole for 5 days and 2 × 1000 mg IV Ceftriaxone for 6 days. After that, the drainage catheter was removed, and the patient continued to receive IV Ceftriaxone for 5 more days.

The patient's fever did not improve, and his left hip and leg began to swell. A thoracoabdominal CT was performed again due to the swelling. The new CT revealed that the initial cystic mass had disappeared, but there was a new cystic collection beginning from the sciatica foramen extending into the intergluteal muscles; which was not present in the first CT. Due to the CT findings, the patient underwent magnetic resonance imaging (MRI) of the left hip. MRI revealed cystic collection along the sciatic nerve from the hip to the thigh (Fig. 2). Three drainage catheters were placed under



Fig. 3. Three drainage catheters were placed into the left calf and intergluteal muscle.

USG control, two into the left calf and the other into the intergluteal muscle and 2 × 500 mg IV Tigecycline was started (Fig. 3). *Streptococcus agalactiae* was isolated from the cultures of the fluid collected through the drainage catheters. Eleven days later, the two catheters were removed, and seven days after this, the other catheter was removed and Tigecycline was stopped. The patient was discharged without any complaints. The patient is now under follow-up without any trouble.

3. Discussion

Lymphocele formation after radical retropubic prostatectomy is seen in up to 61% of patients underwent open radical retropubic prostatectomy [6], but the rate of symptomatic lymphocele is, depending on the series 4–5% [3,7]. The first diagnostic method is ultrasonography. Anechoic cystic structures seen near the major vessels should bring lymphocele to mind. On CT, hypodense lesions can be seen near the surgical clips [1].

The main complaints of patients are fever, abdominal pain and lower extremity pain [3]. Our patient was admitted to the emergency department with fever and abdominal pain, but lower extremity pain also developed during hospitalization. The localization of lymphocele developed in our patient was not frequent.

It has been shown that almost all of the early postoperative complications in patients undergoing radical prostatectomy and pelvic lymphadenectomy are associated with significant lymphocele formation and lymphocele sequelae. More than half of these patients

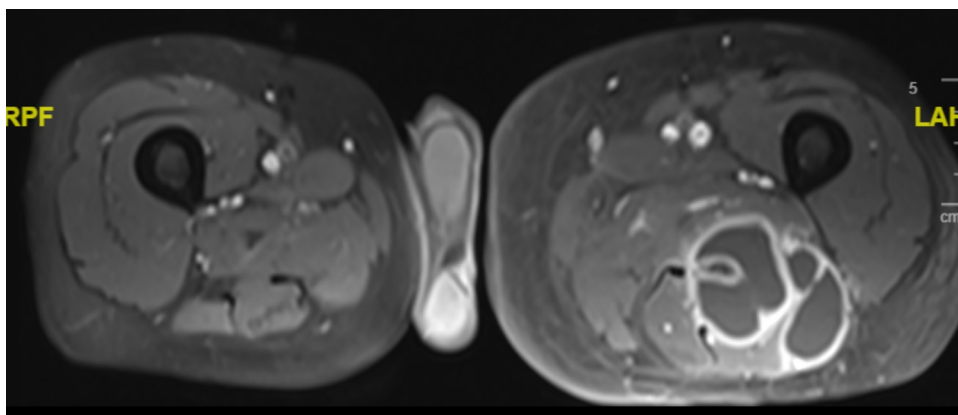


Fig. 2. Cystic mass in the left thigh on MRI of the left hip.

Download English Version:

<https://daneshyari.com/en/article/8832821>

Download Persian Version:

<https://daneshyari.com/article/8832821>

[Daneshyari.com](https://daneshyari.com)