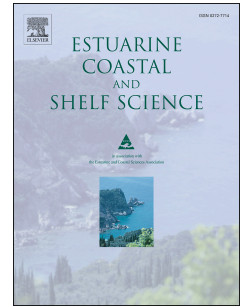


Accepted Manuscript

Like night and day: Reversals of thermal gradients across ghost crab burrows and their implications for thermal ecology

Gregory S. Watson, Emily A. Gregory, Charmaine Johnstone, Manuel Berlino, David W. Green, Nicola R. Peterson, Jolanta A. Watson, David S. Schoeman



PII: S0272-7714(18)30044-1

DOI: [10.1016/j.ecss.2018.01.023](https://doi.org/10.1016/j.ecss.2018.01.023)

Reference: YECSS 5737

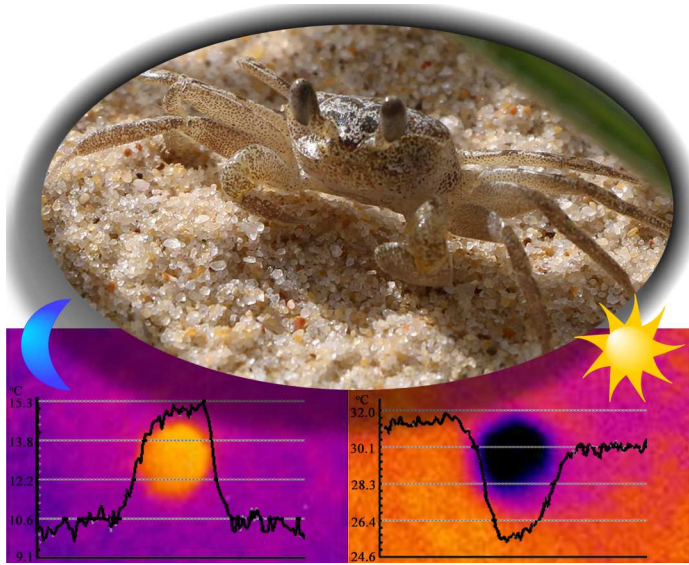
To appear in: *Estuarine, Coastal and Shelf Science*

Received Date: 20 January 2018

Accepted Date: 23 January 2018

Please cite this article as: Watson, G.S., Gregory, E.A., Johnstone, C., Berlino, M., Green, D.W., Peterson, N.R., Watson, J.A., Schoeman, D.S., Like night and day: Reversals of thermal gradients across ghost crab burrows and their implications for thermal ecology, *Estuarine, Coastal and Shelf Science* (2018), doi: 10.1016/j.ecss.2018.01.023.

This is a PDF file of an unedited manuscript that has been accepted for publication. As a service to our customers we are providing this early version of the manuscript. The manuscript will undergo copyediting, typesetting, and review of the resulting proof before it is published in its final form. Please note that during the production process errors may be discovered which could affect the content, and all legal disclaimers that apply to the journal pertain.



ACCEPTED MANUSCRIPT

Download English Version:

<https://daneshyari.com/en/article/8884977>

Download Persian Version:

<https://daneshyari.com/article/8884977>

[Daneshyari.com](https://daneshyari.com)