

# Transapical endovascular repair of iatrogenic type A aortic dissection

Sangmin Kim, MD,<sup>a,b,c</sup> Cristobal Ducaud, BS,<sup>b</sup> Raul E. Herrera, MD,<sup>a</sup> Nibert Moreno, MD,<sup>d</sup> Juan C. Zavallos, MD,<sup>b</sup> and Barry T. Katzen, MD,<sup>a</sup> *Miami, Fla; and Cheongju, Republic of Korea*

## ABSTRACT

Intraoperative iatrogenic type A aortic dissection is a rare but known complication of cardiac surgery, with an incidence of 0.06% to 0.23%. Results are frequently catastrophic. The endovascular approach has made advances as an alternative treatment for aortic disease. However, the apical approach for transcatheter thoracic endovascular aortic repair is not well known. We present a 5-year follow-up of a case of iatrogenic type A aortic dissection after minimally invasive mitral valve repair successfully resolved by medical stabilization and subsequent transapical thoracic endovascular aortic repair. (*J Vasc Surg Cases and Innovative Techniques* 2018;4:257-61.)

**Keywords:** Aortic dissection; Endograft; Transapical

Intraoperative iatrogenic aortic dissection is a rare but potentially catastrophic complication of open heart surgery, occurring in 0.06% of cardiac operations and resulting in 48% operative mortality.<sup>1,2</sup> Any aortic or peripheral vessel manipulation during cardiac surgery could be a source of dissection, including femoral cannulation, cross-clamps, proximal anastomotic sites, and even intra-aortic balloon pumps. The endovascular approach has made advances as an alternative treatment for aortic disease. The apex of the left ventricle (LV) has gained popularity for introduction during transcatheter aortic valve implantation for overcoming limitations of the conventional femoral approach and supra-aortic approach, either a carotid or axillary artery.<sup>3-6</sup> However, the apical approach for transcatheter thoracic endovascular aortic repair (TEVAR) is not well known. The patient consented to publication of this report.

## CASE REPORT

A 66-year-old woman with hypertension was admitted with shortness of breath and dizziness secondary to severe mitral valve regurgitation with P2 prolapse on March 30, 2011. She

had been stable for the preceding 3 years, and surgical valve repair was planned because of the development of these new symptoms. Minimally invasive mitral valve repair was performed with antegrade cardioplegia on April 1, 2011. Before closure of the skin, transesophageal echocardiography (TEE) revealed good performance of the repaired mitral valve without regurgitation but also showed a small, localized aortic dissection in the ascending aorta without aortic insufficiency. Because of her stable hemodynamics and localized flap, the decision was made for conservative treatment. Three days later, computed tomography (CT) of the thoracic aorta (TA) showed a type A aortic dissection at the sinotubular junction extending to at least the midabdomen, where the study was completed. The dissection also extended into the innominate and left renal artery (LRA), with the LRA supplied by both the true and false lumens. Although there was a possibility for the disease to go on, the patient did not want any further surgical treatment then. She remained stable with medical management and was discharged after 2 weeks.

One month and 3 months later, CT of the thoracoabdominal aorta was performed in an outpatient setting and found no significant change of the type A aortic dissection but additionally identified extension into the aortoiliac bifurcation, probably involving the proximal aspect of the left common iliac artery (LCIA; [Fig 1](#)). The false lumen diameter appeared unchanged. During the postoperative period, she complained of some fatigue on ambulation and left leg claudication. Because of extension of dissection with symptoms and refusal of additional surgery, it was decided to proceed with transapical TEVAR (TaTEVAR). Informed consent was obtained, and we were asked to proceed with the procedure. The TaTEVAR was performed on August 25, 2011 ([Fig 2](#)). After preparation of both groins for vascular access and the level of the fifth intercostal area for a left anterior thoracotomy, a TEE probe was placed. The cardiothoracic team exposed the pericardium and apex of the LV through a left anterior thoracotomy. A double purse-string suture was placed at the dimple of the LV. The LV was then punctured with a 0.018-inch single-wall needle by the interventional radiology team. A super-stiff wire was advanced into the proximal descending TA. The

---

From the Division of Interventional Radiology,<sup>a</sup> and Division of Cardiothoracic Surgery,<sup>d</sup> Miami Cardiac and Vascular Institute, Miami; the Department of Medical and Population Health Sciences Research, Herbert Wertheim College of Medicine, Florida International University, Miami<sup>b</sup>; and the Regional Cardiovascular Center, Division of Cardiology, Department of Internal Medicine, Chungbuk National University Hospital, Cheongju.<sup>c</sup>

Author conflict of interest: none.

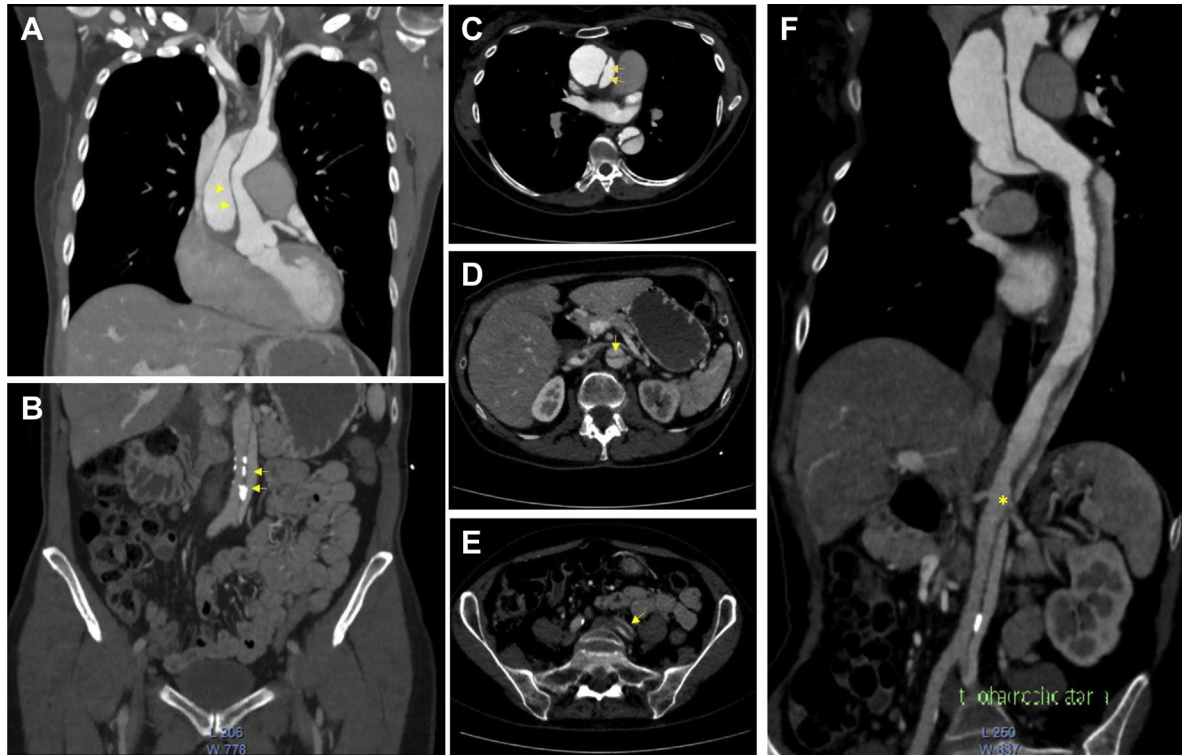
Correspondence: Barry T. Katzen, MD, Division of Interventional Radiology, Miami Cardiac and Vascular Institute, 8900 N Kendall Dr, Miami, FL 33176 (e-mail: [barryk@baptisthealth.net](mailto:barryk@baptisthealth.net)).

The editors and reviewers of this article have no relevant financial relationships to disclose per the Journal policy that requires reviewers to decline review of any manuscript for which they may have a conflict of interest.

2468-4287

© 2018 The Authors. Published by Elsevier Inc. on behalf of Society for Vascular Surgery. This is an open access article under the CC BY-NC-ND license (<http://creativecommons.org/licenses/by-nc-nd/4.0/>).

<https://doi.org/10.1016/j.jvscit.2018.05.007>



**Fig 1. A-F,** Computed tomography (CT) showed type A aortic dissection (arrows) arising from the sinotubular junction and extending through the aortic bifurcation into the left common iliac artery (LCIA). **F,** The left kidney was supplied by both the false and true lumens (\*). There was no evidence of associated renal infarct.

surgical team provided the partial closure of the LV with the purse-string suture and dilated the track for the 20F sheath (W. L. Gore & Associates, Flagstaff, Ariz), which was advanced into the LV. Two 32- × 45-mm Gore Excluder cuffs were placed within the proximal TA through the transapical approach to successfully exclude a proximal fenestration between the true and false lumens of the type A dissection (Fig 2, F). The left thoracotomy was closed with good hemostasis. To provide blood flow from the true lumen to the LRA, a 6- × 14-mm Express (Boston Scientific, Marlborough, Mass) stent was deployed in the origin of the LRA (Fig 2, G). The inferior mesenteric artery (IMA) was occluded using 6- × 2-mm Tornado (Cook Medical, Bloomington, Ind) embolization coils to prevent retrograde blood flow into a false lumen and to attempt to completely cure it. Two 8- × 38-mm Atrium covered stents (Maquet, Rastatt, Germany) were sequentially deployed into the abdominal aorta (AA; Fig 2, H). After repeated angiography of the AA, the right groin was closed with a percutaneous closure device. There was no evidence of immediate complications. Three days later, postprocedure CT demonstrated two successfully placed stents within the ascending TA with exclusion of the type A dissection and thrombosis of the intrathoracic false lumen (Fig 3). There was persistent opacification of the false lumen from just above the level of the celiac artery to the LCIA, although it was significantly decreased in comparison to pre-TEVAR examination. CT also demonstrated a thrombosed IMA and a widely patent stent from the true lumen to the LRA. She was discharged after a 1-week hospital course.

One year later, CT showed no evidence of residual dissection and status post placement of stent graft devices in the AA with obliteration of the previously opacified false lumen without endoleak (Fig 4). Involvement of the LCIA was no longer seen, the LRA stent was patent, and the IMA remained occluded status post coil embolization. The last follow-up CT scan, 4 years postoperatively, also showed full resolution of the dissection without complication. She had good performance without related symptoms at her most recent outpatient visit in February 2018.

## DISCUSSION

Manipulation and cross-clamping of the ascending aorta with antegrade cardioplegia might be implicated in this case. When localized dissection of the ascending aorta was found on intraoperative TEE, the risk of sequential surgical treatment was considered along with the risk of iatrogenic type A aortic dissection. For conventional surgical treatment of this complication, the possibility of superimposed dissection, difficulty in obtaining alternative access for cardiopulmonary bypass, and, similarly, difficulties with cerebral and myocardial protection related to either dissection-induced malperfusion or the unplanned need for alteration in cannulation site necessitated by the dissection should be considered. Because hemodynamic status was stable during the operation and the intraoperative TEE showed a localized flap, conservative management was decided. Although the aortic dissection

Download English Version:

<https://daneshyari.com/en/article/10130050>

Download Persian Version:

<https://daneshyari.com/article/10130050>

[Daneshyari.com](https://daneshyari.com)