

# Accepted Manuscript

Water extract of indoor dust induces tight junction disruption in normal human corneal epithelial cells

Ping Xiang, Yue Jia, Kun Wang, Meng-Ying Li, Yi-Shu Qin, Rui-Wen He, Peng Gao, Yungen Liu, Xue Liu, Lena Q. Ma



PII: S0269-7491(18)32574-0

DOI: [10.1016/j.envpol.2018.08.085](https://doi.org/10.1016/j.envpol.2018.08.085)

Reference: ENPO 11523

To appear in: *Environmental Pollution*

Received Date: 7 June 2018

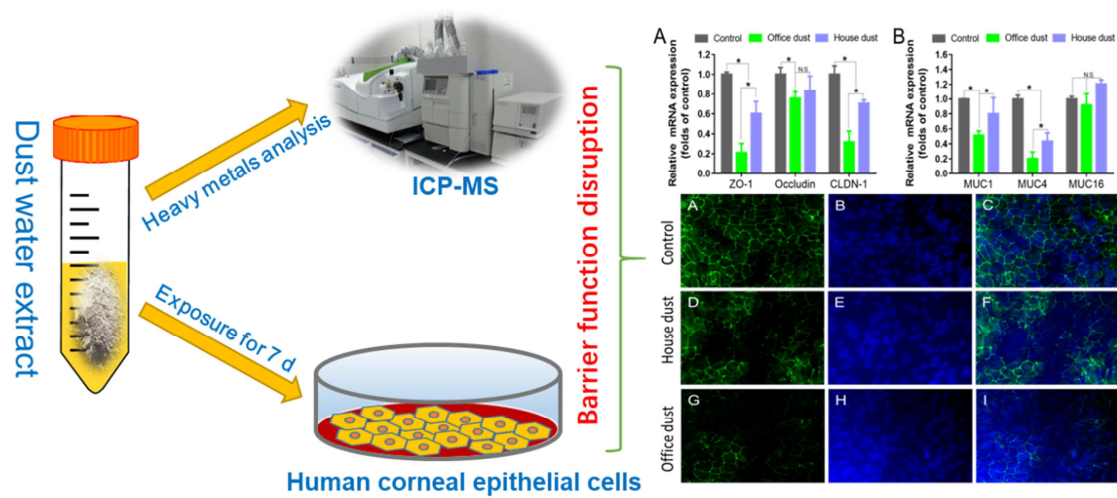
Revised Date: 2 August 2018

Accepted Date: 24 August 2018

Please cite this article as: Xiang, P., Jia, Y., Wang, K., Li, M.-Y., Qin, Y.-S., He, R.-W., Gao, P., Liu, Y., Liu, X., Ma, L.Q., Water extract of indoor dust induces tight junction disruption in normal human corneal epithelial cells, *Environmental Pollution* (2018), doi: 10.1016/j.envpol.2018.08.085.

This is a PDF file of an unedited manuscript that has been accepted for publication. As a service to our customers we are providing this early version of the manuscript. The manuscript will undergo copyediting, typesetting, and review of the resulting proof before it is published in its final form. Please note that during the production process errors may be discovered which could affect the content, and all legal disclaimers that apply to the journal pertain.

## Table of content



Download English Version:

<https://daneshyari.com/en/article/10144649>

Download Persian Version:

<https://daneshyari.com/article/10144649>

[Daneshyari.com](https://daneshyari.com)