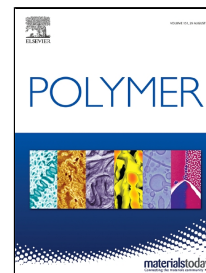


Accepted Manuscript

Unexpected effects of inorganic phosphate glass on crystallization and thermorheological behavior of polyethylene terephthalate



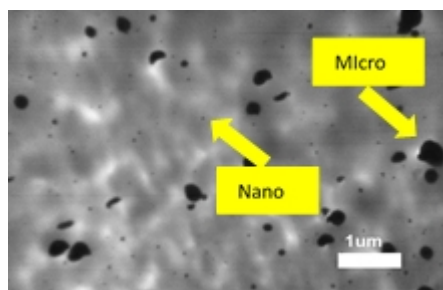
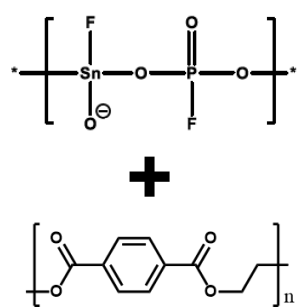
Kyoungtae Kim, Shahab Kashani Rahimi, Todd M. Alam, Eric G. Sorte, Joshua U. Otaigbe

PII: S0032-3861(18)30812-7
DOI: 10.1016/j.polymer.2018.08.066
Reference: JPOL 20873
To appear in: *Polymer*
Received Date: 09 July 2018
Accepted Date: 27 August 2018

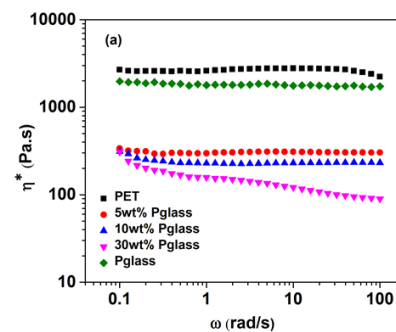
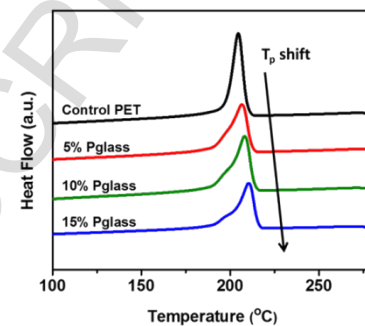
Please cite this article as: Kyoungtae Kim, Shahab Kashani Rahimi, Todd M. Alam, Eric G. Sorte, Joshua U. Otaigbe, Unexpected effects of inorganic phosphate glass on crystallization and thermorheological behavior of polyethylene terephthalate, *Polymer* (2018), doi: 10.1016/j.polymer.2018.08.066

This is a PDF file of an unedited manuscript that has been accepted for publication. As a service to our customers we are providing this early version of the manuscript. The manuscript will undergo copyediting, typesetting, and review of the resulting proof before it is published in its final form. Please note that during the production process errors may be discovered which could affect the content, and all legal disclaimers that apply to the journal pertain.

Graphical abstract



P-glass dispersion in the PET matrix



Download English Version:

<https://daneshyari.com/en/article/10147529>

Download Persian Version:

<https://daneshyari.com/article/10147529>

[Daneshyari.com](https://daneshyari.com)