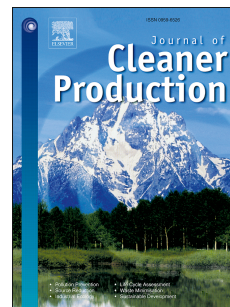


Accepted Manuscript

Novel insight of spatial mass transfer conditions of upflow anaerobic reactor

Zohaib Ur Rehman Afridi, Jing Wu, Zhong Hua Li, Raseduzzman Akand, Zhi Ping Cao, Souhila Poncin, Huai Zhi Li



PII: S0959-6526(18)32734-3

DOI: [10.1016/j.jclepro.2018.09.022](https://doi.org/10.1016/j.jclepro.2018.09.022)

Reference: JCLP 14157

To appear in: *Journal of Cleaner Production*

Received Date: 9 March 2018

Revised Date: 31 August 2018

Accepted Date: 3 September 2018

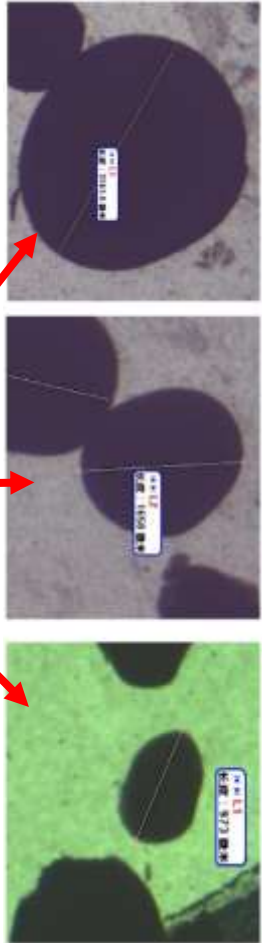
Please cite this article as: Rehman Afridi ZU, Wu J, Li ZH, Akand R, Cao ZP, Poncin S, Li HZ, Novel insight of spatial mass transfer conditions of upflow anaerobic reactor, *Journal of Cleaner Production* (2018), doi: 10.1016/j.jclepro.2018.09.022.

This is a PDF file of an unedited manuscript that has been accepted for publication. As a service to our customers we are providing this early version of the manuscript. The manuscript will undergo copyediting, typesetting, and review of the resulting proof before it is published in its final form. Please note that during the production process errors may be discovered which could affect the content, and all legal disclaimers that apply to the journal pertain.

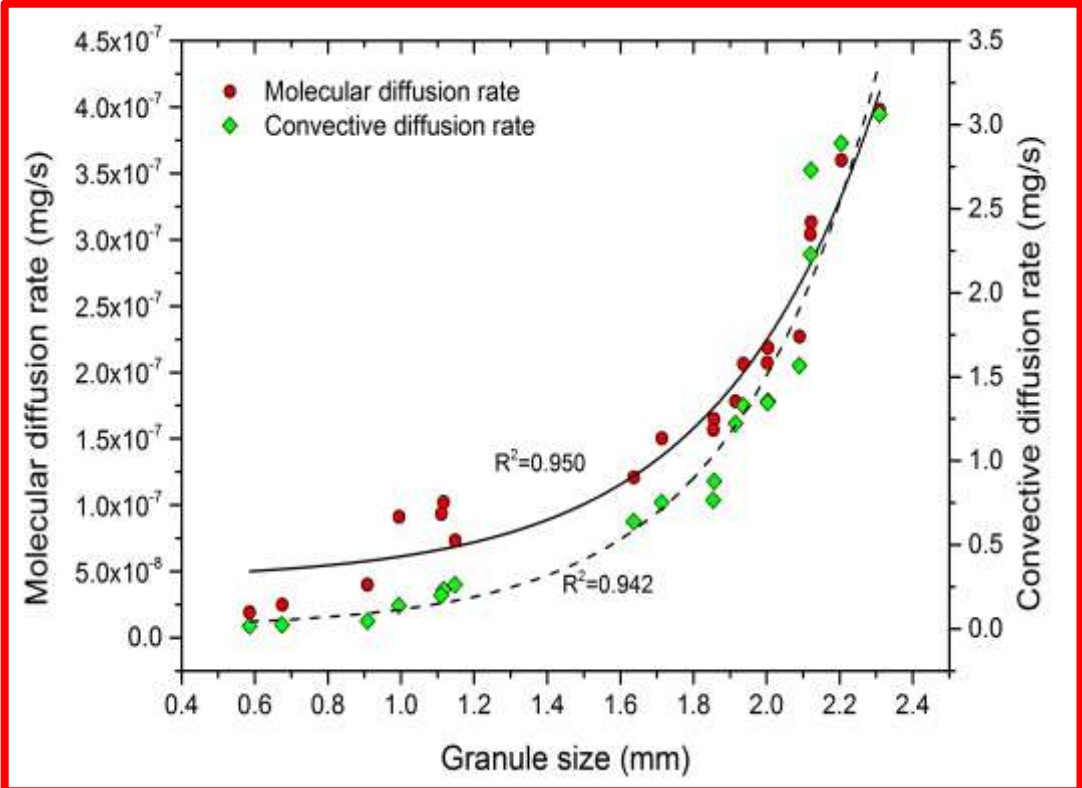
Physical characteristics at each port



Sampling Ports
Port 5: 3.15 m
Port 4: 2.40 m
Port 3: 1.65 m
Port 2: 0.90 m
Port 1: 0.25 m



Convective and molecular Mass transfer



OLR 4.32 OLR 5.70 OLR 6.92 OLR 8.3

Download English Version:

<https://daneshyari.com/en/article/10149199>

Download Persian Version:

<https://daneshyari.com/article/10149199>

[Daneshyari.com](https://daneshyari.com)