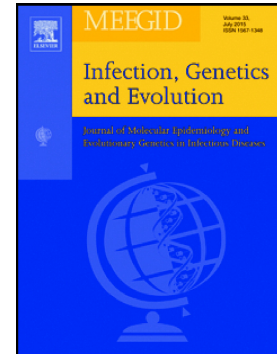


Accepted Manuscript

Genetic characteristics and geographic segregation of *Giardia duodenalis* in dairy cattle from Guangdong Province, southern China

Zhaohui Cui, Luyang Wang, Letian Cao, Mingfei Sun, Nan Liang, Haiyan Wang, Yankai Chang, Xuhui Lin, Linzeng Yu, Rongjun Wang, Sumei Zhang, Changshen Ning, Longxian Zhang



PII: S1567-1348(18)30413-1
DOI: doi:[10.1016/j.meegid.2018.09.019](https://doi.org/10.1016/j.meegid.2018.09.019)
Reference: MEEGID 3660
To appear in: *Infection, Genetics and Evolution*
Received date: 16 June 2018
Revised date: 17 September 2018
Accepted date: 19 September 2018

Please cite this article as: Zhaohui Cui, Luyang Wang, Letian Cao, Mingfei Sun, Nan Liang, Haiyan Wang, Yankai Chang, Xuhui Lin, Linzeng Yu, Rongjun Wang, Sumei Zhang, Changshen Ning, Longxian Zhang , Genetic characteristics and geographic segregation of *Giardia duodenalis* in dairy cattle from Guangdong Province, southern China. Meegid (2018), doi:[10.1016/j.meegid.2018.09.019](https://doi.org/10.1016/j.meegid.2018.09.019)

This is a PDF file of an unedited manuscript that has been accepted for publication. As a service to our customers we are providing this early version of the manuscript. The manuscript will undergo copyediting, typesetting, and review of the resulting proof before it is published in its final form. Please note that during the production process errors may be discovered which could affect the content, and all legal disclaimers that apply to the journal pertain.

Genetic characteristics and geographic segregation of *Giardia duodenalis* in dairy cattle from Guangdong Province, southern China

Zhaohui Cui^{a,b}, Luyang Wang^{a,b}, Letian Cao^{a,b}, Mingfei Sun^d, Nan Liang^c, Haiyan Wang^{a,b}, Yankai Chang^{a,b}, Xuhui Lin^d, Linzeng Yu^d, Rongjun Wang^{a,b}, Sumei Zhang^{a,b}, Changshen Ning^{a,b}, Longxian Zhang^{a,b*}

^a *College of Animal Science and Veterinary Medicine, Henan Agricultural University, Zhengzhou 450002, China*

^b *International Joint Research Laboratory for Zoonotic Diseases of Henan, Zhengzhou, China*

^c *College of Animal Husbandry Engineering, Henan Vocational College of Agriculture, Zhongmu 451450, Henan Province, China*

^d *Institute of Animal Health, Guangdong Academy of Agricultural Sciences, Guangzhou 510640, Guangdong Province, China*

*Corresponding author. Longxian Zhang, College of Animal Science and Veterinary Medicine, Henan Agricultural University, No. 15 Longzihu University Area, Zhengdong New District, Zhengzhou 450046, China

Tel: 86-371-56990163; Fax: 86-371-56990163;

E-mail: zhanglx8999@henau.edu.cn; zhanglx8999@gmail.com

Download English Version:

<https://daneshyari.com/en/article/10212437>

Download Persian Version:

<https://daneshyari.com/article/10212437>

[Daneshyari.com](https://daneshyari.com)