

Accepted Manuscript

Comparison of endoscopic submucosal dissection and surgery for superficial esophageal squamous cell carcinoma: A propensity score-matched analysis

Yang Won Min, Hyuk Lee, Byeong Geun Song, Byung-Hoon Min, Hong Kwan Kim, Yong Soo Choi, Jun Haeng Lee, Na-Young Hwang, Keumhee C. Carriere, Poong-Lyul Rhee, Jae J. Kim, Jae Ill Zo, Young Mog Shim

PII: S0016-5107(18)32671-3

DOI: [10.1016/j.gie.2018.04.2360](https://doi.org/10.1016/j.gie.2018.04.2360)

Reference: YMGE 11076

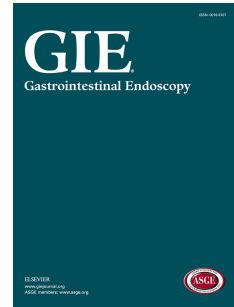
To appear in: *Gastrointestinal Endoscopy*

Received Date: 20 February 2018

Accepted Date: 26 April 2018

Please cite this article as: Min YW, Lee H, Song BG, Min B-H, Kim HK, Choi YS, Lee JH, Hwang N-Y, Carriere KC, Rhee P-L, Kim JJ, Zo JI, Shim YM, Comparison of endoscopic submucosal dissection and surgery for superficial esophageal squamous cell carcinoma: A propensity score-matched analysis, *Gastrointestinal Endoscopy* (2018), doi: 10.1016/j.gie.2018.04.2360.

This is a PDF file of an unedited manuscript that has been accepted for publication. As a service to our customers we are providing this early version of the manuscript. The manuscript will undergo copyediting, typesetting, and review of the resulting proof before it is published in its final form. Please note that during the production process errors may be discovered which could affect the content, and all legal disclaimers that apply to the journal pertain.



Comparison of endoscopic submucosal dissection and surgery for superficial esophageal squamous cell carcinoma: A propensity score-matched analysis

Yang Won Min^{1,*}, Hyuk Lee^{1,*}, Byeong Geun Song¹, Byung-Hoon Min¹, Hong Kwan Kim², Yong Soo Choi², Jun Haeng Lee¹, Na-Young Hwang³, Keumhee C. Carriere^{3,4}, Poong-Lyul Rhee¹, Jae J. Kim¹, Jae Ill Zo², and Young Mog Shim²

¹Department of Medicine, Samsung Medical Center, Sungkyunkwan University School of Medicine, Seoul, Korea

²Department of Thoracic and Cardiovascular Surgery, Samsung Medical Center, Sungkyunkwan University School of Medicine, Seoul, Korea

³Biostatistics and Clinical Epidemiology Center, Samsung Medical Center, Sungkyunkwan University School of Medicine, Seoul, Korea

⁴Department of Mathematical and Statistical Sciences, University of Alberta, Edmonton, Alberta, Canada

*These two authors contributed equally to this work.

Corresponding author: Young Mog Shim, M.D., Ph.D.

Department of Thoracic and Cardiovascular Surgery, Samsung Medical Center, Sungkyunkwan University School of Medicine, 81 Irwon-ro, Gangnam-gu, Seoul 06351, South Korea

Phone: +82-2-3410-1677; Fax: +82-2-3410-0489; E-mail: youngmog.shim@samsung.com

Download English Version:

<https://daneshyari.com/en/article/10217935>

Download Persian Version:

<https://daneshyari.com/article/10217935>

[Daneshyari.com](https://daneshyari.com)