

Accepted Manuscript

The Intensive Care Unit (ICU) course and outcome in Acute-on-chronic liver failure are comparable to other populations

Philippe Meersseman, Lies Langouche, Johannie du Plessis, Hannelie Korf, Michaël Mekeirele, Wim Laleman, Frederik Nevens, Alexander Wilmer, Greet Van den Berghe, Schalk W. van der Merwe

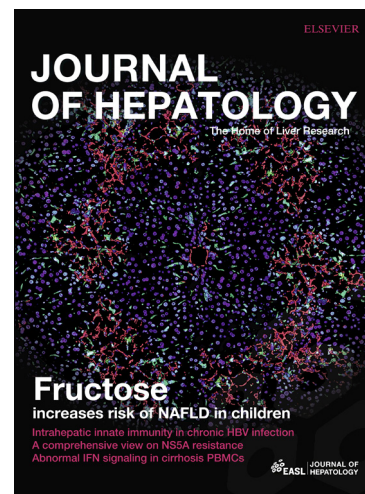
PII: S0168-8278(18)32043-9
DOI: <https://doi.org/10.1016/j.jhep.2018.04.025>
Reference: JHEPAT 6959

To appear in: *Journal of Hepatology*

Received Date: 20 December 2017
Revised Date: 4 April 2018
Accepted Date: 23 April 2018

Please cite this article as: Meersseman, P., Langouche, L., du Plessis, J., Korf, H., Mekeirele, M., Laleman, W., Nevens, F., Wilmer, A., Van den Berghe, G., van der Merwe, S.W., The Intensive Care Unit (ICU) course and outcome in Acute-on-chronic liver failure are comparable to other populations, *Journal of Hepatology* (2018), doi: <https://doi.org/10.1016/j.jhep.2018.04.025>

This is a PDF file of an unedited manuscript that has been accepted for publication. As a service to our customers we are providing this early version of the manuscript. The manuscript will undergo copyediting, typesetting, and review of the resulting proof before it is published in its final form. Please note that during the production process errors may be discovered which could affect the content, and all legal disclaimers that apply to the journal pertain.



The Intensive Care Unit (ICU) course and outcome in Acute-on-chronic liver failure are comparable to other populations

Philippe Meersseman^{1*}, Lies Langouche^{2*}, Johannie du Plessis³, Hannelie Korf³, Michaël Mekeirele¹, Wim Laleman^{3,4}, Frederik Nevens^{3,4}, Alexander Wilmer¹, Greet Van den Berghe², Schalk W. van der Merwe^{3,4}

¹ Department of Internal Medicine, University Hospitals Leuven [KU Leuven], Belgium, ² Clinical Division and Laboratory of Intensive Care Medicine, Department of Cellular and Molecular Medicine, University of Leuven [KU Leuven], Belgium, ³ Laboratory of Hepatology, University of Leuven [KU Leuven], Belgium, ⁴ Department of Gastroenterology and Hepatology, University Hospitals Leuven [KU Leuven], Belgium

*Authors contributed equally to the manuscript

Corresponding author: Philippe Meersseman and Schalk W. van der Merwe

Key-words: cirrhosis, sepsis, ICU, cytokines, liver transplantation

Download English Version:

<https://daneshyari.com/en/article/10218098>

Download Persian Version:

<https://daneshyari.com/article/10218098>

[Daneshyari.com](https://daneshyari.com)