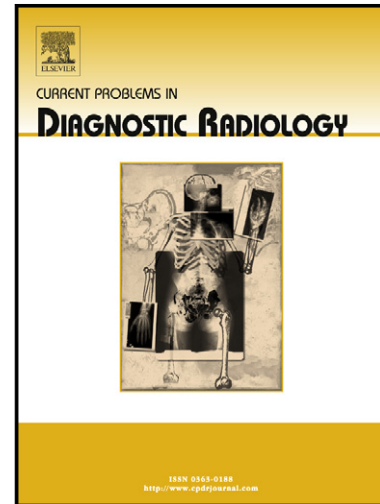


Author's Accepted Manuscript

Sorting the Alphabet Soup of Renal Pathology: A Review

Sheilah M. Curran-Melendez MD, Matthew S. Hartman MD, Matthew T. Heller MD, Nancy Okechukwu MD



www.cpdjournal.com

PII: S0363-0188(15)30049-9
DOI: <http://dx.doi.org/10.1067/j.cpradiol.2016.01.003>
Reference: YMDR419

To appear in: *Current Problems in Diagnostic Radiology*

Cite this article as: Sheilah M. Curran-Melendez MD, Matthew S. Hartman MD, Matthew T. Heller MD, Nancy Okechukwu MD, Sorting the Alphabet Soup of Renal Pathology: A Review, *Current Problems in Diagnostic Radiology*, <http://dx.doi.org/10.1067/j.cpradiol.2016.01.003>

This is a PDF file of an unedited manuscript that has been accepted for publication. As a service to our customers we are providing this early version of the manuscript. The manuscript will undergo copyediting, typesetting, and review of the resulting galley proof before it is published in its final citable form. Please note that during the production process errors may be discovered which could affect the content, and all legal disclaimers that apply to the journal pertain.

Title: Sorting the Alphabet Soup of Renal Pathology: A Review

Author:

Sheilah M. Curran-Melendez^a, MD

Matthew S. Hartman^a, MD

Matthew T. Heller^b, MD

Nancy Okechukwu^a, MD

Affiliations:

a - Allegheny Health Network
Allegheny General Hospital, Department of Radiology
320 E. North Ave
Pittsburgh, PA 15212

b - University of Pittsburgh Medical Center
Department of Radiology
3600 Forbes at Meyran Avenues – Plaza Level
Pittsburgh, PA 15213

Corresponding Author

Sheilah M. Curran-Melendez

Allegheny Health Network

Allegheny General Hospital, Department of Radiology

320 E. North Ave

Pittsburgh, PA 15212

1-412-359-8409

sheilah.curran@gmail.com

Abstract

Diseases of the kidney often have their names shortened, creating an arcane set of acronyms which can be confusing to both radiologists and clinicians. This review of renal pathology aims to explain some of the most commonly used acronyms within the field. For each entity, a summary of the clinical features, pathophysiology, and radiological findings is included to aid in the understanding and differentiation of these entities. Discussed topics include acute cortical necrosis, autosomal dominant polycystic kidney disease, angiomyolipoma, autosomal recessive polycystic kidney disease, acute tubular necrosis, localized cystic renal disease, multicystic dysplastic kidney, multilocular cystic nephroma, multilocular cystic renal cell carcinoma, medullary sponge kidney, paroxysmal nocturnal hemoglobinuria, renal papillary necrosis, transitional cell carcinoma, and xanthogranulomatous pyelonephritis.

Download English Version:

<https://daneshyari.com/en/article/10222514>

Download Persian Version:

<https://daneshyari.com/article/10222514>

[Daneshyari.com](https://daneshyari.com)