

Accepted Manuscript

Macroinvertebrate communities on rocky shores: Impact due to human visitors

Čedomir Stevčić, Marta Pérez-Miguel, Pilar Drake, Antonio Tovar-Sánchez, Jose A. Cuesta



PII: S0272-7714(16)30795-8

DOI: [10.1016/j.ecss.2017.11.026](https://doi.org/10.1016/j.ecss.2017.11.026)

Reference: YECSS 5683

To appear in: *Estuarine, Coastal and Shelf Science*

Received Date: 31 December 2016

Revised Date: 21 November 2017

Accepted Date: 23 November 2017

Please cite this article as: Stevčić, Č., Pérez-Miguel, M., Drake, P., Tovar-Sánchez, A., Cuesta, J.A., Macroinvertebrate communities on rocky shores: Impact due to human visitors, *Estuarine, Coastal and Shelf Science* (2018), doi: 10.1016/j.ecss.2017.11.026.

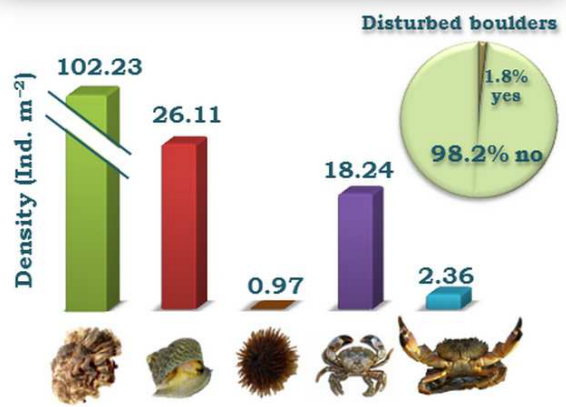
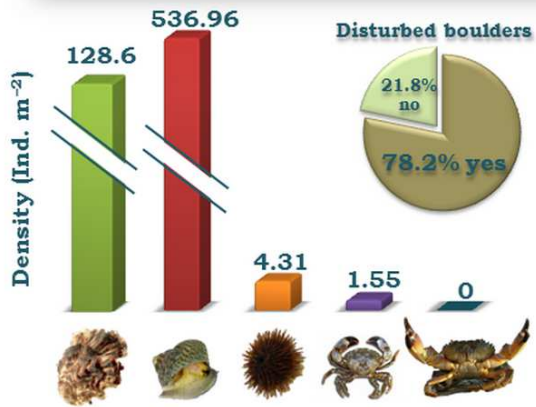
This is a PDF file of an unedited manuscript that has been accepted for publication. As a service to our customers we are providing this early version of the manuscript. The manuscript will undergo copyediting, typesetting, and review of the resulting proof before it is published in its final form. Please note that during the production process errors may be discovered which could affect the content, and all legal disclaimers that apply to the journal pertain.



Visited Beach



Restricted Beach



ACCEPTED MANUSCRIPT

Download English Version:

<https://daneshyari.com/en/article/10223840>

Download Persian Version:

<https://daneshyari.com/article/10223840>

[Daneshyari.com](https://daneshyari.com)