

Accepted Manuscript

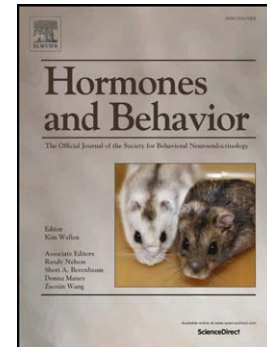
Evaluation of Reference Genes for Quantitative Real-Time PCR in Songbirds

Wendy M. Zinzow-Kramer, Brent M. Horton, Donna L. Maney

PII: S0018-506X(14)00078-6
DOI: doi: [10.1016/j.yhbeh.2014.04.011](https://doi.org/10.1016/j.yhbeh.2014.04.011)
Reference: YHBEH 3712

To appear in: *Hormones and Behavior*

Received date: 18 December 2013
Revised date: 1 April 2014
Accepted date: 20 April 2014



Please cite this article as: Zinzow-Kramer, Wendy M., Horton, Brent M., Maney, Donna L., Evaluation of Reference Genes for Quantitative Real-Time PCR in Songbirds, *Hormones and Behavior* (2014), doi: [10.1016/j.yhbeh.2014.04.011](https://doi.org/10.1016/j.yhbeh.2014.04.011)

This is a PDF file of an unedited manuscript that has been accepted for publication. As a service to our customers we are providing this early version of the manuscript. The manuscript will undergo copyediting, typesetting, and review of the resulting proof before it is published in its final form. Please note that during the production process errors may be discovered which could affect the content, and all legal disclaimers that apply to the journal pertain.

Evaluation of Reference Genes for Quantitative Real-Time PCR in Songbirds

Wendy M. Zinzow-Kramer, Brent M. Horton, and Donna L. Maney

Department of Psychology, Emory University, Atlanta, GA, United States of America

Corresponding Author:

Wendy M. Zinzow-Kramer

1510 Clifton Rd

Rollins Research Center, Rm 2006

Emory University, Atlanta, GA 30322

Phone: +1-404-727-5879

Fax: +1-404-727-4034

wzinzow@emory.edu

Download English Version:

<https://daneshyari.com/en/article/10301052>

Download Persian Version:

<https://daneshyari.com/article/10301052>

[Daneshyari.com](https://daneshyari.com)