

Accepted Manuscript

Estrous cycle fluctuations in sex and ingestive behavior are accentuated by exercise or cold ambient temperatures

Amir Abdulhay, Noah A. Benton, Candice M. Klingerman, Kaila Krishnamoorthy, Jeremy M. Brozek, Jill E. Schneider

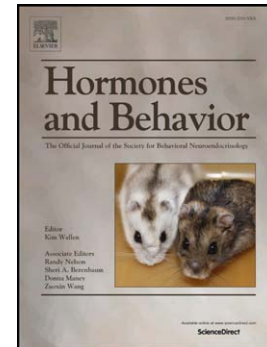
PII: S0018-506X(14)00084-1
DOI: doi: [10.1016/j.yhbeh.2014.04.016](https://doi.org/10.1016/j.yhbeh.2014.04.016)
Reference: YHBEH 3718

To appear in: *Hormones and Behavior*

Received date: 3 January 2014
Revised date: 22 April 2014
Accepted date: 25 April 2014

Please cite this article as: Abdulhay, Amir, Benton, Noah A., Klingerman, Candice M., Krishnamoorthy, Kaila, Brozek, Jeremy M., Schneider, Jill E., Estrous cycle fluctuations in sex and ingestive behavior are accentuated by exercise or cold ambient temperatures, *Hormones and Behavior* (2014), doi: [10.1016/j.yhbeh.2014.04.016](https://doi.org/10.1016/j.yhbeh.2014.04.016)

This is a PDF file of an unedited manuscript that has been accepted for publication. As a service to our customers we are providing this early version of the manuscript. The manuscript will undergo copyediting, typesetting, and review of the resulting proof before it is published in its final form. Please note that during the production process errors may be discovered which could affect the content, and all legal disclaimers that apply to the journal pertain.



Estrous cycle fluctuations in sex and ingestive behavior are accentuated by exercise or cold ambient temperatures

Amir Abdulhay^{1*}, Noah A. Benton^{1*}, Candice M. Klingerman², Kaila Krishnamoorthy³, Jeremy M. Brozek¹, and Jill E. Schneider^{1#}

#Corresponding Author:
Jill E. Schneider
Department of Biological Sciences
111 Research Drive
Bethlehem, PA 18015
610 758 3629
610 758 4004
js0v@lehigh.edu

* = co-first authors (both Abdulhay and Benton are co-first authors)

1 = Lehigh University, Department of Biological Sciences, Bethlehem, PA 18015

2 = Bloomsburg University, Department of Biological and Allied Health Sciences, Bloomsburg, PA 17815

3 = Drexel University Medical School, Philadelphia, PA 19104

Keywords (max of 6): appetitive behavior, ingestive behavior, vaginal marking, estrous cycle, food intake, estradiol

Download English Version:

<https://daneshyari.com/en/article/10301474>

Download Persian Version:

<https://daneshyari.com/article/10301474>

[Daneshyari.com](https://daneshyari.com)