



Sexual dimorphism of canine volume: A pilot study



Danilo De Angelis^{a,*}, Daniele Gibelli^a, Daniel Gaudio^a, Filippo Cipriani Noce^b, Nicola Guercini^c, Giuseppe Varvara^b, Emanuela Sguazza^{a,d}, Chiarella Sforza^e, Cristina Cattaneo^a

^a LABANOF, Laboratorio di Antropologia e Odontologia Forense, Sezione di Medicina Legale, Dipartimento di Scienze Biomediche per la Salute, Università degli Studi di Milano, Italy

^b Facoltà di Medicina e Chirurgia, Dipartimento di Scienze Biomediche Orali e Biotecnologiche, Università degli Studi G. D'Annunzio Chieti-Pescara, Italy

^c ULSS N. 6 Vicenza -Servizio di Genetica Umana, Italy

^d Dipartimento di Biotecnologie e Scienze della Vita, Università degli Studi dell'Insubria, Varese, Italy

^e Dipartimento di Scienze Biomediche per la Salute, Università degli Studi di Milano, Italy

ARTICLE INFO

Article history:

Received 15 September 2014

Received in revised form 5 December 2014

Accepted 11 December 2014

Available online 20 December 2014

Keywords:

Diagnosis of sex

Dental anatomy

Permanent teeth

Cone beam computerized tomography

(CBCT)

Dental volume

ABSTRACT

Sex assessment is a crucial part of the biological profile in forensic and archaeological context, but it can be hardly performed in cases of commingled and charred human remains where DNA tests often are not applicable. With time literature have analyzed the sexual dimorphism of teeth (and especially canines), but very few articles take into consideration the teeth volume, although with time several technologies have been introduced in order to assess 3D volume (CT-scan, laser scanner, etc.).

This study aims at assessing the sexual dimorphism of dental and pulp chamber volumes of a sample of canines. Cone beam computed tomography analyses were performed by 87 patients (41 males and 46 females, aged between 15 and 83 years) for clinical purposes, and were acquired in order to measure canine volumes. Results show that the dental volume amounted to 0.745 cm³ (SD 0.126 cm³) in males, 0.551 cm³ (SD 0.130 cm³) with a statistically significant difference ($p < 0.01$). A diagnostic threshold of 0.619 cm³ was stated, which provides a percentage of correct answer of 80.5% in the chosen sample. The novel method was then applied with success to 7 archaeological: where in all the cases the results were concordant with those provided by the assessment of the cranium and pelvis.

The study adds a contribution to the wide analysis of dental sexual dimorphism confirming the statistically significant differences of volume between males and females and providing a method for the diagnosis of sex applicable to forensic cases.

© 2014 Elsevier Ireland Ltd. All rights reserved.

1. Introduction

Sex assessment has a relevant importance in the reconstruction of the biological profile of human remains, and literature provide several methods for reaching a correct diagnosis on the base of different bodily districts, mainly the pubis and cranium [1]. However, both in the forensic practice and archaeological context as well it is not uncommon to recover human remains where these structures are no longer appreciable, for example because of extreme fragmentation or carbonization of the skeleton. In addition, in these cases genetic tests often are not able to produce a reliable profile because of high DNA degradation [2]. From this point of view teeth may provide a relevant contribution, not only to personal identification

[3], but also to the diagnosis of sex, thanks to their dimorphism and resistance to taphonomic effects. In literature, canines are known to show the highest degree of dimorphism [4], as also confirmed by several studies performed on different populations [5,6]: in human evolution, canine sexual dimorphism (CSD) has been already known, as it is critical for interpreting the developmental biology, socioecology and phylogenetic position of primate groups, since this phenomenon is absent to weak in extant prosimians [7]. From a forensic point of view, the dimorphism of canine may provide a help to diagnosis of sex, and several authors have analyzed and verified the statistically significant differences of linear metrical indications and ratios between males and females [4,8–10], although the last ones proved to be less reliable than single measurements [4,11,12]. Very few studies deal with the area of teeth, and found that the relative dentin-pulp area of canines and first premolars shows high levels of sexual dimorphism [13]. At the moment, only two studies have so far taken into consideration the sexual dimorphism of teeth volume: the first one was performed on mandibular central incisors and on a sample of 5–6 year old

* Corresponding author at: LABANOF, Laboratorio di Antropologia e Odontologia Forense, Dipartimento di Scienze Biomediche per la Salute, Università degli Studi di Milano, V. Mangiagalli 37, Milan, Italy. Tel.: +39 02 50315399; fax: +39 02 50315724.

E-mail address: danilo.deangelis@unimi.it (D. De Angelis).

children, where no statistically significant differences were found according to sex [14]. The second one by Tardivo et al. ascertained a sexual dimorphism of mandibular canine volumes and provided a formula for assessing age, given the volume of the tooth in mm³ [15]. However the authors do not provide a formula also for the upper canines.

In the last years more and more technologies have been introduced, able to record 3D volume of items and biological material as well: some examples are cone beam CT-scan [16] and laser scanner [17], which have begun in the last years to be applied also to the forensic scenario, although in other fields of research than the diagnosis of sex. Therefore the chances to improve new methods applicable to the forensic context and based on the analysis of teeth volume is worth being taken into consideration.

This study aims at confirming the existing data concerning sexual dimorphism of upper canine volumes, analyzing also other indices such as the pulp chamber volume and the ratio between pulp chamber and dental volume, in order to improve a novel method for the diagnosis of sex.

2. Materials and methods

A sample of 87 patients (41 males and 46 females, aged between 15 and 83 years) underwent to CBCT (cone beam computerized tomography) for clinical reasons not dependant upon the present study, using a i-Cat Next Generation (Imaging Sciences International, Hatfield, Pa) with the same settings for each subject (voxel size: 0.4 mm; scan time: 8.9 s; scan width: 23.2 cm; scan height: 17 cm). Exclusion criteria were the presence of oral pathologies, facial and oral deformities and systemic diseases. Once the analyses were performed, the images were elaborated by open-source freeware software Osirix in order to estimate the volume of the upper right canine and its pulp chamber. The volumes were evaluated by manually defining the perimeter of each tooth and corresponding pulp chamber on horizontal plane by creating a ROI (region of interest) including the delimited areas every 3–4 slices from the root apex up to the crown.

The missing ROI were then created by the function “generate missing ROIs”, included in the software. The volume delimited by each group of ROIs was then calculated by the function “ROI volume – compute volume”. The volumes of upper right canines were evaluated in cm³, together with the corresponding pulp chamber and ratio between the pulp chamber and total dental volume.

In addition, in order to test the novel method 7 canines were sampled from archaeological skeletons dating back to the Roman period and Middle Age recovered from six sites from Lombardia, North Italy (Chiavenna, Lovero, Postalesio, Teglio, Verceia): all the teeth were indicated with the number of tomb (T) and stratigraphic unit (SU). In all the seven cases sex was diagnosed by the assessment of morphological traits of the cranium and pelvis [1]. The canines belong to 2 males and 5 females. In order to acquire the volume of each canine, a 3D scanner (Dental Wings©) was used: teeth were fixed by plasticine to the basal surface of the scanner and software DWOS© elaborated a 3D model which was then exported in a specific software for the elaboration of three-dimensional images (VAM©) for the estimation of the volume parameters (Fig. 1). Sex was then determined by applying the threshold elaborated by the statistical analysis of the 87 subjects.

3. Results

Data concerning dental volume and pulp chamber volume are shown in Table 1 and Fig. 2. The mean dental volume amounted to 0.745 cm³ (SD 0.126 cm³) in males, 0.551 cm³ (SD 0.130 cm³) in females; the mean pulp chamber volume was 0.029 cm³ (SD

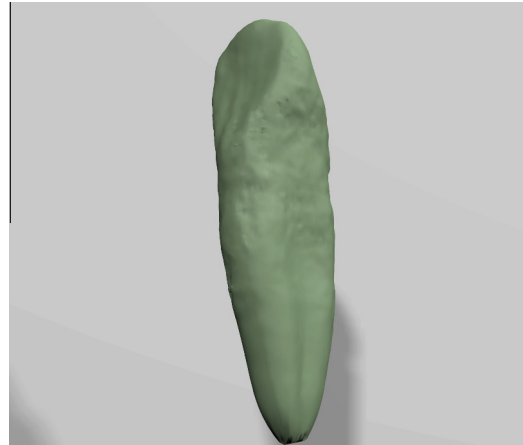


Fig. 1. Example of a 3D model of an upper canine by 3D scanner (Dental Wings©).

Table 1

Statistical data concerning dental volume and pulp chamber volume in males and females.

	Males	Females
Mean dental volume (SD)	0.745 cm ³ (0.126 cm ³)*	0.551 cm ³ (0.130 cm ³)*
Minimum dental volume	0.424 cm ³	0.308 cm ³
Maximum dental volume	1.064 cm ³	0.919 cm ³
Mean pulp chamber volume (SD)	0.029 cm ³ (0.011 cm ³)**	0.022 cm ³ (0.012 cm ³)**
Minimum pulp chamber volume	0.011 cm ³	0.006 cm ³
Maximum pulp chamber volume	0.061 cm ³	0.052 cm ³
Mean percentage ratio between pulp chamber and tooth (SD)	3.9% (1.3%)	3.9% (1.7%)

SD: standard deviation.

* Statistically significant difference between males and females ($p < 0.01$).

** Not statistically difference between males and females ($p > 0.01$).

0.011 cm³) in males, 0.022 cm³ (SD 0.012 cm³) in females. The mean percentage ratio between pulp chamber and tooth was the same in males and females (3.9%, with a standard deviation of 1.3% in males, 1.7% in females). Among all the measurements, only the dental volume shows a significant difference between males and females ($p < 0.01$). Therefore, since only the external volume seems to be related with sex, less expensive methods than CBCT can be used, such as a volumeter.

In detail, for what concerns the dental volume, a threshold value is estimable in 0.619 cm³: considering individuals with a higher dental volume as males and with a lower dental volume as females the percentage of correct diagnosis was 87.8% in males and 73.9% in females (80.5% in mean).

For what concerns the test on archaeological samples, the application of 0.619 cm³ threshold gave a result concordant with the results provided by the morphological analysis of cranium and pelvis in all the cases (Table 2).

4. Discussion

Sexual dimorphism of teeth is a well known phenomenon, widely analyzed also from the genetic point of view. Literature report that Y chromosome influences dental growth by promoting both amelogenesis and dentinogenesis by enhancing mitotic activity in tooth germs with a consequent higher dentine thickness in males [18,19]. Amelogenin genes, which is present on both X and Y chromosomes, is implicated in tooth size dimorphism [20], whereas modifications of sex hormones have a more limited

Download English Version:

<https://daneshyari.com/en/article/103658>

Download Persian Version:

<https://daneshyari.com/article/103658>

[Daneshyari.com](https://daneshyari.com)