

Accepted Manuscript

Notes & tips

LC-MS with post-column partial reduction for the analysis of native and scrambled disulfide bonds

Xiaojuan Li, Wei Xu, Brittany Paporello, Daisy Richardson, Hongcheng Liu

PII: S0003-2697(13)00203-0

DOI: <http://dx.doi.org/10.1016/j.ab.2013.04.021>

Reference: YABIO 11332

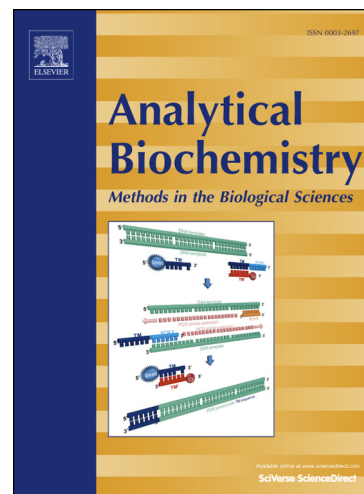
To appear in: *Analytical Biochemistry*

Received Date: 19 April 2013

Accepted Date: 22 April 2013

Please cite this article as: X. Li, W. Xu, B. Paporello, D. Richardson, H. Liu, LC-MS with post-column partial reduction for the analysis of native and scrambled disulfide bonds, *Analytical Biochemistry* (2013), doi: <http://dx.doi.org/10.1016/j.ab.2013.04.021>

This is a PDF file of an unedited manuscript that has been accepted for publication. As a service to our customers we are providing this early version of the manuscript. The manuscript will undergo copyediting, typesetting, and review of the resulting proof before it is published in its final form. Please note that during the production process errors may be discovered which could affect the content, and all legal disclaimers that apply to the journal pertain.



LC-MS with post-column partial reduction for the analysis of native and scrambled disulfide bonds

Xiaojuan Li, Wei Xu, Brittany Paporello, Daisy Richardson, Hongcheng Liu

Merck Research Laboratories

1011 Morris Avenue, Union, NJ07083

Corresponding author

Email: Hongcheng.liu@merck.com

Phone: 908-820-6162

Short title: LC-MS analysis of disulfide bonds

Subject category: Protein structure and analysis

Download English Version:

<https://daneshyari.com/en/article/10532709>

Download Persian Version:

<https://daneshyari.com/article/10532709>

[Daneshyari.com](https://daneshyari.com)