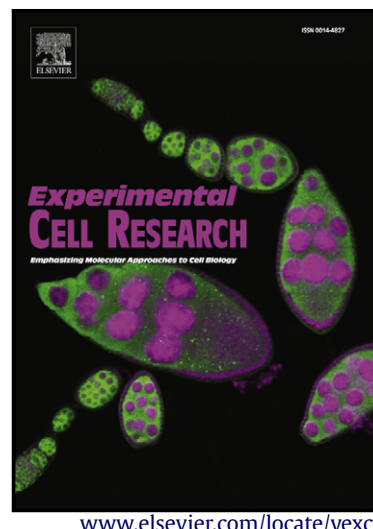


Retinal Pigment Epithelium (RPE) exosomes contain signaling phosphoproteins affected by oxidative stress

Lucia Biasutto, Antonella Chiechi, Robin Couch, Lance A. Liotta, Virginia Espina



PII: S0014-4827(13)00199-7
DOI: <http://dx.doi.org/10.1016/j.yexcr.2013.05.005>
Reference: YEXCR9311

To appear in: *Experimental Cell Research*

Received date: 11 March 2013
Revised date: 3 May 2013
Accepted date: 4 May 2013

Cite this article as: Lucia Biasutto, Antonella Chiechi, Robin Couch, Lance A. Liotta, Virginia Espina, Retinal Pigment Epithelium (RPE) exosomes contain signaling phosphoproteins affected by oxidative stress, *Experimental Cell Research*, <http://dx.doi.org/10.1016/j.yexcr.2013.05.005>

This is a PDF file of an unedited manuscript that has been accepted for publication. As a service to our customers we are providing this early version of the manuscript. The manuscript will undergo copyediting, typesetting, and review of the resulting galley proof before it is published in its final citable form. Please note that during the production process errors may be discovered which could affect the content, and all legal disclaimers that apply to the journal pertain.

Title

Retinal Pigment Epithelium (RPE) exosomes contain signaling phosphoproteins affected by oxidative stress.

Lucia Biasutto^{a,b,*}, Antonella Chiechi^c, Robin Couch^d, Lance A. Liotta^c, Virginia Espina^{c,*}

^a*CNR Institute of Neuroscience, Viale G. Colombo 3, 35121 Padova, Italy*

^b*Department of Biomedical Sciences, University of Padova, Viale G. Colombo 3, 35121 Padova, Italy*

^c*Center for Applied Proteomics and Molecular Medicine, George Mason University, 10900 University Blvd, Manassas, VA 20110, USA*

^d*Department of Chemistry and Biochemistry, George Mason University, 10900 University Blvd, Manassas, VA 20110, USA*

^{*} *Corresponding authors:*

Lucia Biasutto: CNR Institute of Neuroscience, c/o Dept. Biomedical Sciences, Viale G. Colombo 3, 35121 Padova, Italy. Fax: +39 0498276049. Phone: +390498276483. Email address: lucia.biasutto@cnr.it.

Virginia Espina: Center for Applied Proteomics and Molecular Medicine, George Mason University, 10900 University Blvd, MS 1A9, Manassas, VA 20110, USA. Fax: 1-703-993-8606. Phone: 1-703-993-8062. Email address: vespina@gmu.edu.

Download English Version:

<https://daneshyari.com/en/article/10904240>

Download Persian Version:

<https://daneshyari.com/article/10904240>

[Daneshyari.com](https://daneshyari.com)