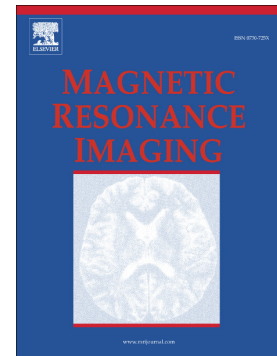


## Accepted Manuscript

Regional cardiac function analysis from tagged MRI images. Comparison of techniques: Harmonic-Phase (HARP) versus Sinusoidal-Modeling (SinMod) analysis

El-Sayed H. Ibrahim, Jadranka Stojanovska, Azza Hassanein, Claire Duvernoy, Pierre Croisille, Rodica Pop-Busui, Scott D. Swanson



PII: S0730-725X(18)30141-3  
DOI: doi:[10.1016/j.mri.2018.05.008](https://doi.org/10.1016/j.mri.2018.05.008)  
Reference: MRI 8966

To appear in:

Received date: 11 November 2017  
Revised date: 19 April 2018  
Accepted date: 15 May 2018

Please cite this article as: El-Sayed H. Ibrahim, Jadranka Stojanovska, Azza Hassanein, Claire Duvernoy, Pierre Croisille, Rodica Pop-Busui, Scott D. Swanson , Regional cardiac function analysis from tagged MRI images. Comparison of techniques: Harmonic-Phase (HARP) versus Sinusoidal-Modeling (SinMod) analysis. The address for the corresponding author was captured as affiliation for all authors. Please check if appropriate. *Mri*(2017), doi:[10.1016/j.mri.2018.05.008](https://doi.org/10.1016/j.mri.2018.05.008)

This is a PDF file of an unedited manuscript that has been accepted for publication. As a service to our customers we are providing this early version of the manuscript. The manuscript will undergo copyediting, typesetting, and review of the resulting proof before it is published in its final form. Please note that during the production process errors may be discovered which could affect the content, and all legal disclaimers that apply to the journal pertain.

**Regional cardiac function analysis from tagged MRI images. Comparison of techniques: Harmonic-Phase (HARP) versus Sinusoidal-Modeling (SinMod) analysis**

***El-Sayed H. Ibrahim, PhD,<sup>a\*</sup> Jadranka Stojanovska, MD,<sup>b</sup> Azza Hassanein, PhD,<sup>c</sup> Claire Duvernoy, MD,<sup>b</sup> Pierre Croisille, PhD,<sup>d</sup> Rodica Pop-Busui, MD,<sup>b</sup> Scott D. Swanson, PhD<sup>b</sup>***

<sup>a</sup>Medical College of Wisconsin, Milwaukee, WI, USA

<sup>b</sup>University of Michigan, Ann Arbor, MI, USA

<sup>c</sup>Helwan University, Cairo, Egypt

<sup>d</sup>Univ Lyon, Saint-Etienne, France

**Conflicts of Interest**

None.

**\*Corresponding Author:**

Dr. El-Sayed Ibrahim

Department of Radiology, Medical College of Wisconsin

8701 Watertown Plank Rd, Milwaukee, WI 53226, USA

Telephone: +1-414-955-4035

Fax: +1-414-955-6314

Email: eibrahim@mcw.edu

Download English Version:

<https://daneshyari.com/en/article/11007521>

Download Persian Version:

<https://daneshyari.com/article/11007521>

[Daneshyari.com](https://daneshyari.com)