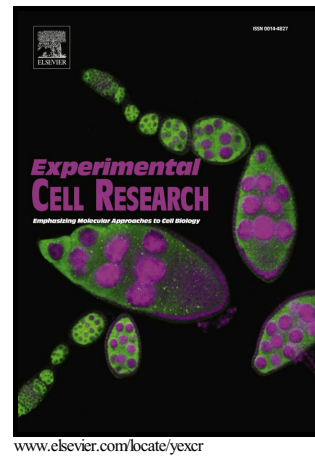


Author's Accepted Manuscript

Metabolic profiling associated with autophagy of human placenta-derived mesenchymal stem cells by chemical isotope labeling LC-MS

Yanni Sun, Deying Chen, Jingqi Liu, Yanping Xu, Xiaowei Shi, Xian Luo, Qiaoling Pan, Jiong Yu, Jinfeng Yang, Hongcui Cao, Liang Li, Lanjuan Li



PII: S0014-4827(18)30763-8
DOI: <https://doi.org/10.1016/j.yexcr.2018.09.009>
Reference: YEXCR11195

To appear in: *Experimental Cell Research*

Received date: 20 August 2018
Revised date: 12 September 2018
Accepted date: 14 September 2018

Cite this article as: Yanni Sun, Deying Chen, Jingqi Liu, Yanping Xu, Xiaowei Shi, Xian Luo, Qiaoling Pan, Jiong Yu, Jinfeng Yang, Hongcui Cao, Liang Li and Lanjuan Li, Metabolic profiling associated with autophagy of human placenta-derived mesenchymal stem cells by chemical isotope labeling LC-MS, *Experimental Cell Research*, <https://doi.org/10.1016/j.yexcr.2018.09.009>

This is a PDF file of an unedited manuscript that has been accepted for publication. As a service to our customers we are providing this early version of the manuscript. The manuscript will undergo copyediting, typesetting, and review of the resulting galley proof before it is published in its final citable form. Please note that during the production process errors may be discovered which could affect the content, and all legal disclaimers that apply to the journal pertain.

Metabolic profiling associated with autophagy of human placenta-derived mesenchymal stem cells by chemical isotope labeling LC–MS

Yanni Sun¹, Deying Chen¹, Jingqi Liu¹, Yanping Xu¹, Xiaowei Shi³, Xian Luo², Qiaoling Pan¹, Jiong Yu¹, Jinfeng Yang¹, Hongcui Cao^{1*}, Liang Li², Lanjuan Li¹

1 State Key Laboratory for Diagnosis and Treatment of Infectious Diseases, the First Affiliated Hospital, College of Medicine, Zhejiang University; Collaborative Innovation Center for Diagnosis and Treatment of Infectious Diseases, 79 Qingchun Road, Hangzhou 310003, China

2 Department of Chemistry, University of Alberta, Edmonton, Alberta T6G 2G2, Canada

3 Chu Kochen Honors College, Zhejiang University, 866 Yuhangtang Road, Hangzhou 310058, China

Email addresses:

Yanni Sun: yannisunshine@163.com

Deying Chen: deyingchen@zju.edu.cn

Jingqi Liu, jqliu97@zju.edu.cn

Yanping Xu, yanpingxu@zju.edu.cn

Xiaowei Shi, xiaoweishi@zju.edu.cn

Xian Luo: xluo2@ualberta.ca

Qiaoling Pan: qiaolingpan@zju.edu.cn

Jiong Yu: yujiong@zju.edu.cn

Jinfeng Yang: jinfengjinfengyang@163.com

Hongcui Cao: hccao@zju.edu.cn

Liang Li: liang.li@ualberta.ca

Lanjuan Li: ljli@zju.edu.cn

*Corresponding author:

Download English Version:

<https://daneshyari.com/en/article/11019528>

Download Persian Version:

<https://daneshyari.com/article/11019528>

[Daneshyari.com](https://daneshyari.com)