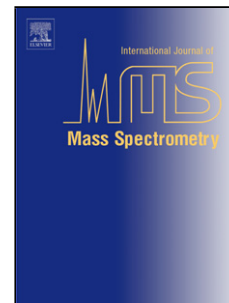


## Accepted Manuscript

Title: Strategies to boost Archaea *Sulfolobus solfataricus* P2 proteome coverage and predict new genes

Authors: Bing Wang, Lin Yang, Yuyue Zhan, Junhui Hao, Cuihong Wan



PII: S1387-3806(18)30165-9  
DOI: <https://doi.org/10.1016/j.ijms.2018.10.004>  
Reference: MASPEC 16039

To appear in: *International Journal of Mass Spectrometry*

Received date: 30-5-2018  
Revised date: 21-9-2018  
Accepted date: 2-10-2018

Please cite this article as: Wang B, Yang L, Zhan Y, Hao J, Wan C, Strategies to boost Archaea *Sulfolobus solfataricus* P2 proteome coverage and predict new genes, *International Journal of Mass Spectrometry* (2018), <https://doi.org/10.1016/j.ijms.2018.10.004>

This is a PDF file of an unedited manuscript that has been accepted for publication. As a service to our customers we are providing this early version of the manuscript. The manuscript will undergo copyediting, typesetting, and review of the resulting proof before it is published in its final form. Please note that during the production process errors may be discovered which could affect the content, and all legal disclaimers that apply to the journal pertain.

# Strategies to boost *Archaea Sulfolobus solfataricus* P2 proteome coverage and predict new genes

Bing Wang, Lin Yang, Yuyue Zhan, Junhui Hao, Cuihong Wan\*

Hubei Key Lab of Genetic Regulation & Integrative Biology, School of Life Sciences,  
Central China Normal University, No. 152 Luoyu Road, Wuhan 430079, P. R. China

Address reprint requests to:

Prof. Cuihong Wan

Address: No. 152 Luoyu Road, Wuhan, P.R. China, 430079

Phone number: 86-027-67861936

Email: ch\_wan@mail.ccnu.edu.cn

Running title: Improve the identification of *S. solfataricus* P2 proteome

**Graphical abstract**

Download English Version:

<https://daneshyari.com/en/article/11029696>

Download Persian Version:

<https://daneshyari.com/article/11029696>

[Daneshyari.com](https://daneshyari.com)