

Accepted Manuscript

Mass Transport Complexes on a Cenozoic paleo-shelf edge, Gippsland basin, southeastern Australia

P.E. O'Brien, C.H. Mitchell, D. Nguyen, R.P. Langford



PII: S0264-8172(18)30353-2

DOI: [10.1016/j.marpetgeo.2018.08.029](https://doi.org/10.1016/j.marpetgeo.2018.08.029)

Reference: JMPG 3469

To appear in: *Marine and Petroleum Geology*

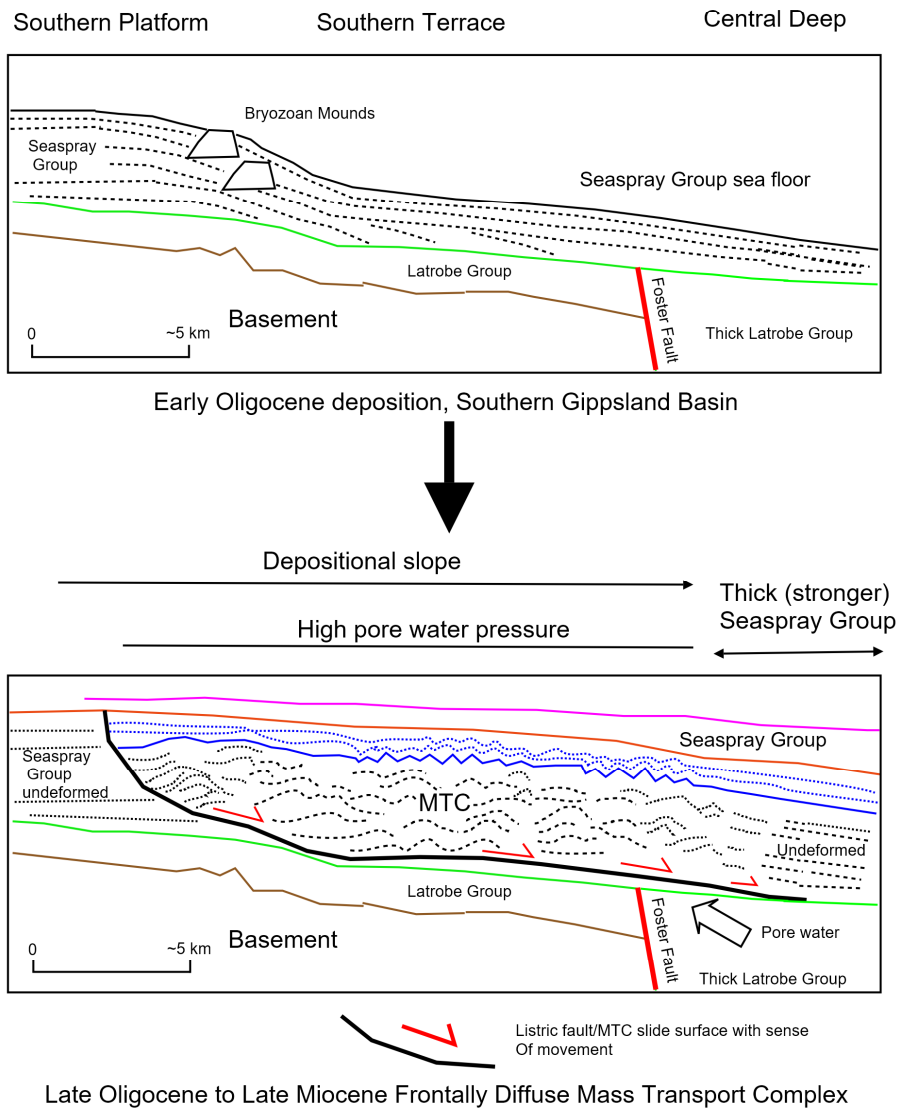
Received Date: 6 June 2017

Revised Date: 1 August 2018

Accepted Date: 23 August 2018

Please cite this article as: O'Brien, P.E., Mitchell, C.H., Nguyen, D., Langford, R.P., Mass Transport Complexes on a Cenozoic paleo-shelf edge, Gippsland basin, southeastern Australia, *Marine and Petroleum Geology* (2018), doi: 10.1016/j.marpetgeo.2018.08.029.

This is a PDF file of an unedited manuscript that has been accepted for publication. As a service to our customers we are providing this early version of the manuscript. The manuscript will undergo copyediting, typesetting, and review of the resulting proof before it is published in its final form. Please note that during the production process errors may be discovered which could affect the content, and all legal disclaimers that apply to the journal pertain.



Download English Version:

<https://daneshyari.com/en/article/11033103>

Download Persian Version:

<https://daneshyari.com/article/11033103>

[Daneshyari.com](https://daneshyari.com)