



## A simple, effective mixing chamber used in conjunction with a syringe pump for flow analysis

Natchanon Amornthammarong<sup>a,b</sup>, Peter B. Ortner<sup>a</sup>, Jia-Zhong Zhang<sup>b,\*</sup>

<sup>a</sup> Cooperative Institute for Marine and Atmospheric Studies (CIMAS), Rosenstiel School of Marine and Atmospheric Science, University of Miami, 4600 Rickenbacker Causeway, Miami, FL 33149, USA

<sup>b</sup> Ocean Chemistry Division, Atlantic Oceanographic & Meteorological Laboratory, National Oceanic & Atmospheric Administration (NOAA), 4301 Rickenbacker Causeway, Miami, FL 33149, USA

### ARTICLE INFO

#### Article history:

Received 12 January 2010

Received in revised form 18 February 2010

Accepted 19 February 2010

Available online 25 February 2010

#### Keywords:

Mixing chamber

Mixing coil

Mixing efficiency

Syringe pump

Flow analysis

### ABSTRACT

A simple, effective mixing chamber used in conjunction with a syringe pump for flow analysis is described and evaluated. A mixing chamber was constructed using a conventional 5 mL pipette tip and its performance compared with a widely used mixing coil. The results demonstrate that the mixing coil does not rapidly and completely mix solutions. Utilizing a configuration that reversed solution positions in the chamber with each mixing cycle, the proposed mixing chamber achieved complete mixing in a significantly shorter time than the mixing coil. The influence of injected sample volume on absorbance signals was evaluated by calculating an  $S_{1/2}$  value for the system. As tested with a minimal rinse, the system has no discernable carryover. Testing this new approach in our previously described silicate measurement system resulted in a more than twofold improvement in sensitivity.

Published by Elsevier B.V.

### 1. Introduction

The efficiency of fluid mixing is critical in many applications, especially those involving chemical or biological reactions. In flow analyses, fluid is transported by laminar flow inside a narrow-bore open tube where the velocities are too low to induce turbulence mixing [1]. Diffusive and convective mass transports are the main processes governing mixing [2], and this is a function of the distance of mixing liquid transport. It is enhanced by stretching and folding of interfaces which can be augmented in laminar flow regimes. That said, the diffusive mixing associated with laminar flow is often insufficient for mixing liquids [3]. Therefore, a number of techniques have been developed to improve mixing. These include: mixing chambers [4], mixing coils [5,6], knitted reactors [7], packed bed reactors [8], miniature stirrers [9], complex geometries [10], turbulent-like flows [11], special confluence connectors [12,13], floating solid particles or beads [14,15], using supercritical fluids [16], single bead string reactor [17], and time pulsing [18,19]. In all these techniques, mixing is easier to achieve in larger scale devices. Unfortunately many chemical and biological applications require using samples as small as possible. Since sample size is limited, it

is desirable to minimize the dimensions of the flow system used which inevitably leads to a highly laminar flow regime and raises concerns about mixing efficiency.

In some flow analysis systems, syringe pumps rather than peristaltic pumps are used to transport liquids through tubing and simultaneously mix the solutions. Approaches include sequential injection analysis (SIA) [20], lab-on-valve (LOV) [21], hybrid flow analyzer (HFA) [22], and multi-syringe flow [23]. In such systems mixing coils can be added to the flow path in order to improve mixing efficiency. In most situations the mixing achieved is not significantly different than in similarly arranged systems that use peristaltic pumps. In some cases, SIA and LOV in particular, it has proven difficult to attain the same levels of mixing efficiency. In an analytical system using a syringe pump the syringe itself can act as a primary mixing chamber but nonetheless an additional mixing coil is needed to enhance mixing [22,24,25]. The advantage of using the syringe as a mixing chamber is its larger cross-section therefore higher Reynolds number.

In this study we investigate the efficiency of using the syringe in the syringe pump as the primary mixing chamber with two different secondary mixing chambers: a conventional mixing coil and a standard 5-mL pipette tip. The characteristics of the system were studied by evaluating performance parameters such as repeatability,  $S_{1/2}$ , and carryover. We then tested both systems in a practical application, dissolved silicate measurement of fresh water samples.

\* Corresponding author. Tel.: +1 305 361 4512; fax: +1 305 361 4447.  
E-mail address: [jia-zhong.zhang@noaa.gov](mailto:jia-zhong.zhang@noaa.gov) (J.-Z. Zhang).

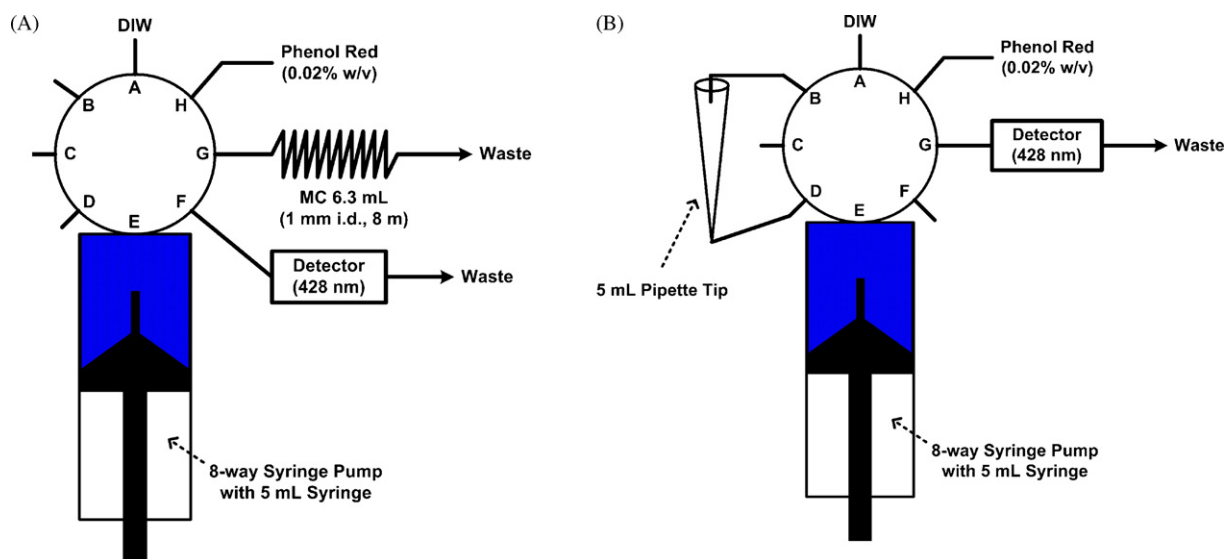


Fig. 1. Configuration of mixing systems with different secondary mixing chambers: (A) mixing coil and (b) pipette tip. DIW, deionized water.

## 2. Experimental

### 2.1. Comparison of mixing efficiency of two secondary mixing devices: mixing coil and pipette tip

Fig. 1(A) and (B) shows the configurations of two systems, one using the mixing coil and the other a pipette tip. The efficiencies of the two systems were compared with respect to mixing 0.6 mL of dye solution (0.02% Phenol Red indicator solution, VWR Scientific Products, PA) with 4.4 mL of deionized water DIW.

In both systems a syringe pump (P/N 54022, Kloehn, NV) is used to pull 4.4 mL of DIW into the 5-mL syringe in the syringe pump. 0.6 mL of a Phenol Red solution is then pulled into the syringe. The syringe serves as the primary mixing chamber. To use the mixing coil as a secondary mixing chamber, the mixture in the syringe is pushed into the mixing coil (1 mm i.d., 8 m long Teflon tubing), and then pulled back into the syringe. This constitutes one cycle of mixing. When the 5 mL pipette tip is used as the mixing chamber, one channel of the selection valve of the syringe pump is connected to the top and another to the bottom of the pipette tip (see Figs. 1 and 2). The mixture in the syringe is then pushed to the top of the pipette tip and fills the chamber. It is then pulled back into the syringe via the bottom of the pipette tip. This constitutes one cycle of mixing. The efficiency of the two mixing systems was compared by measuring the number of cycles required to completely mix the solution. In both systems the mixing chambers and detector were cleaned with deionized water 2–3 times after recording each peak signal in order to bring the signal back to baseline levels. A photograph of the mixing chamber with syringe pump system is shown in Fig. 2. It should be noted that the syringe pump used in this work is different from the traditional syringe pumps previously used in sequential injection analysis (SIA). In this syringe pump, a zero dead volume syringe is achieved by a special design piston (see the pointed tips in Figs. 1, 2 and 4). To use it in a SIA technique, a minor modification is necessary (the addition of a holding coil between the distribution valve and the syringe) because, in the syringe pump supplied by the manufacturer, the syringe is directly connected to an 8-way distribution valve.

### 2.2. Comparing the mixing devices in a silicate measurement system

We adapted our recently described a liquid waveguide-based silicate measurement system [24] to use a 5-mL pipette tip instead

of a mixing coil as a secondary mixing chamber (see Fig. 3). All reagents were prepared as previously described. The fluidic system consisted of one syringe pump SP equipped with an 8-way distribution valve SV (P/N 17620) and an injection valve IV (6-port medium pressure, Upchurch Scientific, WA). The syringe pump was equipped with a 5-mL capacity zero dead volume syringe (P/N 24691). The injection valve was equipped with a Teflon injection coil IC (0.78 mL, 1 mm i.d., 100 cm). As Fig. 3 indicates channel H of SV was connected to the top of the pipette tip, and channel F of SV was connected to the bottom of the pipette tip. The arrangement of the system with the mixing coil was as previously described [24].

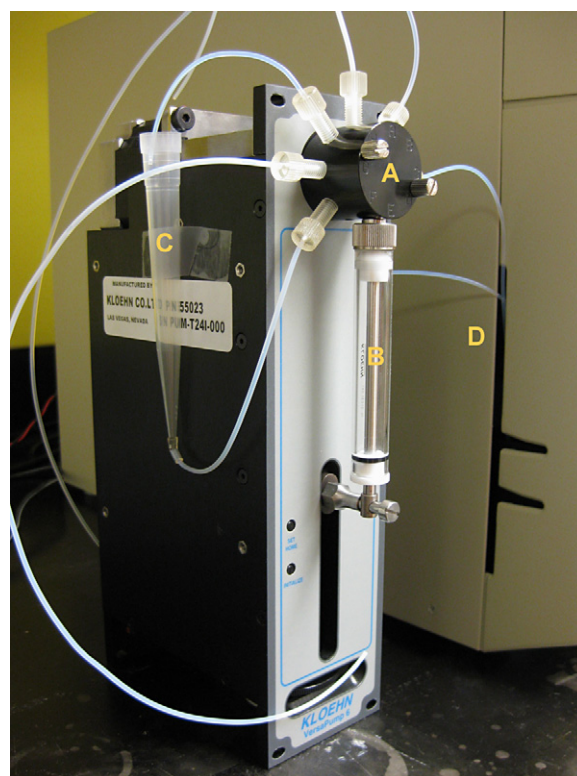


Fig. 2. Photograph of the experimental system: (A) 8-way distribution valve, (B) 5-mL glass syringe, (C) 5-mL pipette tip, and (D) spectrophotometer.

Download English Version:

<https://daneshyari.com/en/article/1242656>

Download Persian Version:

<https://daneshyari.com/article/1242656>

[Daneshyari.com](https://daneshyari.com)