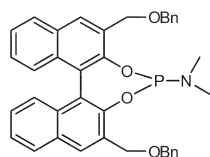


Stereochemistry abstracts

Wenxian Zhao *, Tao Wang, Ruijuan Zhao, Huanping Xie, Lantao Liu *

Tetrahedron: Asymmetry 27 (2016) 157



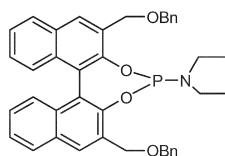
$C_{38}H_{34}NO_4P$

(*S*)-2,6-Bis((benzyloxy)methyl)-*N,N*-dimethyldinaphtho[2,1-*d*:1',2'-*f*][1,3,2]dioxaphosphepin-4-amine

$[\alpha]_D^{20} = +352$ (c 0.2, $CHCl_3$)
Source of chirality: (*S*)-BINOL
Absolute configuration: (*S*)

Wenxian Zhao *, Tao Wang, Ruijuan Zhao, Huanping Xie, Lantao Liu *

Tetrahedron: Asymmetry 27 (2016) 157



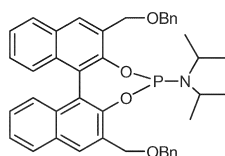
$C_{40}H_{38}NO_4P$

(*S*)-2,6-Bis((benzyloxy)methyl)-*N,N*-diethyldinaphtho[2,1-*d*:1',2'-*f*][1,3,2]dioxaphosphepin-4-amine

$[\alpha]_D^{20} = +363$ (c 0.2, $CHCl_3$)
Source of chirality: (*S*)-BINOL
Absolute configuration: (*S*)

Wenxian Zhao *, Tao Wang, Ruijuan Zhao, Huanping Xie, Lantao Liu *

Tetrahedron: Asymmetry 27 (2016) 157



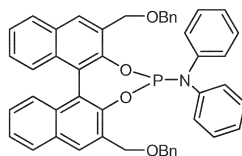
$C_{42}H_{42}NO_4P$

(*S*)-2,6-Bis((benzyloxy)methyl)-*N,N*-diisopropyldinaphtho[2,1-*d*:1',2'-*f*][1,3,2]dioxaphosphepin-4-amine

$[\alpha]_D^{20} = +356$ (c 0.1, $CHCl_3$)
Source of chirality: (*S*)-BINOL
Absolute configuration: (*S*)

Wenxian Zhao *, Tao Wang, Ruijuan Zhao, Huanping Xie, Lantao Liu *

Tetrahedron: Asymmetry 27 (2016) 157



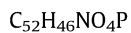
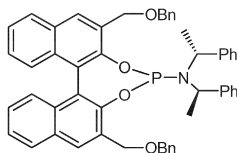
$C_{48}H_{38}NO_4P$

(*S*)-2,6-Bis((benzyloxy)methyl)-*N,N*-diphenyldinaphtho[2,1-*d*:1',2'-*f*][1,3,2]dioxaphosphepin-4-amine

$[\alpha]_D^{20} = +107$ (c 0.1, $CHCl_3$)
Source of chirality: (*S*)-BINOL
Absolute configuration: (*S*)

Wenxian Zhao *, Tao Wang, Ruijuan Zhao, Huanping Xie, Lantao Liu *

Tetrahedron: Asymmetry 27 (2016) 157

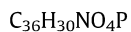
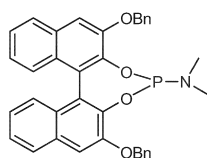


(S)-2,6-Bis((benzyloxy)methyl)-N,N-bis((R)-1-phenylethyl)dinaphtho[2,1-d:1',2'-f][1,3,2]dioxaphosphepin-4-amine

$[\alpha]_D^{20} = +27.1$ (c 0.1, $CHCl_3$)
Source of chirality: (S)-BINOL
Absolute configuration: (S) (R)

Wenxian Zhao *, Tao Wang, Ruijuan Zhao, Huanping Xie, Lantao Liu *

Tetrahedron: Asymmetry 27 (2016) 157

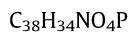
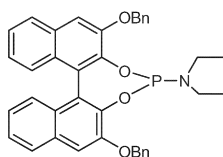


(S)-2,6-Bis(benzyloxy)-N,N-dimethyldinaphtho[2,1-d:1',2'-f][1,3,2]dioxaphosphepin-4-amine

$[\alpha]_D^{20} = +415$ (c 0.1, $CHCl_3$)
Source of chirality: (S)-BINOL
Absolute configuration: (S)

Wenxian Zhao *, Tao Wang, Ruijuan Zhao, Huanping Xie, Lantao Liu *

Tetrahedron: Asymmetry 27 (2016) 157

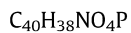
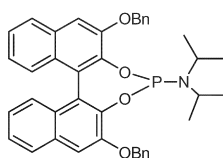


(S)-2,6-Bis(benzyloxy)-N,N-diethyldinaphtho[2,1-d:1',2'-f][1,3,2]dioxaphosphepin-4-amine

$[\alpha]_D^{20} = +366$ (c 0.1, $CHCl_3$)
Source of chirality: (S)-BINOL
Absolute configuration: (S)

Wenxian Zhao *, Tao Wang, Ruijuan Zhao, Huanping Xie, Lantao Liu *

Tetrahedron: Asymmetry 27 (2016) 157



(S)-2,6-Bis(benzyloxy)-N,N-diisopropyldinaphtho[2,1-d:1',2'-f][1,3,2]dioxaphosphepin-4-amine

$[\alpha]_D^{20} = +248$ (c 0.1, $CHCl_3$)
Source of chirality: (S)-BINOL
Absolute configuration: (S)

Download English Version:

<https://daneshyari.com/en/article/1343437>

Download Persian Version:

<https://daneshyari.com/article/1343437>

[Daneshyari.com](https://daneshyari.com)