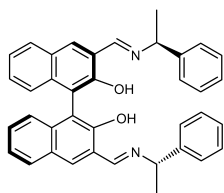


Stereochemistry abstracts

Cen Chen, Qingfei Huang, Sheng Zou, Lei Wang, Bao Luan, Jin Zhu, Qiwei Wang*, Lin Pu*

Tetrahedron: Asymmetry 25 (2014) 199



$C_{38}H_{32}N_2O_2$

3,3'-Bis[(((S)-1-phenylethyl)imino)methyl]-(R)-[1,1'-binaphthalene]-2,2'-diol

De >99% (NMR)

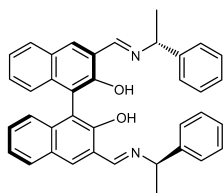
$[\alpha]_D^{20} = +168.3$ (c 1.0, $CHCl_3$)

Source of chirality: (R)-1,1'-bi-2-naphthol and (S)-1-phenylethylamine

Absolute configuration: (R,S,S)

Cen Chen, Qingfei Huang, Sheng Zou, Lei Wang, Bao Luan, Jin Zhu, Qiwei Wang*, Lin Pu*

Tetrahedron: Asymmetry 25 (2014) 199



$C_{38}H_{32}N_2O_2$

3,3'-Bis[(((R)-1-phenylethyl)imino)methyl]-(R)-[1,1'-binaphthalene]-2,2'-diol

De >99% (NMR)

$[\alpha]_D^{20} = -20$ (c 1.0, $CHCl_3$)

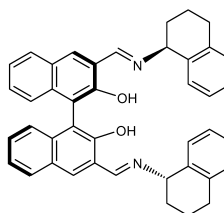
Source of chirality:

(R)-1,1'-bi-2-naphthol and (R)-1-phenylethylamine

Absolute configuration: (R,R,R)

Cen Chen, Qingfei Huang, Sheng Zou, Lei Wang, Bao Luan, Jin Zhu, Qiwei Wang*, Lin Pu*

Tetrahedron: Asymmetry 25 (2014) 199



$C_{42}H_{36}N_2O_2$

3,3'-Bis[(((S)-1,2,3,4-tetrahydronaphthalen-1-yl)imino)methyl]-(R)-[1,1'-binaphthalene]-2,2'-diol

De >99% (NMR)

$[\alpha]_D^{20} = +36.6$ (c 1.0, $CHCl_3$)

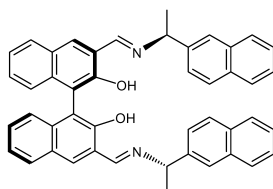
Source of chirality:

(R)-1,1'-bi-2-naphthol and (S)-1,2,3,4-tetrahydronaphthalen-1-yl amine

Absolute configuration: (R,S,S)

Cen Chen, Qingfei Huang, Sheng Zou, Lei Wang, Bao Luan, Jin Zhu, Qiwei Wang*, Lin Pu*

Tetrahedron: Asymmetry 25 (2014) 199



$C_{46}H_{36}N_2O_2$

3,3'-Bis[(((S)-1-(naphthalen-2-yl)ethyl)imino)methyl]-(R)-[1,1'-binaphthalene]-2,2'-diol

De >99% (NMR)

$[\alpha]_D^{20} = +328.4$ (c 1.0, $CHCl_3$)

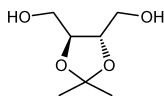
Source of chirality: (R)-1,1'-bi-2-naphthol and

(S)-1-(naphthalen-2-yl)ethyl amine

Absolute configuration: (R,S,S)

K. Vamshikrishna, G. Srinu, P. Srihari *

Tetrahedron: Asymmetry 25 (2014) 203

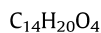
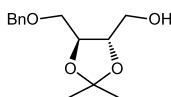


((4S,5S)-2,2-Dimethyl-1,3-dioxolane-4,5-diyl)dimethanol

$[\alpha]_D^{25} = +10.8$ (c 0.5, $CHCl_3$)
Source of chirality: (+)-Diethyltartrate
Absolute configuration: (4S,5S)

K. Vamshikrishna, G. Srinu, P. Srihari *

Tetrahedron: Asymmetry 25 (2014) 203

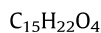
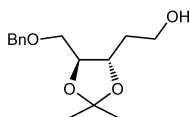


((4S,5S)-5-((Benzyloxy)methyl)-2,2-dimethyl-1,3-dioxolan-4-yl)methanol

$[\alpha]_D^{25} = +8.3$ (c 1.0, $CHCl_3$)
Source of chirality: (+)-Diethyltartrate
Absolute configuration: (4S,5S)

K. Vamshikrishna, G. Srinu, P. Srihari *

Tetrahedron: Asymmetry 25 (2014) 203

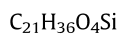
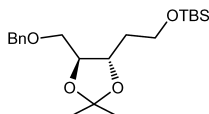


2-((4S,5S)-5-((Benzyloxy)methyl)-2,2-dimethyl-1,3-dioxolan-4-yl)ethanol

$[\alpha]_D^{25} = -7.9$ (c 1.7, $CHCl_3$)
Source of chirality: (+)-Diethyltartrate
Absolute configuration: (4S,5S)

K. Vamshikrishna, G. Srinu, P. Srihari *

Tetrahedron: Asymmetry 25 (2014) 203



(2-((4S,5S)-5-((Benzyloxy)methyl)-2,2-dimethyl-1,3-dioxolan-4-yl)ethoxy)(*tert*-butyl)dimethylsilane

$[\alpha]_D^{25} = -16.5$ (c 1.0, $CHCl_3$)
Source of chirality: (+)-Diethyltartrate
Absolute configuration: (4S,5S)

Download English Version:

<https://daneshyari.com/en/article/1343897>

Download Persian Version:

<https://daneshyari.com/article/1343897>

[Daneshyari.com](https://daneshyari.com)