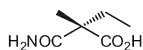


Stereochemistry abstracts

Masutoshi Nojiri *, Fumi Yoshida, Yoshinori Hirai, Akira Nishiyama, Yoshihiko Yasohara

Tetrahedron: Asymmetry 26 (2015) 1



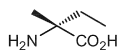
$C_6H_{11}NO_3$

(*S*)-2-Ethyl-2-methyl-malonamic acid

Ee = 98.6%
 $[\alpha]_D^{25} = +9.0$ (c 0.1, MeOH)
 Absolute configuration: (*S*)

Masutoshi Nojiri *, Fumi Yoshida, Yoshinori Hirai, Akira Nishiyama, Yoshihiko Yasohara

Tetrahedron: Asymmetry 26 (2015) 1



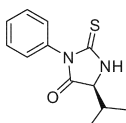
$C_5H_{11}NO_2$

(*R*)-Isovaline

Ee = 99.1%
 $[\alpha]_D^{25} = -8.2$ (c 1.0, H₂O).
 Absolute configuration: (*R*)

Liang Zhu, Cuifen Lu, Zuxing Chen, Guichun Yang, Yan Li, Junqi Nie *

Tetrahedron: Asymmetry 26 (2015) 6



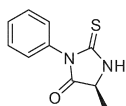
$C_{12}H_{14}N_2OS$

(*S*)-5-Isopropyl-3-phenyl-2-thioxoimidazolidin-4-one

$[\alpha]_D^{20} = -53.9$ (c 1.00, CHCl₃)
 Absolute configuration: (*S*)
 Source of chirality: L-valine

Liang Zhu, Cuifen Lu, Zuxing Chen, Guichun Yang, Yan Li, Junqi Nie *

Tetrahedron: Asymmetry 26 (2015) 6



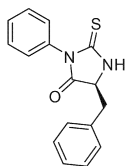
$C_{10}H_{10}N_2OS$

(*S*)-5-Methyl-3-phenyl-2-thioxoimidazolidin-4-one

$[\alpha]_D^{20} = -22.8$ (c 1.00, CH₂Cl₂)
 Absolute configuration: (*S*)
 Source of chirality: L-alanine

Liang Zhu, Cuifen Lu, Zuxing Chen, Guichun Yang, Yan Li, Junqi Nie *

Tetrahedron: Asymmetry 26 (2015) 6



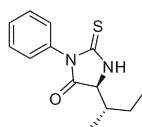
C₁₆H₁₄N₂OS

(S)-5-Benzyl-3-phenyl-2-thioxoimidazolidin-4-one

$[\alpha]_D^{20} = -245.8$ (c 0.16, CH₂Cl₂)
Absolute configuration: (S)
Source of chirality: L-phenylalanine

Liang Zhu, Cuifen Lu, Zuxing Chen, Guichun Yang, Yan Li, Junqi Nie *

Tetrahedron: Asymmetry 26 (2015) 6



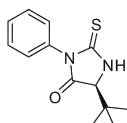
C₁₃H₁₆N₂OS

(S)-5-((S)-sec-Butyl)-3-phenyl-2-thioxoimidazolidin-4-one

$[\alpha]_D^{20} = -47.0$ (c 0.14, CH₂Cl₂)
Absolute configuration: (5S,1'S)
Source of chirality: L-isoleucine

Liang Zhu, Cuifen Lu, Zuxing Chen, Guichun Yang, Yan Li, Junqi Nie *

Tetrahedron: Asymmetry 26 (2015) 6



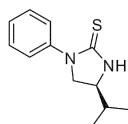
C₁₃H₁₆N₂OS

(S)-5-(tert-Butyl)-3-phenyl-2-thioxoimidazolidin-4-one

$[\alpha]_D^{20} = -390.5$ (c 0.14, CH₂Cl₂)
Absolute configuration: (S)
Source of chirality: L-tertiary leucine

Liang Zhu, Cuifen Lu, Zuxing Chen, Guichun Yang, Yan Li, Junqi Nie *

Tetrahedron: Asymmetry 26 (2015) 6



C₁₂H₁₆N₂S

(S)-4-Isopropyl-1-phenylimidazolidin-2-thione

$[\alpha]_D^{20} = -36.1$ (c 1.00, CH₂Cl₂)
Absolute configuration: (S)
Source of chirality: 3-phenyl-2-thioxoimidazolidin-4-one

Download English Version:

<https://daneshyari.com/en/article/1344997>

Download Persian Version:

<https://daneshyari.com/article/1344997>

[Daneshyari.com](https://daneshyari.com)