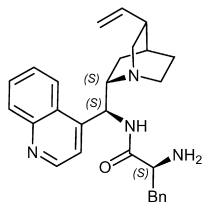


Stereochemistry abstracts

Pedro Barrulas, Maurizio Benaglia, Anthony J. Burke*

Tetrahedron: Asymmetry 25 (2014) 923



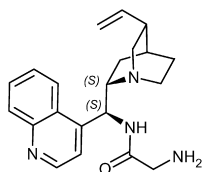
$C_{28}H_{32}N_4O$

(8*S*,9*S*, α *S*)-9-*L*-Phenylalanylamine(9-deoxy)-*epi*-cinchonidine

$[\alpha]_D^{28} = +2.1$ (c 1.05, MeOH)
Source of chirality: chiral pool
Absolute configuration: (8*S*,9*S*, α *S*)

Pedro Barrulas, Maurizio Benaglia, Anthony J. Burke*

Tetrahedron: Asymmetry 25 (2014) 923



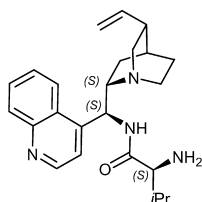
$C_{21}H_{26}N_4O$

(8*S*,9*S*)-9-Glycinylnamine(9-deoxy)-*epi*-cinchonidine

$[\alpha]_D^{28} = +15.9$ (c 1.04, MeOH)
Source of chirality: chiral pool
Absolute configuration: (8*S*,9*S*)

Pedro Barrulas, Maurizio Benaglia, Anthony J. Burke*

Tetrahedron: Asymmetry 25 (2014) 923



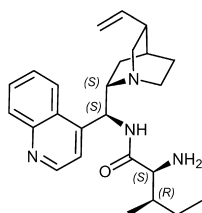
$C_{24}H_{32}N_4O$

(8*S*,9*S*, α *S*)-9-*L*-Valinylnamine(9-deoxy)-*epi*-cinchonidine

$[\alpha]_D^{27} = +13.7$ (c 1.36, MeOH)
Source of chirality: chiral pool
Absolute configuration: (8*S*,9*S*, α *S*)

Pedro Barrulas, Maurizio Benaglia, Anthony J. Burke*

Tetrahedron: Asymmetry 25 (2014) 923



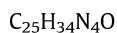
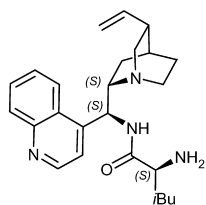
$C_{25}H_{34}N_4O$

(8*S*,9*S*, α *S*, β *R*)-9-*L*-Isoleucinylnamine(9-deoxy)-*epi*-cinchonidine

$[\alpha]_D^{25} = +17.8$ (c 1.11, MeOH)
Source of chirality: chiral pool
Absolute configuration: (8*S*,9*S*, α *S*, β *R*)

Pedro Barrulas, Maurizio Benaglia, Anthony J. Burke *

Tetrahedron: Asymmetry 25 (2014) 923

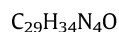
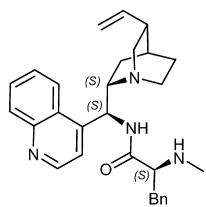


(8S,9S,αS)-9-L-Leucinylamide(9-deoxy)-*epi*-cinchonidine

$[\alpha]_D^{25} = +12.4$ (c 1.16, MeOH)
Source of chirality: chiral pool
Absolute configuration: (8S,9S,αS)

Pedro Barrulas, Maurizio Benaglia, Anthony J. Burke *

Tetrahedron: Asymmetry 25 (2014) 923

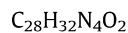
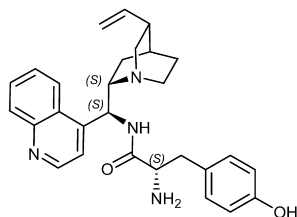


(8S,9S,αS)-9-(N-Methyl)-L-phenylalaninylamide(9-deoxy)-*epi*-cinchonidine

$[\alpha]_D^{24} = +17.4$ (c 1.03, MeOH)
Source of chirality: chiral pool
Absolute configuration: (8S,9S,αS)

Pedro Barrulas, Maurizio Benaglia, Anthony J. Burke *

Tetrahedron: Asymmetry 25 (2014) 923

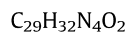
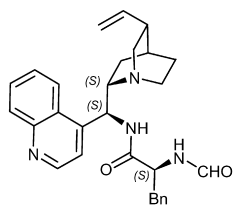


(8S,9S,αS)-9-L-Tyrosinylamide(9-deoxy)-*epi*-cinchonidine

$[\alpha]_D^{24} = -0.7$ (c 0.92, MeOH)
Source of chirality: chiral pool
Absolute configuration: (8S,9S,αS)

Pedro Barrulas, Maurizio Benaglia, Anthony J. Burke *

Tetrahedron: Asymmetry 25 (2014) 923



(8S,9S,αS)-9-(N-Formyl)-L-phenylalanylamide(9-deoxy)-*epi*-cinchonidine

$[\alpha]_D^{24} = -16.1$ (c 1.28, MeOH)
Source of chirality: chiral pool
Absolute configuration: (8S,9S,αS)

Download English Version:

<https://daneshyari.com/en/article/1345622>

Download Persian Version:

<https://daneshyari.com/article/1345622>

[Daneshyari.com](https://daneshyari.com)