



Phenylpropanoids from *Paspalum atratum* (Poaceae)



Luciano da Silva Pinto^a, Francisco Humberto Dübbern de Souza^b,
Isabele Rodrigues Nascimento^a, Lucia Maria Xavier Lopes^{a,*}

^a Institute of Chemistry, São Paulo State University, UNESP, 14801-970, Araraquara, SP, Brazil

^b Embrapa Cattle – Southeast, CP 339, 13560-970, São Carlos, SP, Brazil

ARTICLE INFO

Article history:

Received 25 June 2015

Received in revised form 14 September 2015

Accepted 26 September 2015

Available online 8 October 2015

Keywords:

Paspalum atratum

Poaceae

Poales

Phenylpropanoids

Rosmarinic acid

Chlorogenic acids

1. Subject and source

Paspalum L. (Poaceae) is a genus of grasses comprising ca. 400 species distributed mainly in tropical to warm-temperate areas worldwide, of which nearly 220 species occur naturally in Brazil. *Paspalum* is recognized for its ecological and agronomic importance, derived from its forage and ornamental attributes and constitutes a taxonomically complex group of plants (Cidade et al., 2010, 2013). *Paspalum atratum* Swallen is a perennial, apomitic, cespitose grass native to Central and South America. *P. atratum* cv. Pojuca was released in 2000 for commercial use in Brazil and, under other cultivar names, in several other countries as well. It is well adapted to wetlands and low fertility soils, and presents good forage and seed production potentials. In addition, this species is rarely attacked by pests and tolerates fire (Ramos et al., 2002).

Mature leaves and leaf sheaths of *Paspalum atratum* Swallen cv. Pojuca (Poaceae) were collected in Embrapa Cattle – Southeast (São Carlos, SP, Brazil) and identified by Dr. F. H. D. de Souza. Accessions of this species have been maintained *in vivo* at a bank (Brazilian Register Code BRA 009610) of Embrapa Cattle–Southeast, located in São Carlos, SP, Brazil.

2. Previous work

No previous report is available on the chemical composition of *P. atratum*.

* Corresponding author.

E-mail addresses: lucianosilva58@gmail.com (L. da Silva Pinto), francisco.dubbern-souza@embrapa.br (F.H.D. de Souza), isabnasc@iq.unesp.br (I.R. Nascimento), lopesxl@iq.unesp.br (L.M.X. Lopes).

3. Present study

The material was separated into roots and aerial parts, dried (ca. 45 °C) and ground. The aerial parts (443.0 g) were extracted successively at room temperature with *n*-hexane (3 × 600 mL) and EtOH (3 × 600 mL), and the extracts were individually concentrated to give Hex extract (3.0 g) and EtOH extract (10.1 g), respectively. The crude EtOH extract (10.0 g) was washed with CHCl₃ and the insoluble part (3.0 g) was subjected to column chromatography (C18, H₂O/MeOH gradient, 19:1–100% MeOH) to give 10 fractions (Fr.1–10). Fr.4 gave compound **1** (329.4 mg). Fr.2 was subjected to HPLC (C18, MeOH–H₂O 4:21, with 0.5% AcOH) to give compounds **2** + **8** (8.3 mg), **3** + **4** (4.1 mg), **5** (17.3 mg), **6** (4.8 mg), and **7** (4.3 mg).

The structures of the compounds **1–8** (Fig. 1) were elucidated based on analyses of their MS, ¹H and ¹³C NMR (including COSY, TOCSY, HMBC, and HSQC) and on comparisons of their data with those reported in the literature. Fraction 2 (**2** + **8**) were also analysed by DOSY NMR. These compounds were identified as (*R*)-rosmarinic acid (**1**) (Moharram et al., 2012; Murata et al., 2009), 3-*O*-caffeoylquinic acid (**2**, neochlorogenic acid) (Nakatani et al., 2000; Wei et al., 2010), 5-*O*-caffeoylquinic acid (**5**, chlorogenic acid) (Dahmani-Hamzaoui et al., 2012; Wei et al., 2010), 4-*O*-caffeoylquinic acid (**6**, cryptochlorogenic acid) (Nakatani et al., 2000; Wei et al., 2010), caffeic acid (**7**) (Xu et al., 2013), and phenylalanine (**8**) (Wang et al., 2012; Yasukawa and Asano, 2012).

Although 3-*O*-coumaroylquinic acids (**3** and **4**) have been known for some time, and have even been identified, for example, from species belonging to Rubiaceae, Asteraceae, Poaceae, and Solanaceae families, most of spectroscopic data of **3** and **4** still remain to be described. These compounds were isolated as a mixture of *cis* and *trans*-3-*O*-coumaroylquinic acids (2:3), as determined by the integral of the ¹H NMR signals at δ 5.9–6.1, 6.4–6.5, 7.0–7.1, and 7.7–7.8 referent to the olefinic hydrogens and peak areas of chromatogram obtained by HPLC-DAD. The *cis* isomer showed a coupling constant of 12.3 Hz, whereas the *trans* showed characteristic coupling constant of 16.0 Hz. The UV absorption suggested the presence of *p*-coumaroyl moiety (λ_{max} at 312 nm). A detailed analysis of ¹H–¹H gCOSY, TOCSY, gHMQC, and gHMBC data of these compounds enabled us to assign their chemical shifts to carbons and hydrogens in the structures and helped to determine their relative configurations. Moreover, the chemical shifts of one quaternary (δ_C ~77) and three methine (δ_C 66.9, 72.9 and 73.4) oxygenated carbons and two methylene carbons (δ_C 35.6 and 40.6) were in accordance with a 3-substituted quinic acid unity (Wei et al., 2010). In addition, the coupling constants (*J*) values determined for the hydrogens of this unity were confirmed by selective proton irradiation, being its relative configuration identical to that determined for **2**.

cis-3-*O*-Coumaroylquinic acid (**3**). ¹H NMR (600 MHz, D₂O): δ 1.93–2.13 (2H, *m*, 2H-6), 2.18–2.25 (2H, *m*, 2H-2), 3.71–3.78 (1H, *m*, H-4), 4.08 (1H, *dt*, *J* = 4.2, 10.1 Hz, H-5), 5.35 (1H, *bd*, *J* = 2.8 Hz, H-3), 6.00 (1H, *d*, *J* = 12.3 Hz, H-8'), 6.90 (2H, *d*, *J* = 8.3 Hz, H-3', 5'), 7.08 (1H, *d*, *J* = 12.3 Hz, H-7'), 7.52 (2H, *d*, *J* = 8.3 Hz, H-2', 6'). ¹³C NMR (151 MHz, D₂O): δ 35.6 (C-2), 40.6

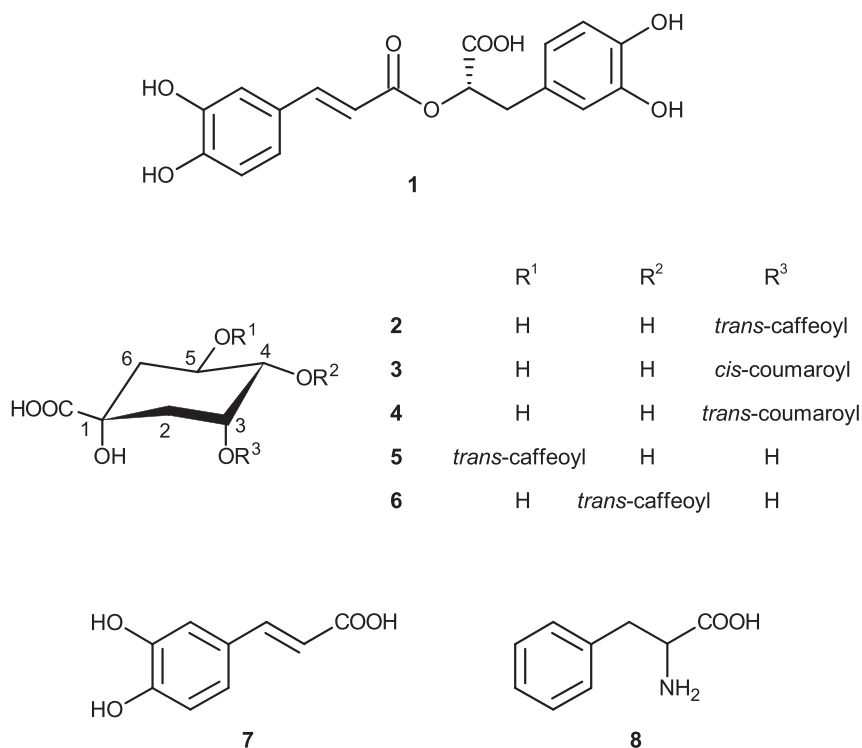


Fig. 1. Structures of compounds **1–8**.

Download English Version:

<https://daneshyari.com/en/article/1355183>

Download Persian Version:

<https://daneshyari.com/article/1355183>

[Daneshyari.com](https://daneshyari.com)