



Development of a plasma panel muon detector

D.S. Levin^{a,*}, R. Ball^a, J.R. Beene^b, Y. Benhammou^c, J.W. Chapman^a, T. Dai^a, E. Etzion^c, P.S. Friedman^d, M. Ben Moshe^c, Y. Silver^c, R.L. Varner Jr.^b, C. Weaverdyck^a, S. White^e, B. Zhou^a

^a University of Michigan, Department of Physics, Ann Arbor, MI, USA

^b Oak Ridge National Laboratory, Oak Ridge, TN, USA

^c Tel Aviv University, Beverly and Raymond Sackler School of Physics and Astronomy, Tel Aviv, Israel

^d Integrated Sensors, LLC, Toledo, OH, USA

^e Brookhaven National Laboratory, Upton, NY, USA

ARTICLE INFO

Available online 8 August 2010

Keywords:

Gaseous
Micro-pattern
Radiation
Detectors
Muon

ABSTRACT

A radiation detector technology based on plasma display panels (PDPs), the underlying engine of panel plasma television displays, is being investigated. Emerging from this well-established television technology is the Plasma Panel Sensor (PPS), a novel variant of the micro-pattern radiation detector. The PPS is fundamentally a fast, high-resolution detector comprised of an array of plasma discharge cells, operating in a hermetically sealed gas mixture. We report on the PPS development effort, including proof-of-principle results of laboratory signal observations.

© 2010 Elsevier B.V. All rights reserved.

0. Introduction

The detector performance requirements for high and super-high ($10^{34-35} \text{ cm}^{-2} \text{ s}^{-1}$) luminosities at the LHC and future facilities such as the International Linear Collider have motivated our investigations into a muon detector technology based on plasma display panels (PDPs). PDPs are the principal component of flat panel plasma television displays. Their design and production are supported by an industrial infrastructure with four decades of development. As televisions and displays, plasma panels have proven reliability, durability, very long lifetimes coupled with low costs with applications in both commercial and military sectors. Our objective is to develop from the PDP technology a novel micro-pattern radiation detector—herein referred to as Plasma Panel Sensors (PPSs) the fundamental concept of which was initially introduced earlier [1–4]. The PPS is intended to benefit from many of the key attributes of plasma panels.

The potential performance attributes, materials, fabrication techniques and some critical issues of the PPS are described in a recent paper [5]. This technology offers the potential of high gains, fast response times, a commensurate high data rate capability and extremely low power consumption. The RMS spatial resolution will be determined (and limited) by the dimensions, pitch and the uniformity of electrodes on the display glass substrate. Current manufacturing capability allows for electrodes with as little as

1–2 μm non-uniformity, well below the order of 100 μm pixel sizes intended for muon detectors. Here we provide an overview of the PPS concept and report on initial laboratory test result of signal observations.

1. Plasma Panel Sensors detector overview

The PPS is based on the Plasma Panel Display (PDP), which comprises millions of cells per square meter, each of which can, when provided with a signal pulse, initiate and sustain a plasma discharge. As a plasma panel detector, a PDP cell can be biased to discharge when a free electron is generated or injected into the gas. Therefore the PPS, as a redesigned PDP, functions as a highly integrated array of parallel pixel-sensor elements or cells, each independently capable of detecting single free electrons generated within the cell, either by incident ionizing radiation or by photoelectrons emitted by a cathode. While our current effort is motivated by minimum ionizing particle (MIP) radiation detection, the PPS with an appropriate front end might also be configured as a photodetector. The initial results reported here in fact derive from both photon and beta particle radiation.

The basic element of PDPs consists of orthogonal arrays of electrodes deposited onto glass substrates, separated by a gas discharge gap. PDPs have been manufactured as DC and AC units. Televisions employ the latter while some limited use displays, as with PPS units, use a DC mode. Fig. 1 illustrates the basic features of an AC-type PDP assembly. The pixel or cell contains a phosphor-coated wall structure enclosing a plasma discharge cell.

* Corresponding author.

E-mail address: dslevin@umich.edu (D.S. Levin).

The cells are quite small, on the order of $200\ \mu\text{m}$ in each dimension for HDTV, although PDPs with cell dimensions on the order of $100\ \mu\text{m}$ have been made for military applications. Because of the small electrode gaps, large electric fields arise with only a few hundred volts of bias. At least three cells, each associated to a specific color (e.g. RGB), comprise a pixel. The plasma discharges are usually made in Penning mixtures of noble gases: typically Xe and Ne gas at about 500 Torr. It is important to note that the gas in a PDP is permanently and hermetically sealed in the panel's glass envelope. (The tests reported in this paper were conducted on a display panel that has been sealed for 7 years.) The discharge produces VUV photons that excite phosphors in the cells and produce the bright colors characteristic of plasma TV.

The PDP as a plasma panel detector is biased to discharge when a radiation-induced free electron is generated in the gas. Such electrons then undergo rapid electron multiplication, resulting in an avalanche and discharge that can be confined to

the local pixel cell space. For PDP products, this process is self-limiting and self-contained by various means, one of them being a localized impedance at each cell. The technique of using a localized quench resistor is similar to that used in Resistive Plate Chambers (RPCs). The total charge available to produce a signal is that stored by the cell's internal capacitance and determines a maximum gain. Since the cell is operated above the proportional mode [6], in essence it may be considered to be a micro-Geiger counter. The signal pulse will be independent of the number of initiating free electrons, rendering therefore the PPS as intrinsically digital. The gain may be sufficiently large to produce signals with amplitudes of volts, and obviate signal amplification electronics. Discharge confinement and localization is achieved by various methods, such as a pattern of dielectric material deposited over the bare metal electrodes to establish regions where discharges can occur. The conceptual design suggested here uses truncated electrodes of limited lengths.

1.1. Cell geometry

The cell geometry includes the dimensions of the electrodes, their pitch and vertical spacing, and dimensions of cell walls. For MIP detection the electrode layout should have a “vertical” drift region on the order of 2–3 mm and a transverse electric field avalanche region of 50–100 μm . The drift region is required to ensure sufficient probability that a passing particle will produce at least one ion pair. Due to the large gain, a single ion pair can initiate a signal, suggesting that a drift region of $\sim 3\ \text{mm}$ is sufficient to produce signals with very high efficiency [5].

1.2. Electrical characteristics

A conceptual representation of the cell configuration is shown in Ref. [5]. The cell is defined by a local electrode arrangement with an intrinsic capacitance and an embedded resistance in the high voltage feeds. The discharge gap is determined by the proximity of the two electrodes defining a capacitor, the high voltage (or discharge) side of each being fed by a resistance. The

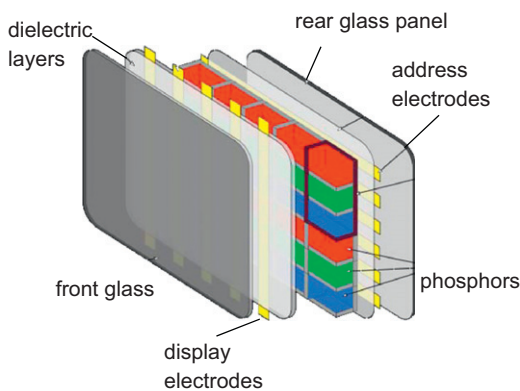


Fig. 1. Structure of an AC-type Plasma Display Panel, showing the basic elements. The plasma discharge region is defined by the front display electrodes. The gas mixture comprised of noble gases is hermetically sealed in the glass envelope. In a PPS device, phosphors, address electrodes and dielectric layers over the display electrode are absent.

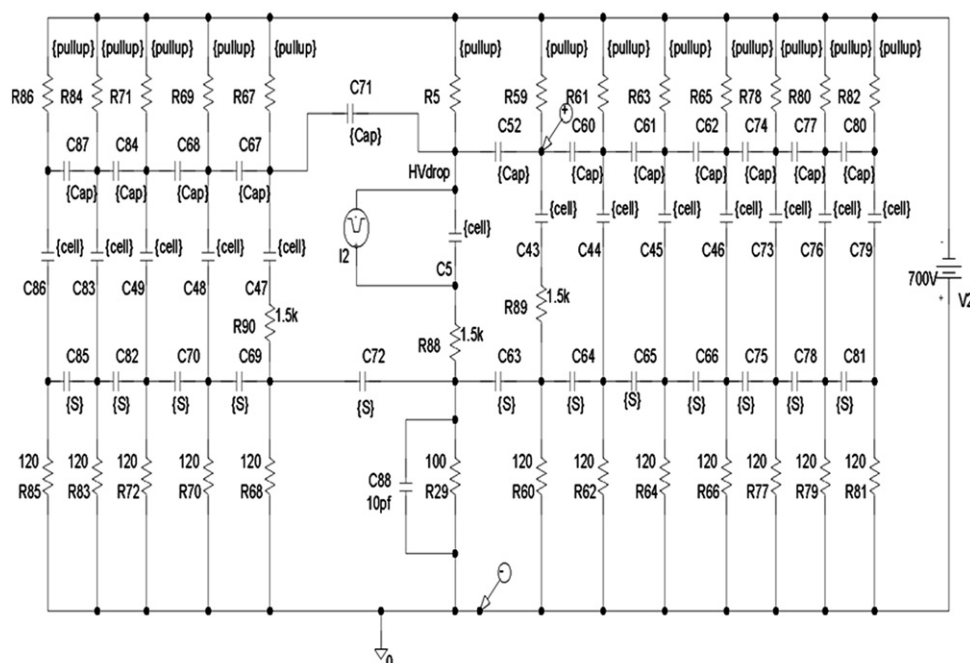


Fig. 2. Schematic of a pixel chain with discharge regions represented by capacitors isolated and quenched by embedded resistors.

Download English Version:

<https://daneshyari.com/en/article/1824676>

Download Persian Version:

<https://daneshyari.com/article/1824676>

[Daneshyari.com](https://daneshyari.com)