



# Development of doxorubicin loading platform based albumin-sporopollenin as drug carrier



Esra Maltas<sup>a,b,\*</sup>, İlkay Hilal Gubbuk<sup>a</sup>, Salih Yildiz<sup>a</sup>

<sup>a</sup> Department of Chemistry, Selcuk University, 42075 Konya, Turkey

<sup>b</sup> Department of Biochemistry, Selcuk University, 42075 Konya, Turkey

## ARTICLE INFO

### Article history:

Received 28 February 2016

Received in revised form

1 June 2016

Accepted 14 June 2016

Available online 16 June 2016

### Keywords:

Doxorubicin

Magnetic nanoparticles

Protein

Fluorescence spectroscopy

## ABSTRACT

Albumin is thought as an drug carrier for doxorubicin (DOX). The binding of doxorubicin to albumin was studied on the surface of sporopollenin (SP) to produce a new drug system based natural materials. Human serum albumin (HSA) was immobilized on SPIONs in 20 mM Tris buffer, 7.4 of pH. Data showed that binding amount of HSA has been found to be as 285.53  $\mu\text{g}$  to the 25 mg of Sporopollenin which also bounded 319.76  $\mu\text{M}$  of DOX. Binding of protein and drug to Sp were clarified by SEM, EDX and FT-IR analysis.

© 2016 Published by Elsevier B.V. This is an open access article under the CC BY-NC-ND license (<http://creativecommons.org/licenses/by-nc-nd/4.0/>).

## 1. Introduction

Drugs based on proteins, peptides and oligonucleotides tend to attract the greatest attention at present due to their potential to treat chronic diseases [1]. The research is centered on overcoming the main obstacle to the treatment of cancer by chemotherapy, i.e., the destruction of healthy tissue by the therapeutic agents [2]. Biocompatible polymeric based particles (BPs) as effective delivery carriers of drugs has received considerable attention in recent years because they possess the ability to deliver drugs to varied areas of the body for sustained periods of time [3–6]. Biological polymers with several properties such as good biological compatibility, nontoxicity and high hydrophilicity, comparing with synthetic organic materials when used as drug carriers [5–9]. Suitable modification and optimization of the form of the biological polymer has to be determined to properly target the selected polymer and its controlled release to the affected organs [10,11]. Naturally occurring polymers have garnered attention within the scope of obtaining carriers capable of releasing therapeutic molecules to affected sites binding the targeted disease in a living body [12,13].

Sporopollenin (Sp) represents a most promising biopolymer for such controlled delivery and targeting, due to factors such as its biocompatibility, low toxicity, and feasible biodegradability

connected with easy elimination of carrier metabolites from the body [14]. Sporopollenins, derived from the spores of *Lycopodium clavatum* (Sp), contain carbon, hydrogen and oxygen, and it has the stoichiometry C90H144O27. The diameter of a Sp is typically within the range of 5  $\mu\text{m}$  to 250  $\mu\text{m}$  and the material does not swell to any measurable extent in aqueous or organic solvents [15]. Spores which are roughly spherical in shape produced by nonseed bearing plants, for example ferns and mosses, as part of the process of reproduction [16]. The same size and decorations of Sp particles in a single species of plant makes possible to attach small molecules such as ligand and drugs to the outside of complete particles this morphology was regarded as being so applicable to drug delivery [17]. For drug delivery, different particles modified with protein have been widely reported [18] in particular, physical or chemical modification can improve the properties of particles in different ways. Nevertheless, there are some drawbacks related to their toxicity, biocompatibility and allergic affectivity. In drug delivery applications, naturally occurring Sp has been shown to be non toxic to human endothelial cells and free of allergenic protein epitopes which is crucial [19]. Because *Lycopodium clavatum* spores have a number of advantages over conventional materials they were chosen as a Np for the drug delivery used for this study.

Albumin is a versatile protein carrier biomaterial for much therapeutics in treating a variety of diseases including cancer, arthritis and diabetes and was considered an attractive drug carrier for hydrophobic drugs [20]. Human serum albumin (HSA) has a molecular weight of 66 kDa and highly soluble globular monomeric protein [21–23]. HSA is a multiple protein carrier for drug

\* Corresponding author at: Department of Biochemistry, Selcuk University, Campus, 42075 Konya, Turkey.

E-mail address: [maltasesra@gmail.com](mailto:maltasesra@gmail.com) (E. Maltas).

delivery with high stability. It has been shown to be nontoxic, biocompatible and biodegradable, so it can be preferentially taken up by tumors as a nutrition ingredient [24]. Studies have indicated that albumin based on particles have great potential in the smart delivery of therapeutic agents.

This study focused on the albumin immobilized Sporopollenin (Sp-HSA) for delivery of doxorubicin (DOX) to enhance target ability. DOX as an anti-tumor model drug was loaded to Sp-HSA. As expected, the prepared Sp-HSA system has shown high affinity for DOX.

## 2. Materials and methods

### 2.1. Materials and chemicals

Sodium hydroxide ( $\geq 97\%$ ), hydrochloric acid (37%), tris (hydroxymethyl)-aminomethane (99.8–100.1%), ammonium hydroxide (25% w/w) and sodium chloride were obtained from Merck (Germany). Sporopollenin was obtained from Fluka. Human serum albumin was obtained from Sigma (USA). Doxorubicin was provided from Sigma Aldrich. All aqueous solutions and buffers were prepared with deionized water via Millipore Milli-Q Plus water purification system.

### 2.2. Immobilization of albumin on sporopollenin

Sp was mixed with a concentration of  $1 \text{ mg mL}^{-1}$  of human serum albumin (HSA) in 20 mM Tris, pH 7.4 at a particle concentration range of 5–25  $\text{mg mL}^{-1}$  [14]. Then, the heterogeneous solution was mixed for 2 h at  $4^\circ\text{C}$ . Albumin immobilized sporopollenin was washed with Tris buffer for chemical analysis. Supernatant was scanned for determination of binding amount of albumin. The amount of immobilized protein was measured from regression equation of calibration curve of the protein ( $y = 404.81x + 501.65$ ,  $r: 0.99$ ) by using a Perkin-Elmer LS 55 Luminescence Spectrophotometer (Waltham, USA). The emission spectra were scanned at 280 and 342 nm of excitation and emission wavelengths [25].

### 2.3. DOX loading and releasing

1 mM of doxorubicin was dissolved in mL of 20 mM Tris-HCl buffer (pH 7.4) [26]. The DOX solution was added to the 5–25  $\text{mg}$  of protein immobilized sporopollenin in 20 mM Tris-HCl buffer (pH 7.4) in order to measure DOX loading. DOX release from Sp-HSA was studied via different buffer with a various pH at 60 rpm and  $37^\circ\text{C}$ . The release behaviors of DOX-loaded albumin particles under different pH (154 mM NaCl, pH:2.2; and 6; 20 mM Tris buffer, pH: 7.4) were evaluated. The excitation and emission wavelengths of the drug were also scanned at 480 nm and 560 nm by fluorescence spectroscopy, respectively. The excitation and emission slit width were both set to 10 nm. Loading amount of DOX to albumin-Sp and release of the DOX from albumin-Sp were calculated from calibration curve of DOX ( $y = 72, 282x + 125, 27$ ,  $r: 0.99$ ).

### 2.4. Instrumentation

FT-IR spectra were scanned on a Perkin Elmer spectrum 100 FTIR spectrometer (ATR). SEM images were obtained using a Zeiss LS-10 field emission SEM instrument equipped with an Inca Energy 350 X-Max (Oxford Instruments) spectrometer. Samples were sputter-coated with Au (60%) and Pd (40%) alloy using a Q150R (Quorum Technologies) instrument.

## 3. Results and discussions

### 3.1. Immobilization of albumin

A broad scale of materials such as chitosan, sporopollenin, magnetic nanoparticles and polymers by different functional groups have been widely used in drug delivery systems [27–34]. Our group has focus on development of drug carrier systems having proteins [26–34]. One of our previous studies has been on immobilization of hemoglobin onto sporopollenin which was showed to be high affinity to the protein, so it is possible to develop a new drug delivery system based on sporopollenin-protein [14]. Because, the use of protein in drug carrier systems was very effective on bioavailability and reduction of side effects of the drugs *in vivo* [32–34].

The standard albumin solution was mixed with different amount of sporopollenin particles. After binding of albumin to particles, supernatant from the heterogeneous system was removed and scanned with spectrofluorometer at 280 nm and 342 nm of excitation and emission wavelengths where exhibited intrinsic fluorescence of protein. The intrinsic fluorescence of protein comes from tryptophan and tyrosine residues in the albumin's structure [35–37]. The emission spectrum for albumin were shown in Fig. 1. The binding amount of the albumin was calculated via the regression equation at a particles amount range of 0.1 mg and 0.5 mg (Fig. 1). The binding amount of albumin was increased with increase in the particles amount. Data showed that  $285.53 \mu\text{g}$  of albumin was bounded to the 25 mg of Sp in Tris buffer (Fig. 2).

### 3.2. Releasing and loading of doxorubicin

DOX is a anticancer drug which exhibits maximum fluorescence intensity at 480 nm and 560 nm of excitation and emission

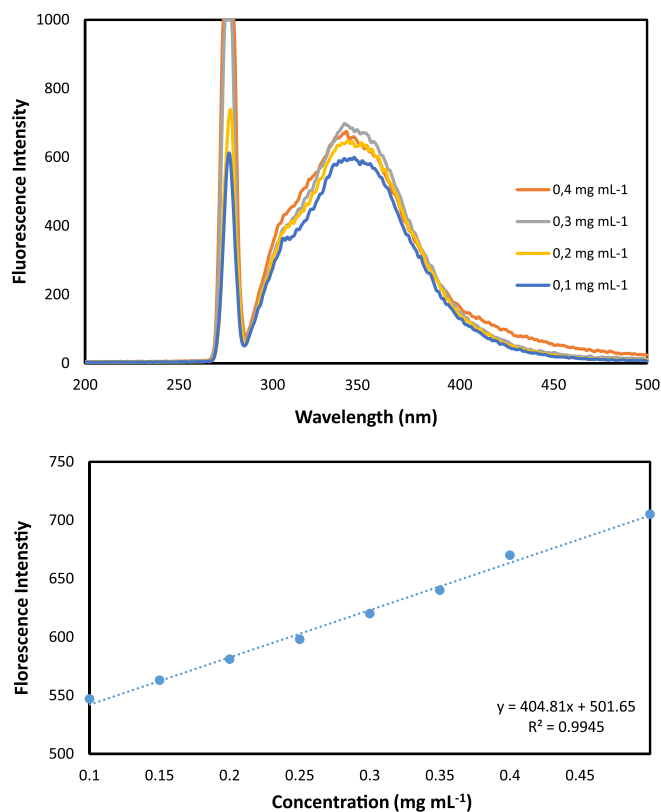


Fig. 1. Emission spectra and calibration curve of albumin from human serum at a concentration range of 0.1–0.5  $\text{mg mL}^{-1}$ .

Download English Version:

<https://daneshyari.com/en/article/1941621>

Download Persian Version:

<https://daneshyari.com/article/1941621>

[Daneshyari.com](https://daneshyari.com)