



King Saud University
Saudi Pharmaceutical Journal

www.ksu.edu.sa
www.sciencedirect.com



CASE REPORT

Toxic effect of Cadmium found in eyeliner to the eye of a 21 year old Saudi woman: A case report

Mohamed Al Amry^a, Fahad Al-Saikhan^{b,*}, Ayman Ayoubi^c

^a Anterior Segment Division, King Khaled Eye Specialist Hospital, Riyadh, Saudi Arabia

^b Department of Pharmacy Services, King Khaled Eye Specialist Hospital, Riyadh, Saudi Arabia

^c Oculoplastics and Orbit Division, King Khaled Eye Specialist Hospital, Riyadh, Saudi Arabia

Received 3 March 2011; accepted 10 May 2011

Available online 30 May 2011

KEYWORDS

Toxic effect;
Cadmium;
Eye;
Eyeliner;
Kohl

Abstract *Purpose:* To raise the issue of increased use of traditional medicine while the Tertiary care hospitals are available to provide the appropriate care for each clinical condition. Eyeliner (Kohl) is an Arabic word denoting a fine powder with a texture and appearance similar to mascara. It is usually worn on the lid margins or inside the conjunctival sac by Middle and Far Eastern and in East Africans populations for different purposes like beauty or religious and as a treatment for many eye diseases.

Summary: We report a case of a lady who put traditional locally prepared eyeliner in her eye that resulted in severe corneal edema and faint scarring. On toxicology analysis it was discovered to contain toxic levels of Cadmium (Cd) and Lead (Pb).

Conclusion: Cd is a heavy toxic metal like Pb but has never been reported as a component of eyeliners. The most likely possible cause of the corneal clinical picture in our case is due to the toxic effect of Cd found in the traditional eyeliner (Kohl) used in Saudi Arabia.

© 2011 King Saud University. Production and hosting by Elsevier B.V. All rights reserved.

* Corresponding author. Tel.: +966 14821234.

E-mail addresses: fsaikhan@kkesh.med.sa (F. Al-Saikhan), malamry@kkesh.med.sa (M.A. Amry), aayoubi@kkesh.med.sa (A. Ayoubi).

1319-0164 © 2011 King Saud University. Production and hosting by Elsevier B.V. All rights reserved.

Peer review under responsibility of King Saud University.
doi:10.1016/j.jsps.2011.05.002



Production and hosting by Elsevier

1. Introduction

Eyeliner (Kohl) is an Arabic word denoting a fine powder with a texture and appearance similar to mascara. It is usually worn on the lid margins or inside the conjunctival sac by Middle and Far Eastern and in East Africans populations for different purposes like beauty or religious and as a treatment for many eye diseases (Al-Hazzaa and Krahn, 1995).

Its main component is Galena (Lead sulphide) Mahmood et al., 2009 and in some preparations it contains herbs and some types of crystals (Erie et al., 2005).

Cadmium (Cd) is a heavy toxic metal like Lead (Pb) but has never been reported as a component of eyeliners.

We report a case of a lady who puts traditional locally prepared eyeliner in her eye that resulted in severe corneal edema and faint scarring. On toxicology analysis it was discovered to contain toxic levels of Cd and Pb.

We presume this is the first report of such toxic effect of Cd to the human being eye.

2. Case presentation

The 21 years old Saudi Arabian lady was referred to our hospital from a local hospital with a case of severe keratitis in her right eye after using a locally prepared eye liner (Kohl) prescribed by a local herbalist for her red eye 2 weeks prior to her referral. Kohl was provided by herbalist in commercial container without brand or composition details. Patient had put a large amount of the eyeliner inside the eye rather on the lid margins for about one week as per the advice of the herbalist. No history of ocular trauma, contact lens wear or systemic diseases was reported. On her examination in the emergency room she had visual acuity (VA) of counting fingers at 2 feet in the right eye (OD), and 20/20 in the left eye (OS). OS Intra-ocular pressure (IOP) was 17 millimeter mercury (mmHg). OD IOP was not recorded.

Slit lamp examination OD showed swollen eye lids, severe conjunctival congestion, small corneal infiltrate with overlying epithelial defect, anterior chamber was deep with no hypopion with no further details; fundus was flat. OS examination was within normal limits.

The working diagnosis was infectious keratitis OD for which corneal scraping was done and specimens sent for Gram and Giemsa staining plus culture and sensitivity testing. Patient was hospitalized and started on topical fortified Cephazoline 50 milligram/milliliter (mg/ml) and ceftazidime 50 mg/ml alternating every 4 h, and Erythromycin eye ointment at bed time plus cyclopentolate 1% drops three times/day.

Initial Gram and Giemsa staining results showed no organisms. On the following day she was evaluated by an anterior segment faculty member and labeled as mild keratitis with epithelial defect. The antibiotics frequency was reduced and was started on topical flouromethalone drops (FML) four times a day after 3 days of admission to the hospital. The results of culture were negative after 37 h and a dramatic improvement recorded over one week after which she was discharged on ofloxacin, FML and lubricating drops.

A week later patient presented to the emergency room complaining of severe ocular pain and tearing and found to have a corneal epithelial defect with no infiltrate, although she had a localized corneal edema with quiet anterior chamber (Fig. 1) the rest of the examination was unremarkable.

Her condition was diagnosed as toxic keratitis and she was requested to bring a sample of the material she had used as eyeliner (Fig. 2). For social reasons she was admitted to the hospital and the sample was sent to King Faisal Specialist Hospital and Research Center (KFSHRC) which is a tertiary center with national toxicology reference in Riyadh for further testing.

Patient was started on topical prednisolone acetates 1% drops (PREDFORTE), Sodium chloride drops 5% in addition to topical lubricating eye drops and ointment at bed time.

She improved symptomatically in regard to the ocular pain. The epithelial defect healed completely. The results of the

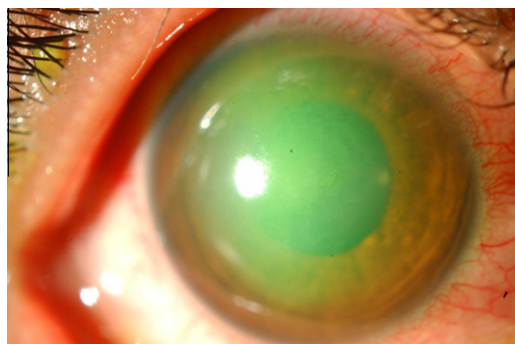


Figure 1 Biomicroscopy photo of right eye cornea at the initial presentation showing cloudy cornea.



Figure 2 Photo of the sample of the used eye liner (Kohl) showing the pink color on finger.

sample recorded an eye liner (Kohl) containing toxic levels of heavy metals (Pb: 307,562,348 parts per million (ppm) and Cd: 6259 ppm) and trace levels of Mercury and Thallium. The testing method used was gas chromatography/mass spectrometry (GC/MS). The herbalist lives outside city of Riyadh and due to social and legal constraints the female traditional herbalist was not contacted. The patient was informed about the nature of the used eyeliner and highly advised not to use it in future. The corneal endothelial cell count was low OD, 1361 (per square millimeter (mm^2)) (Fig. 3a), and normal OS 2943 mm^{-2} (Fig. 3b).

On last follow up, patient had 20/20 vision despite faint scarring with no corneal edema (Fig. 4).

3. Discussion

Kohl is traditional eyeliner used extensively in the Middle East, Far East and Africa for different reasons since antiquity, of these, is religious, cosmetic and medical reasons like improving the vision and curing different eye diseases. It is derived from Arabic world Kohl (Al-Hazzaa and Krahn, 1995; Mahmood et al., 2009). The popular usage is in protecting the eye from the strong sun rays in the Arab peninsula among the Arab Bedouins (Al-Hazzaa and Krahn, 1995). Usually, it is applied on the lid margins for beauty purposes but can also be put in the conjunctiva to treat different ocular diseases like trachoma, blephritis and red eye (Al-Hazzaa and Krahn, 1995; Mahmood et al., 2009). Our patient wore this Kohl on the

Download English Version:

<https://daneshyari.com/en/article/2509586>

Download Persian Version:

<https://daneshyari.com/article/2509586>

[Daneshyari.com](https://daneshyari.com)